

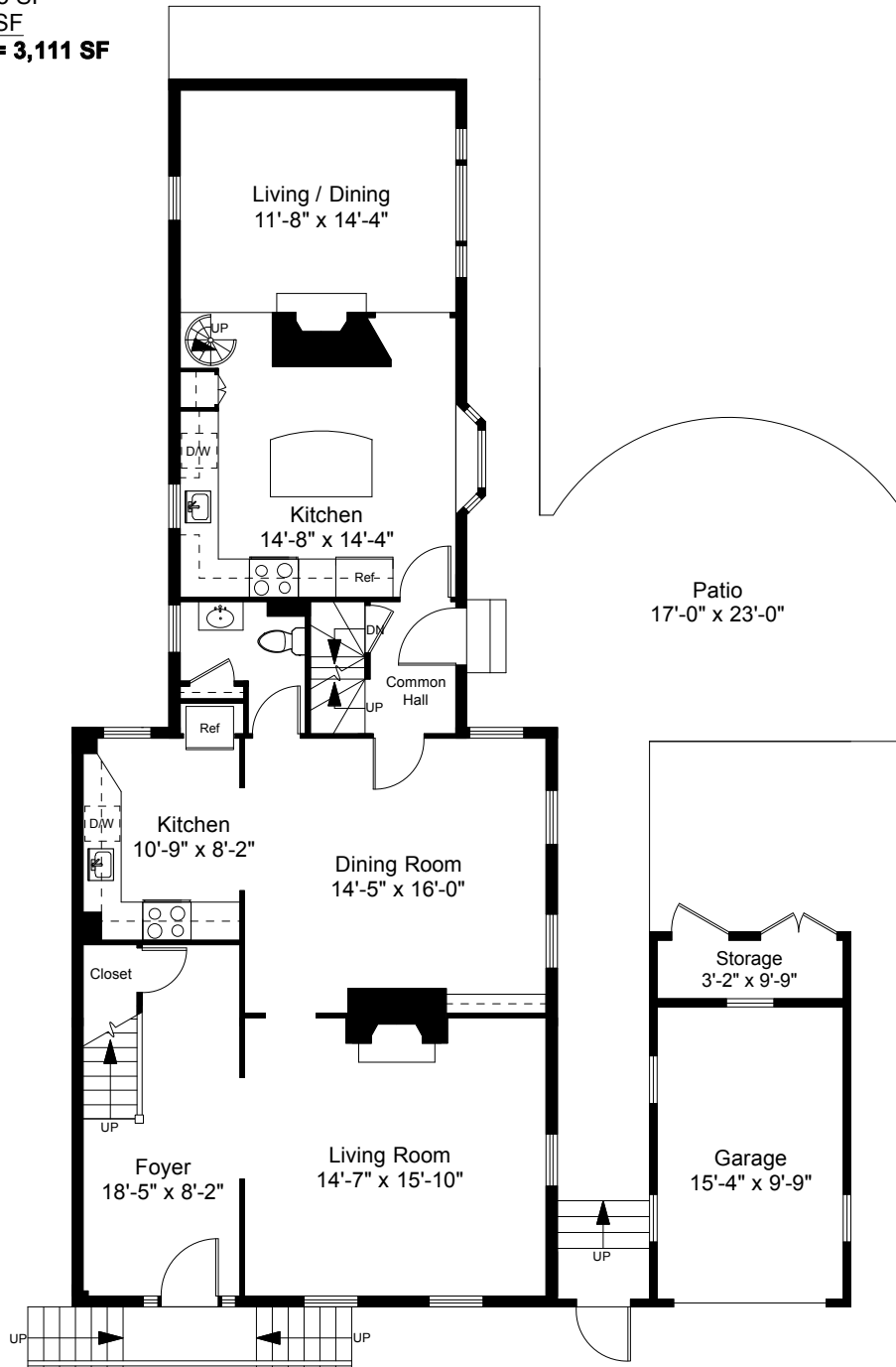
Square Footage Calculations

First Floor = 1,305 SF

Second Floor = 1,305 SF

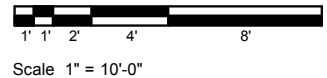
Third Floor = 501 SF

Total Gross Living Area = 3,111 SF

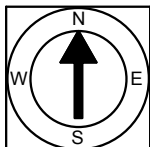


20 Sheldon Street
Providence, RI 02906

First Floor Plan
Ceiling Height = 9'-2"



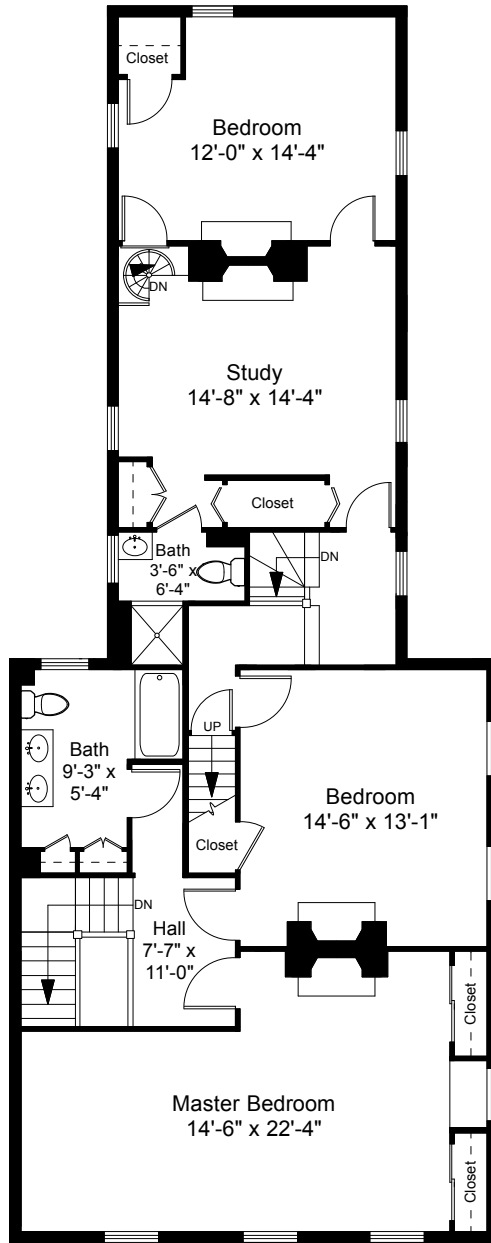
1



Completed: October 2013

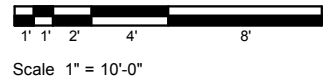
Note: Dimensions are not guaranteed and are provided for informational purposes only. Individual room dimensions are not used to calculate overall square footage.

NATIONAL
FLOOR PLANS
& PHOTOGRAPHY
(800) 328-0217

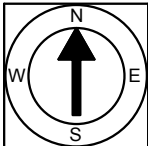


Second Floor Plan
Ceiling Height = 8'-10"

20 Sheldon Street
Providence, RI 02906



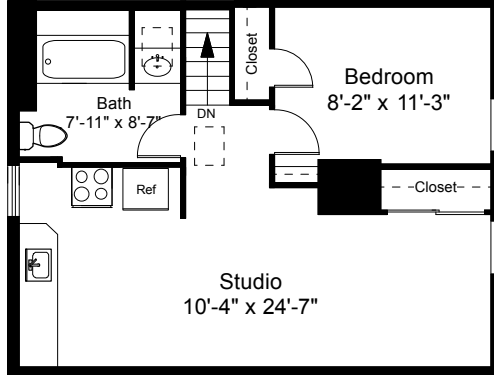
2



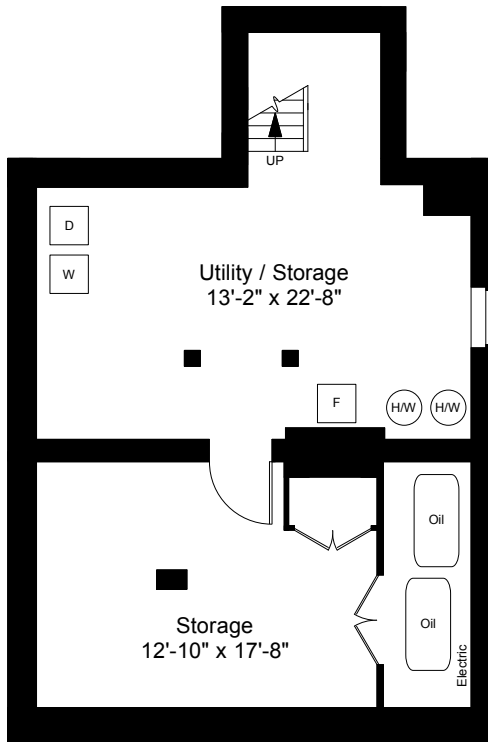
Completed: October 2013

Note: Dimensions are not guaranteed and are provided for informational purposes only. Individual room dimensions are not used to calculate overall square footage.

NATIONAL
FLOOR PLANS
& PHOTOGRAPHY
(800) 328-0217

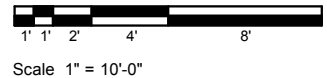


Third Floor Plan
Ceiling Height = 7'-0"

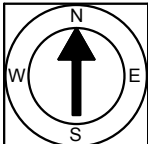


Basement Plan
Ceiling Height = 6'-6"

20 Sheldon Street
Providence, RI 02906



3



Completed: October 2013
 Note: Dimensions are not guaranteed and are provided for informational purposes only. Individual room dimensions are not used to calculate overall square footage.

NATIONAL
— FLOOR PLANS —
& PHOTOGRAPHY
(800) 328-0217