

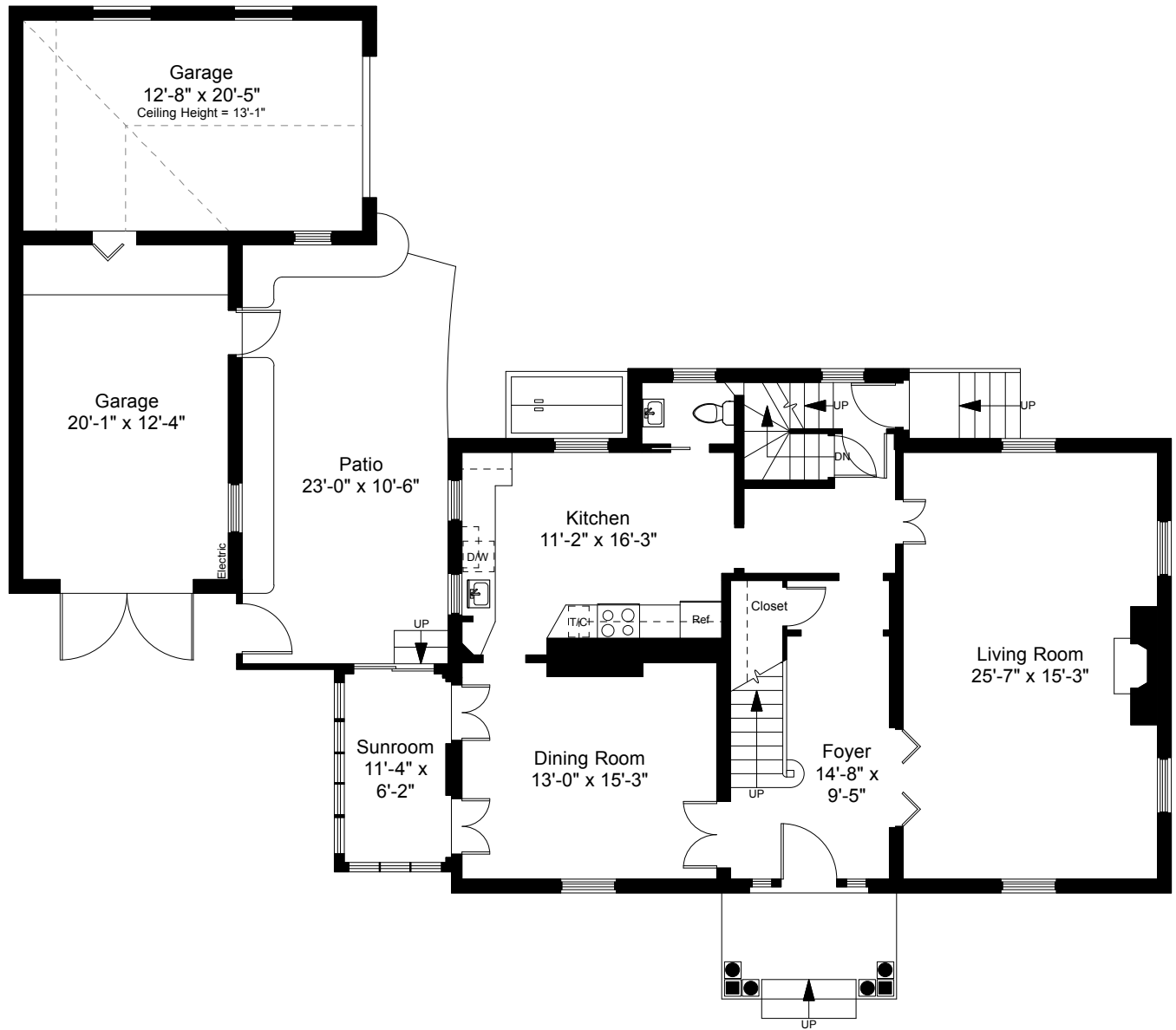
Square Footage Calculations

First Floor = 1,341 SF

Second Floor = 1,256 SF

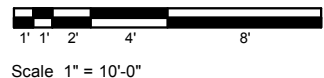
Third Floor = 944 SF

Total Gross Living Area = 3,541 SF

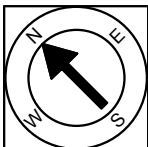


First Floor Plan
Ceiling Height = 8'-6"

335 Wayland Avenue
Providence, RI 02906



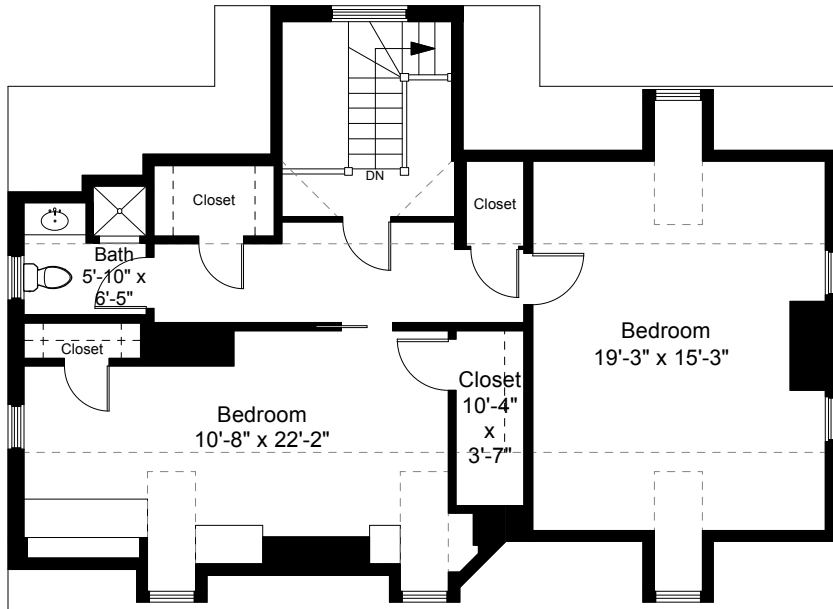
1



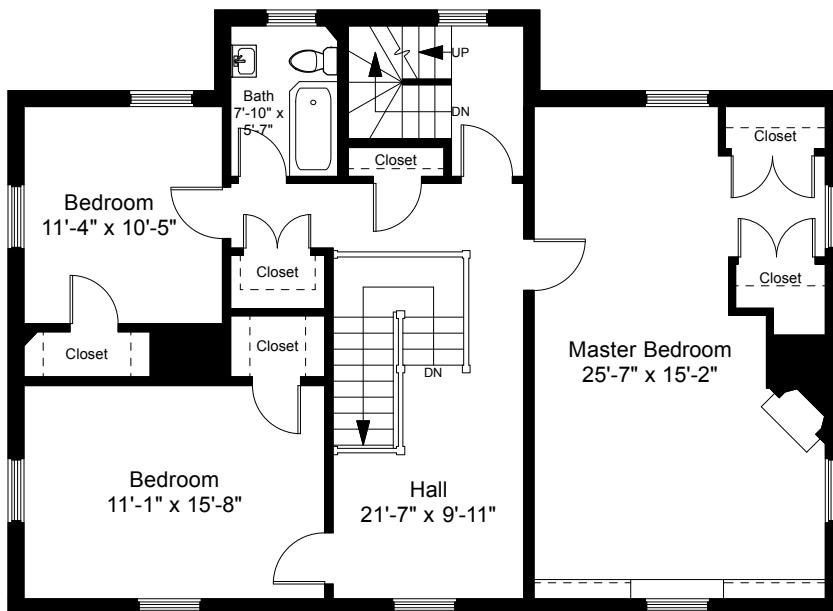
Completed: December 2016

Note: Dimensions are not guaranteed and are provided for informational purposes only. Individual room dimensions are not used to calculate overall square footage.

NATIONAL
FLOOR PLANS
& PHOTOGRAPHY
(800) 328-0217

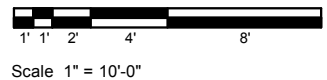


Third Floor Plan
Ceiling Height = 7'-9"

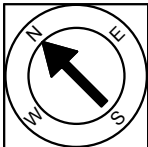


Second Floor Plan
Ceiling Height = 8'-0"

335 Wayland Avenue
Providence, RI 02906



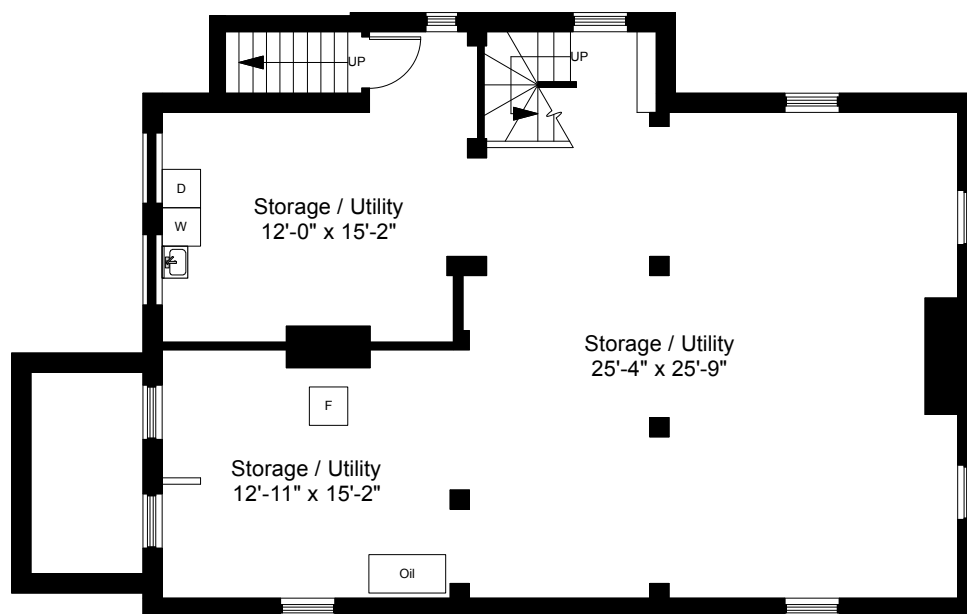
2



Completed: December 2016

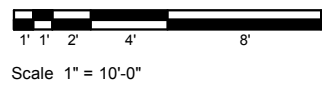
Note: Dimensions are not guaranteed and are provided for informational purposes only. Individual room dimensions are not used to calculate overall square footage.

NATIONAL
FLOOR PLANS
& PHOTOGRAPHY
(800) 328-0217

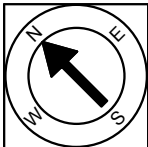


Basement Plan
Ceiling Height = 7'-2"

335 Wayland Avenue
Providence, RI 02906



3



Completed: December 2016
 Note: Dimensions are not guaranteed and are provided for informational purposes only. Individual room dimensions are not used to calculate overall square footage.

NATIONAL
 FLOOR PLANS
 & PHOTOGRAPHY
 (800) 328-0217