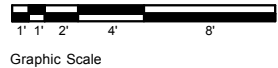


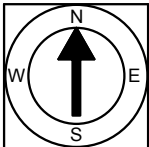
Square Footage Calculations
 First Floor = 1,724 SF
 Second Floor = 1,546 SF
 Third Floor = 890 SF
Total Gross Living Area = 4,160 SF

First Floor Plan
 Ceiling Height = 10'-6"

35 Charlesfield Street
 Providence, RI 02906

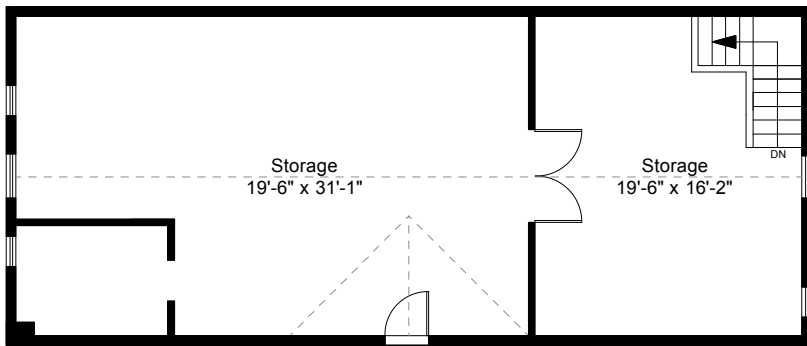


1

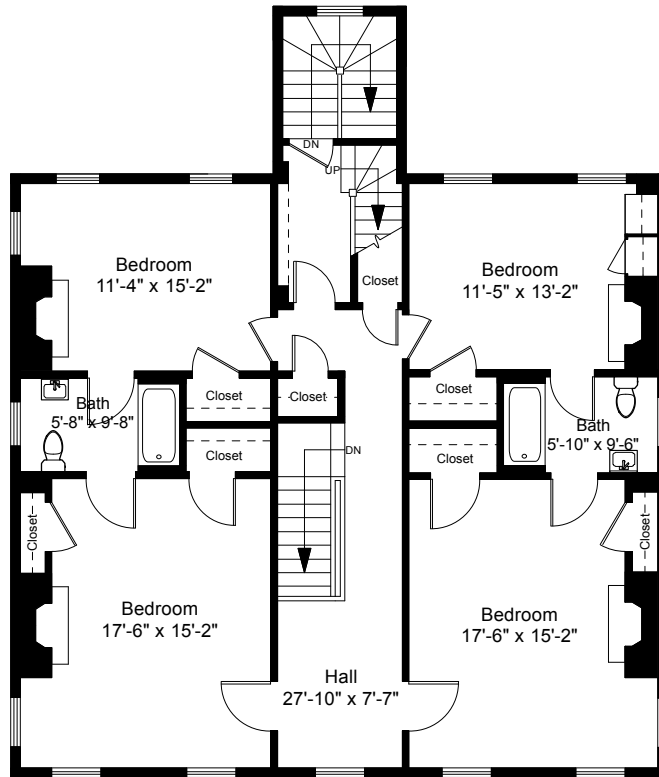


Completed: January 2017
 Note: Dimensions are not guaranteed and are provided for informational purposes only. Individual room dimensions are not used to calculate overall square footage.

NATIONAL
 FLOOR PLANS
 & PHOTOGRAPHY
 (800) 328-0217

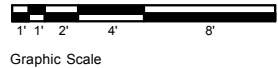


Carriage House - Second Floor Plan
 Ceiling Height = 12'-4"

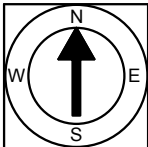


Second Floor Plan
 Ceiling Height = 10'-0"

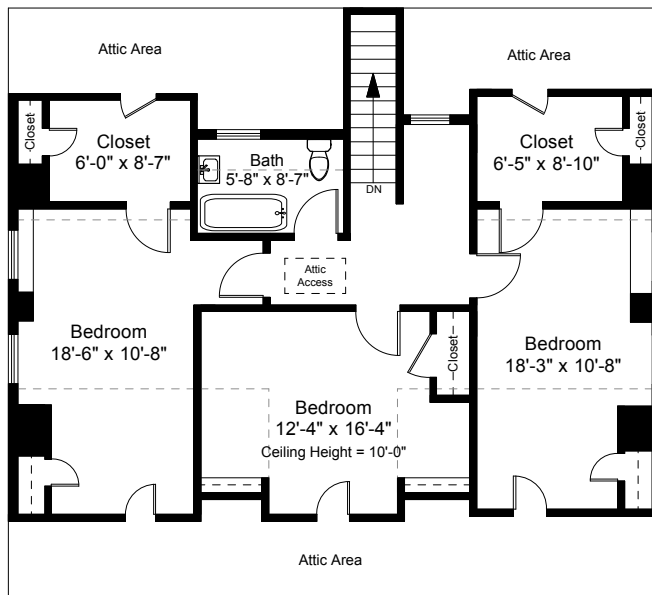
35 Charlesfield Street
 Providence, RI 02906



2

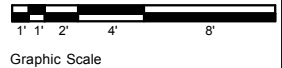


Completed: January 2017
 Note: Dimensions are not guaranteed and are provided for informational purposes only. Individual room dimensions are not used to calculate overall square footage.

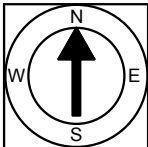


Third Floor Plan
Ceiling Height = 7'-5"

35 Charlesfield Street
Providence, RI 02906



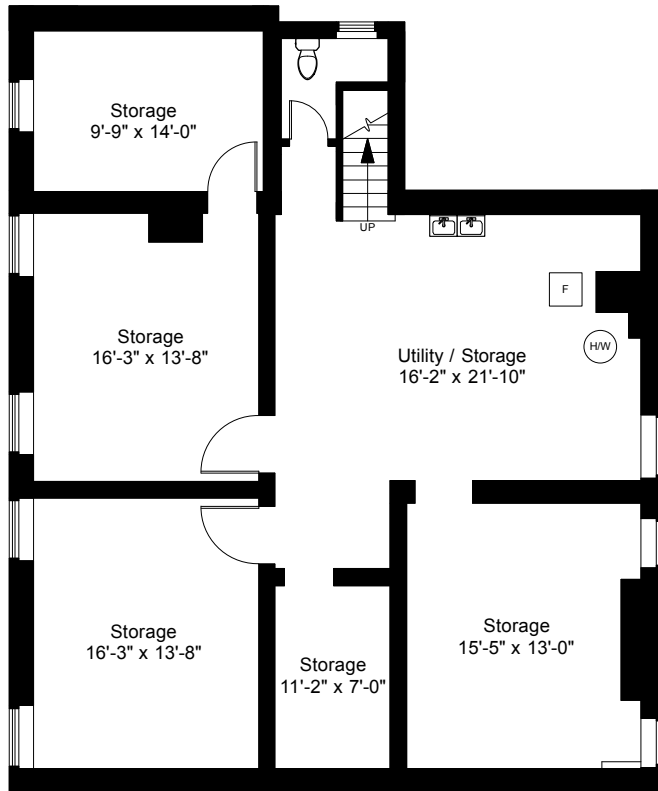
3



Completed: January 2017

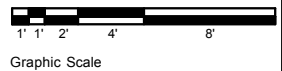
Note: Dimensions are not guaranteed and are provided for informational purposes only. Individual room dimensions are not used to calculate overall square footage.

NATIONAL
FLOOR PLANS
& PHOTOGRAPHY
(800) 328-0217

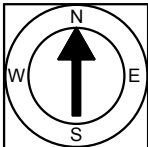


Basement Plan
Ceiling Height = 7'-9"

35 Charlesfield Street
Providence, RI 02906



4



Completed: January 2017
Note: Dimensions are not guaranteed and are provided for informational purposes only. Individual room dimensions are not used to calculate overall square footage.

NATIONAL
—FLOOR PLANS—
& PHOTOGRAPHY
(800) 328-0217