

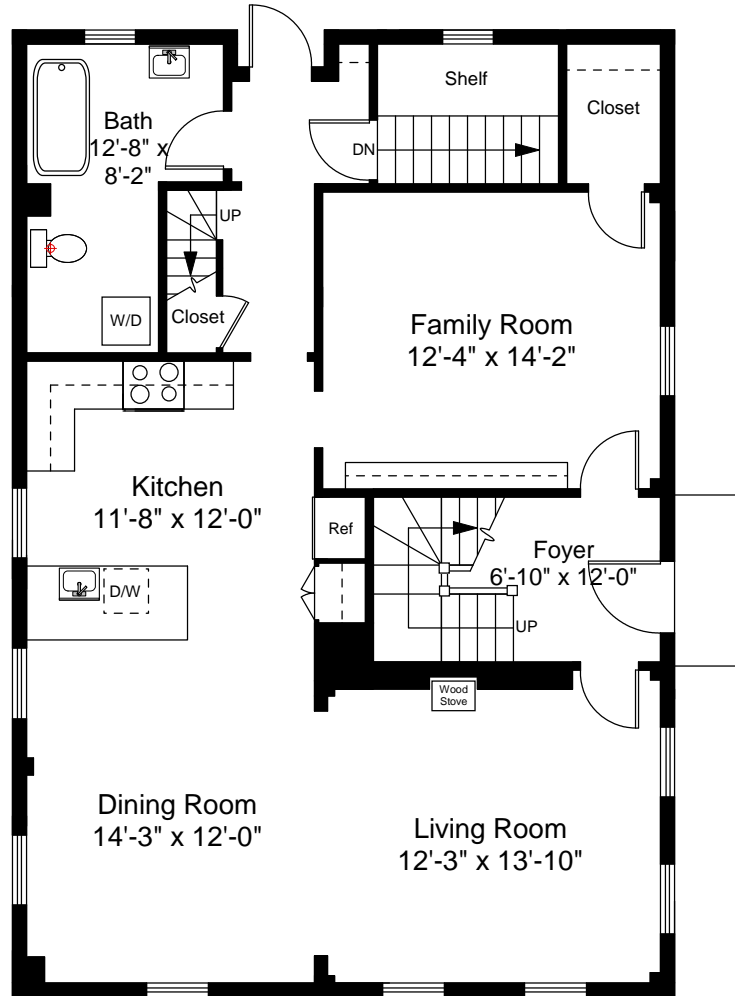
Square Footage Calculations

Ground Floor = 1,060 SF

First Floor = 1,105 SF

Second Floor = 941 SF

Total Gross Living Area = 3,106 SF



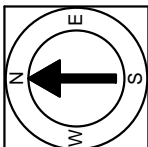
First Floor Plan
Ceiling Height = 8'-0"

1 Benefit Street
Providence, RI 02904



Scale 1/8" = 1'-0"

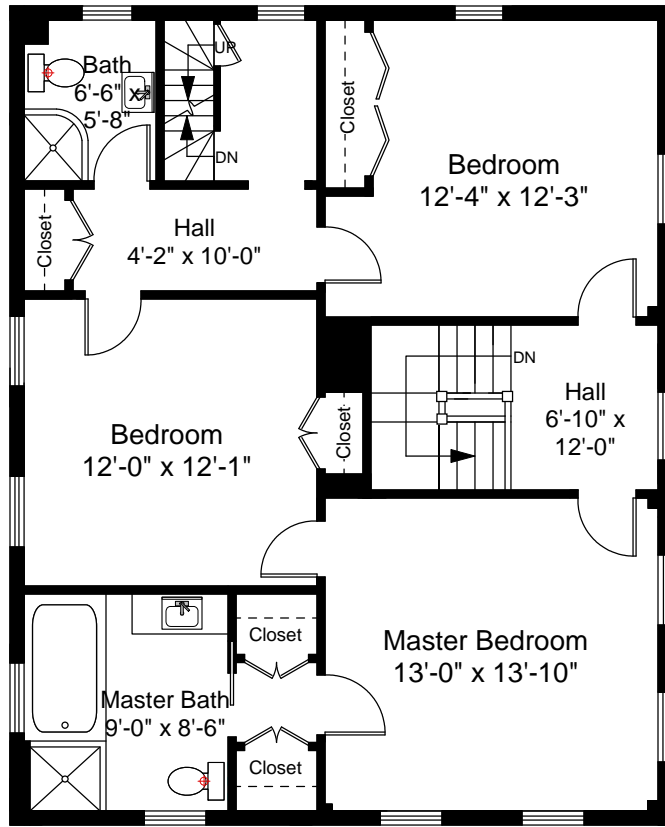
1



Completed: June, 2009

Note: Dimensions are not guaranteed and are provided for informational purposes only.

NEW ENGLAND
FLOOR PLANS
& PHOTOGRAPHY
(800) 328-0217



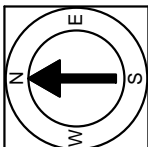
Second Floor Plan
 Ceiling Height = 7'-10"

1 Benefit Street
 Providence, RI 02904



Scale 1/8" = 1'-0"

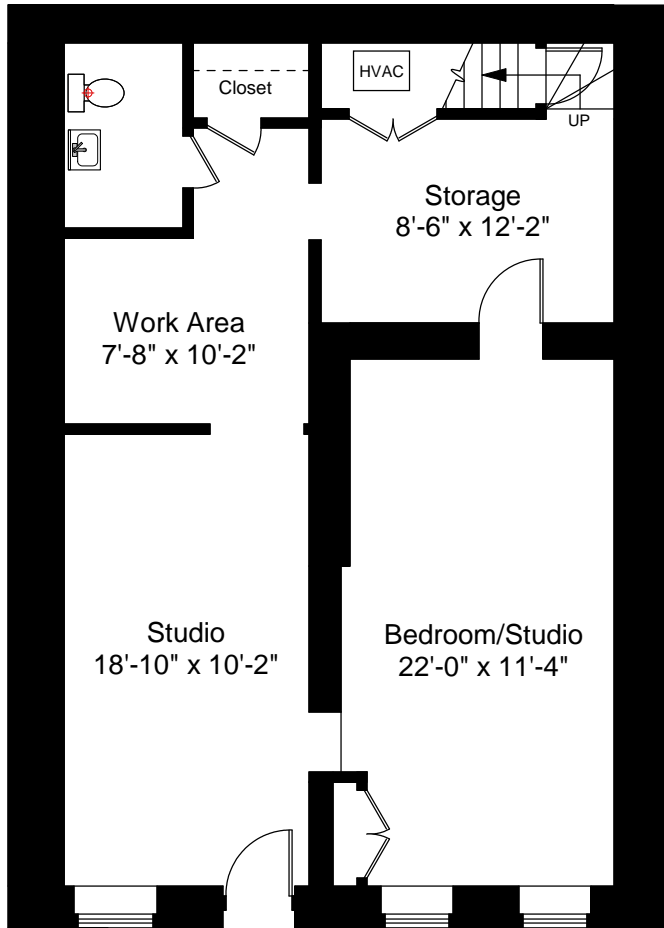
2



Completed: June, 2009

Note: Dimensions are not guaranteed and are provided for informational purposes only.

NEW ENGLAND
 FLOOR PLANS
 & PHOTOGRAPHY
 (800) 328-0217



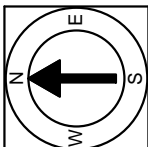
Ground Floor Plan
Ceiling Height = 8'-3"

1 Benefit Street
Providence, RI 02904



Scale 1/8" = 1'-0"

3



Completed: June, 2009

Note: Dimensions are not guaranteed and are provided for informational purposes only.

NEW ENGLAND
— FLOOR PLANS —
& PHOTOGRAPHY
(800) 328-0217