

**Square Footage Calculations**

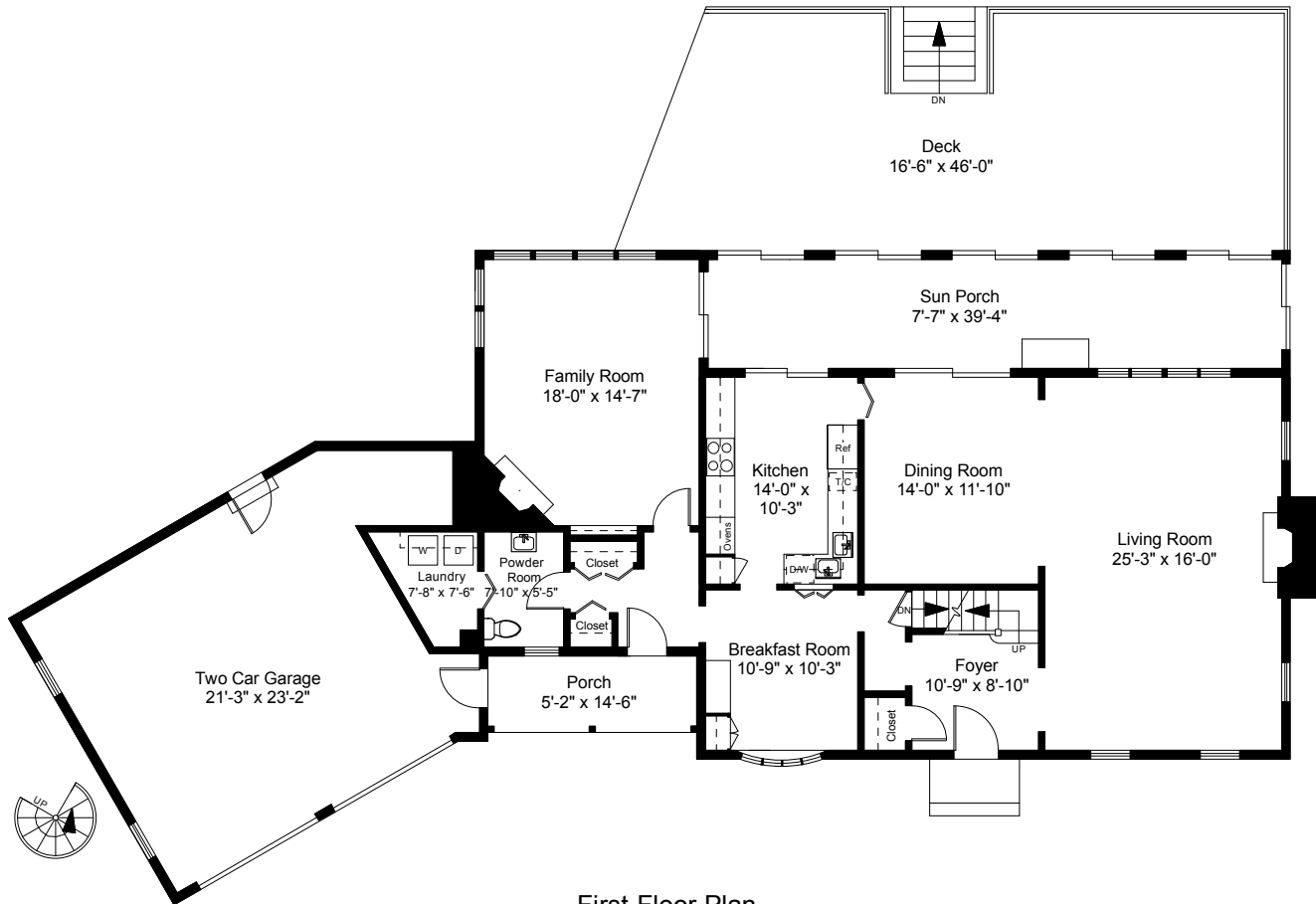
First Floor = 1,533 SF

Second Floor = 1,883 SF

Total Above Grade Living Area = 3,416

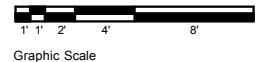
Lower Level Finished Area = 654 SF

**Total Gross Living Area = 4,070 SF**

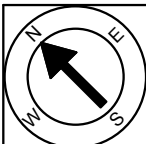


**First Floor Plan**  
Ceiling Height = 7'-10"

12 Half Mile Road  
Barrington, RI 02806



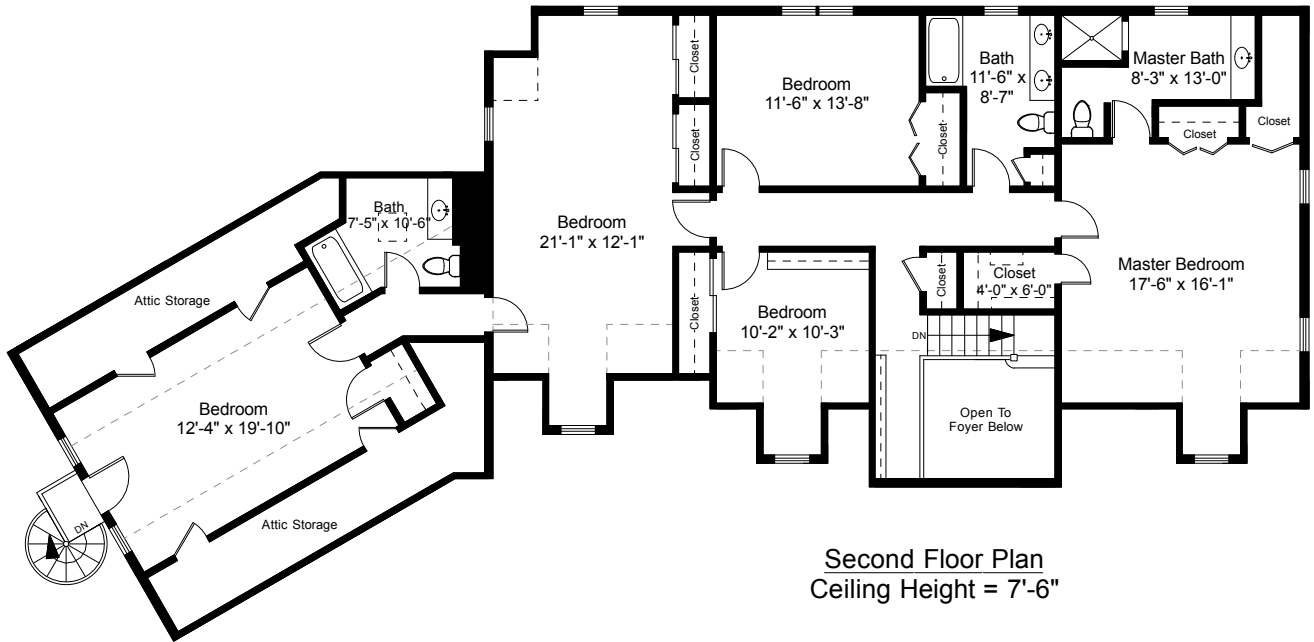
1



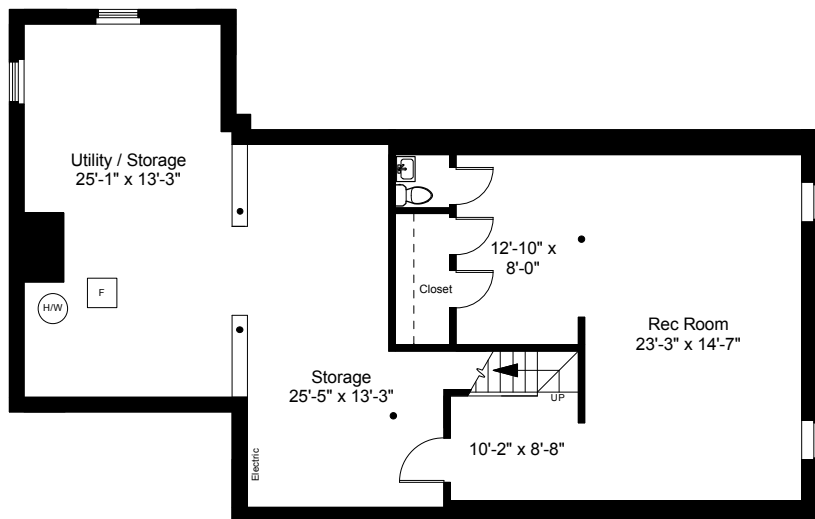
Completed: April 2017

Note: Dimensions are not guaranteed and are provided for informational purposes only. Individual room dimensions are not used to calculate overall square footage.

**NATIONAL**  
— FLOOR PLANS —  
& PHOTOGRAPHY  
(800) 328-0217

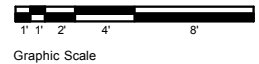


Second Floor Plan  
Ceiling Height = 7'-6"

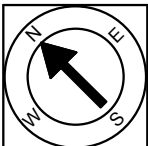


Lower Level Plan  
Ceiling Height = 7'-0"

12 Half Mile Road  
Barrington, RI 02806



2



Completed: April 2017

Note: Dimensions are not guaranteed and are provided for informational purposes only. Individual room dimensions are not used to calculate overall square footage.

**NATIONAL**  
— FLOOR PLANS —  
& PHOTOGRAPHY  
(800) 328-0217