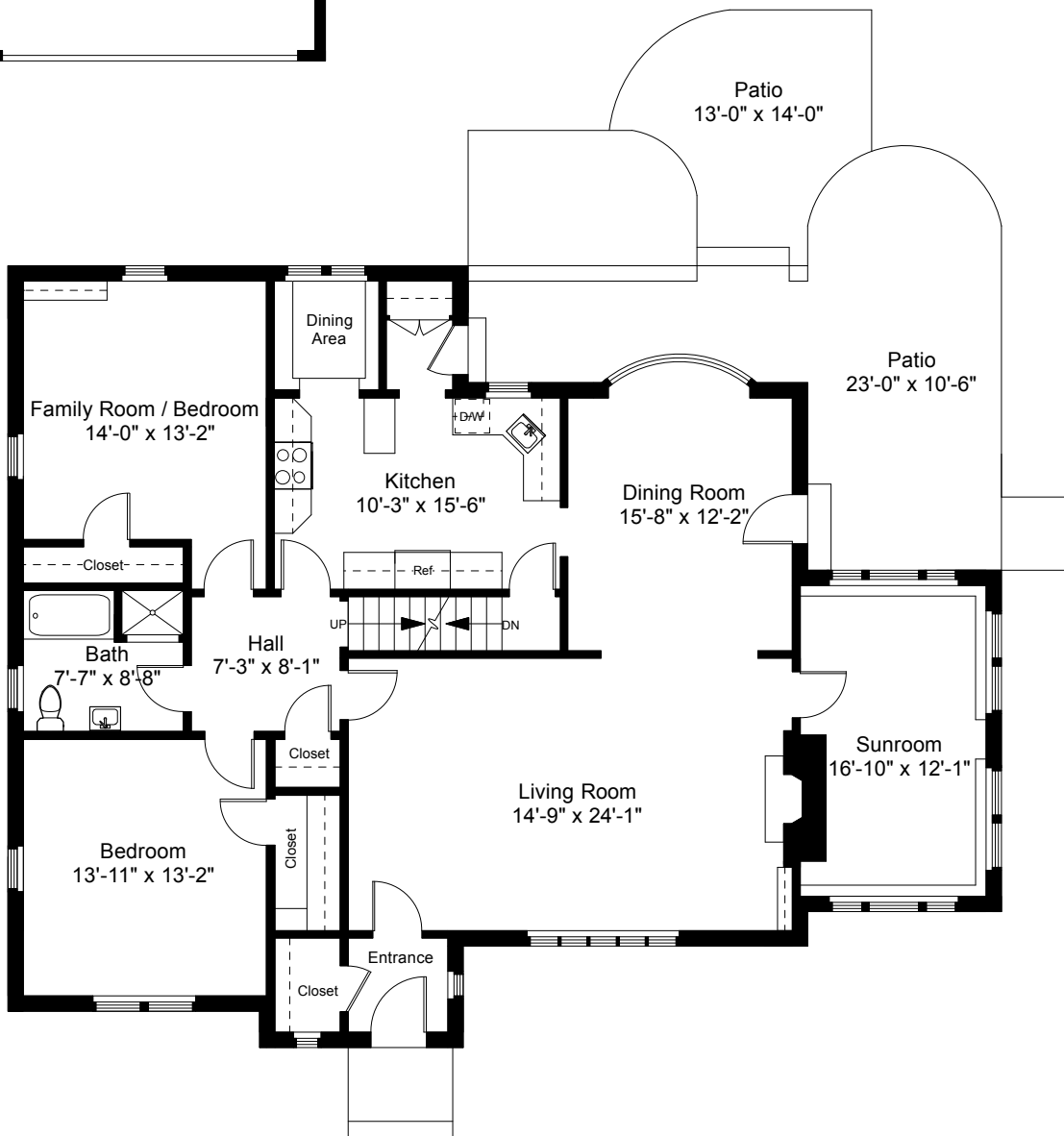


Two Car Garage
19'-0" x 17'-9"

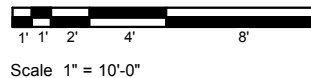
Square Footage Calculations

First Floor = 1,793 SF
 Second Floor = 1,164 SF
 Total Above Grade Living Area = 2,957 SF
 Lower Level Finished Area = 1,290 SF
Total Gross Living Area = 4,247 SF

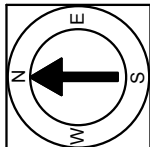


585 Elmgrove Avenue
Providence, RI 02906

First Floor Plan
Ceiling Height = 8'-6"

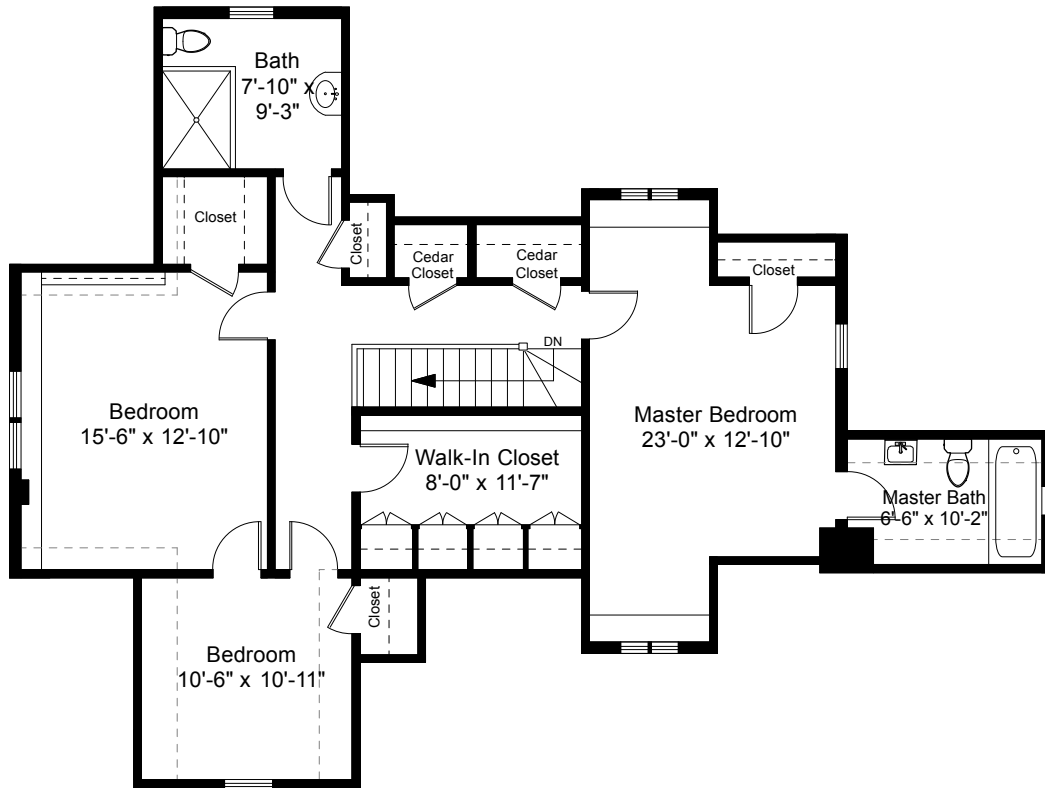


1



Completed: May 2017
 Note: Dimensions are not guaranteed and are provided for informational purposes only. Individual room dimensions are not used to calculate overall square footage.

NATIONAL
FLOOR PLANS
& PHOTOGRAPHY
(800) 328-0217



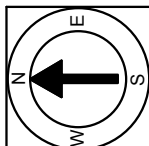
Second Floor Plan
Ceiling Height = 7'-10"

585 Elmgrove Avenue
Providence, RI 02906



Scale 1" = 10'-0"

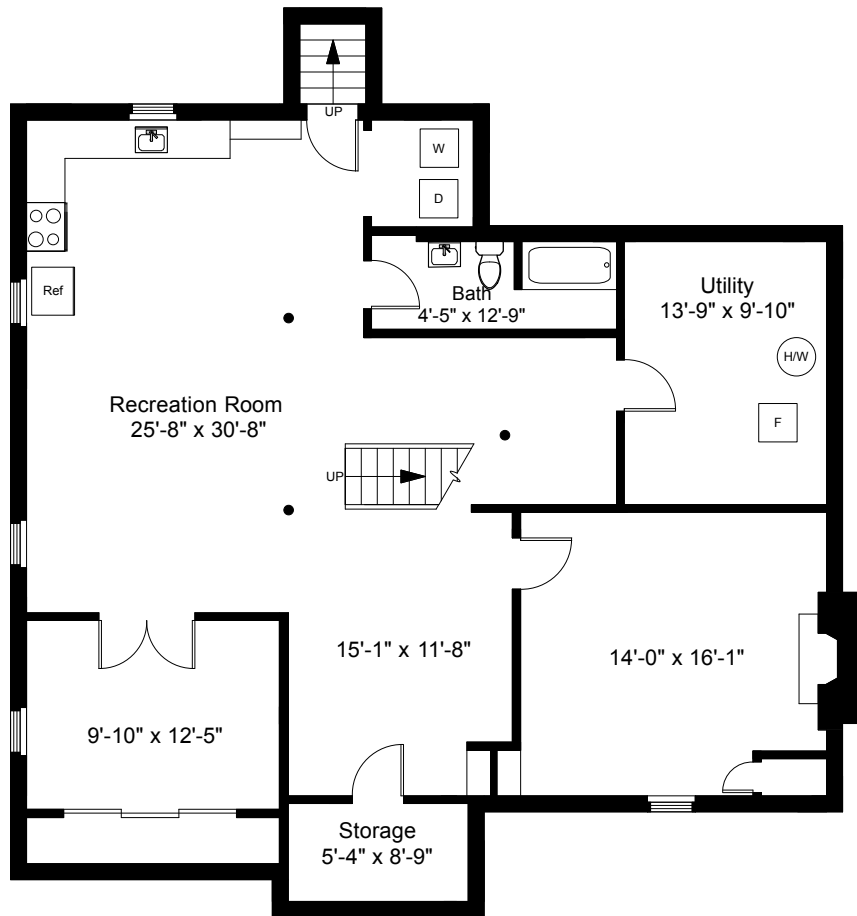
2



Completed: May 2017

Note: Dimensions are not guaranteed and are provided for informational purposes only. Individual room dimensions are not used to calculate overall square footage.

NATIONAL
FLOOR PLANS
& PHOTOGRAPHY
(800) 328-0217



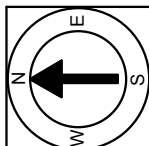
Lower Level Plan
Ceiling Height = 7'-2"

585 Elmgrove Avenue
Providence, RI 02906



Scale 1" = 10'-0"

3



Completed: May 2017

Note: Dimensions are not guaranteed and are provided for informational purposes only. Individual room dimensions are not used to calculate overall square footage.

NATIONAL
FLOOR PLANS
& PHOTOGRAPHY
(800) 328-0217