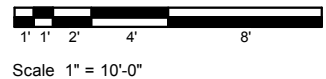
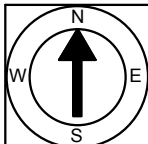


First Floor Plan
Ceiling Height = 8'-4"

6 Westford Road
Providence, RI 02906



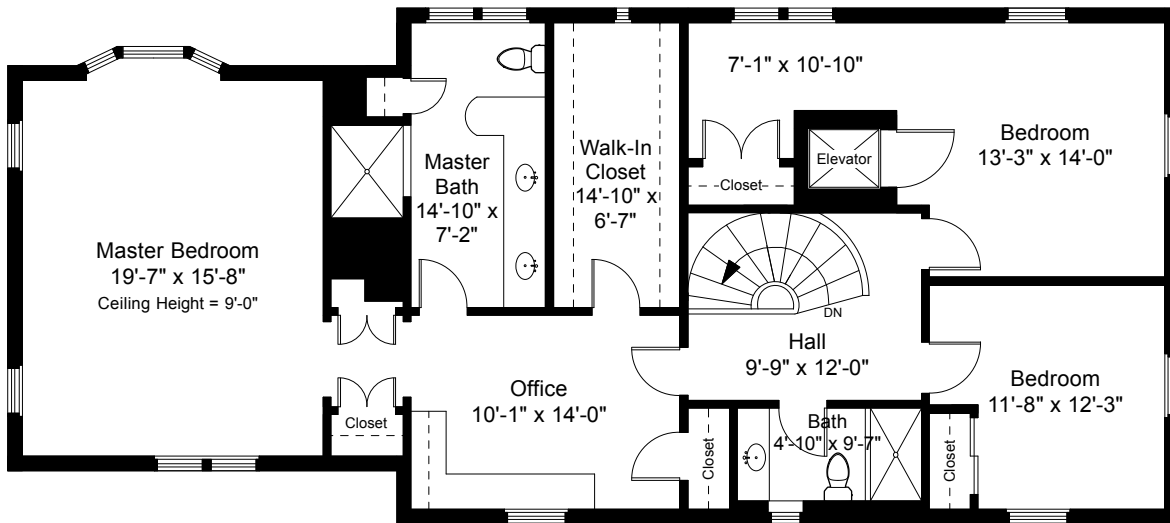
1



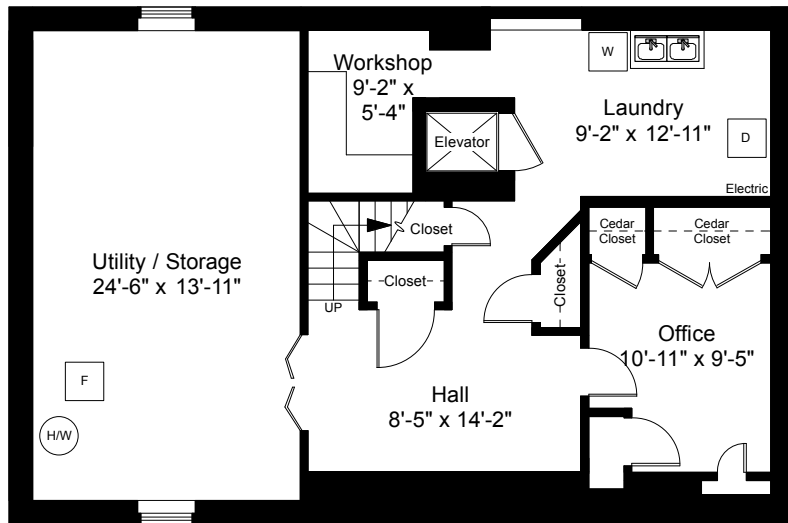
Completed: April 2017

Note: Dimensions are not guaranteed and are provided for informational purposes only. Individual room dimensions are not used to calculate overall square footage.

NATIONAL
—FLOOR PLANS—
& PHOTOGRAPHY
(800) 328-0217

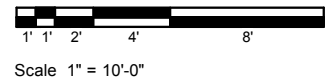


Second Floor Plan
Ceiling Height = 8'-0"

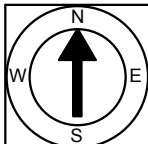


Lower Level Plan
Ceiling Height = 7'-4"

6 Westford Road
Providence, RI 02906



2



Completed: April 2017

Note: Dimensions are not guaranteed and are provided for informational purposes only. Individual room dimensions are not used to calculate overall square footage.

NATIONAL
— FLOOR PLANS —
& PHOTOGRAPHY
(800) 328-0217