

Square Footage Calculations

First Floor = 1,098 SF
 Second Floor = 1,084 SF
 Third Floor = 594 SF

Total Above Grade Living Area = 2,776
 Lower Level Finished Area = 467 SF
Total Gross Living Area = 3,243 SF

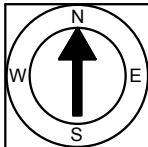
306 Olney Street
 Providence, RI 02906

First Floor Plan
 Ceiling Height = 8'-4"



Scale 1/8" = 1'-0"

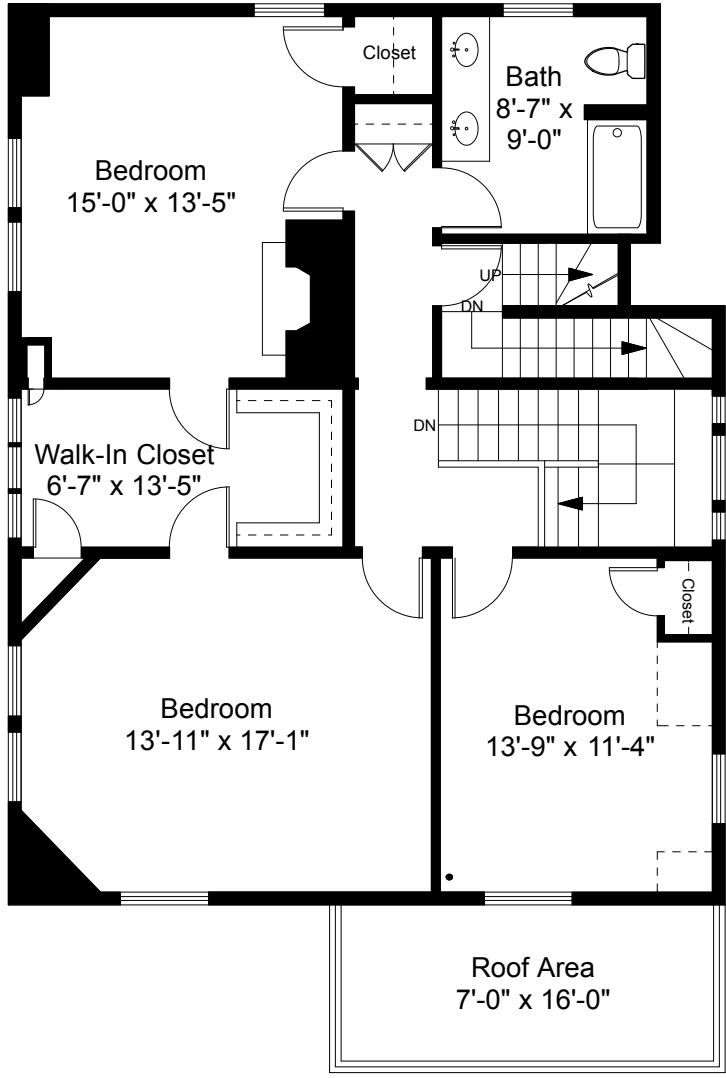
1



Completed: July 2017

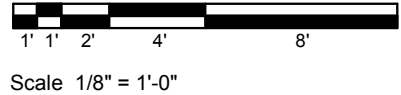
Note: Dimensions are not guaranteed and are provided for informational purposes only. Individual room dimensions are not used to calculate overall square footage.

NATIONAL
 FLOOR PLANS
 & PHOTOGRAPHY
 (800) 328-0217

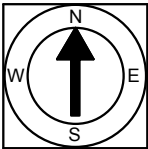


Second Floor Plan
Ceiling Height = 8'-5"

306 Olney Street
Providence, RI 02906

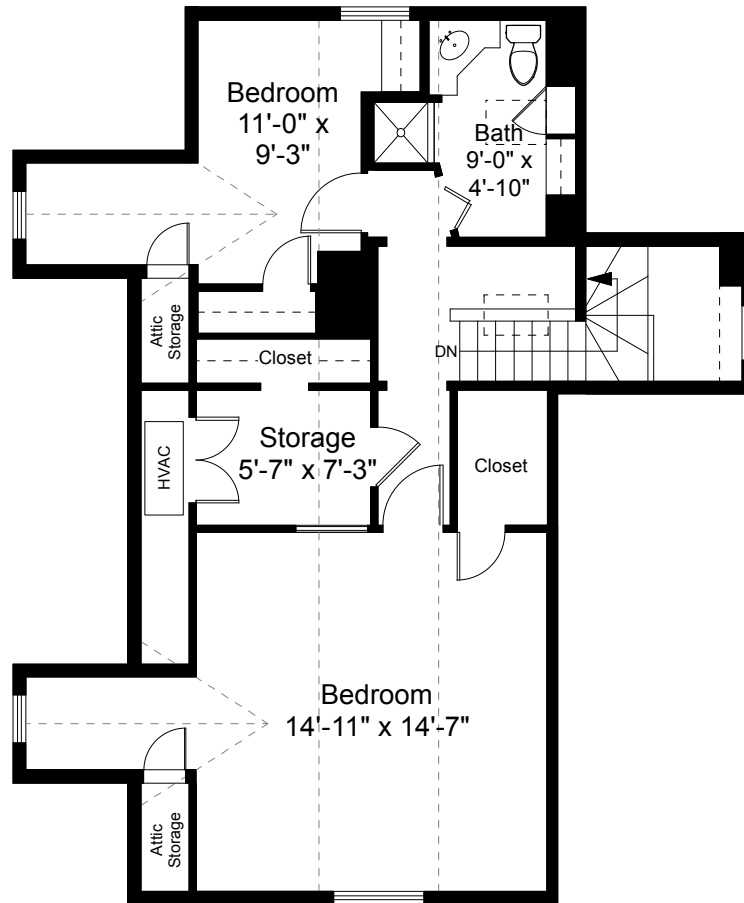


2



Completed: July 2017
 Note: Dimensions are not guaranteed and are provided for informational purposes only. Individual room dimensions are not used to calculate overall square footage.





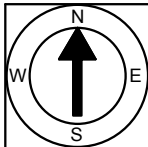
Third Floor Plan
Ceiling Height = 8'-0"

306 Olney Street
Providence, RI 02906



Scale 1/8" = 1'-0"

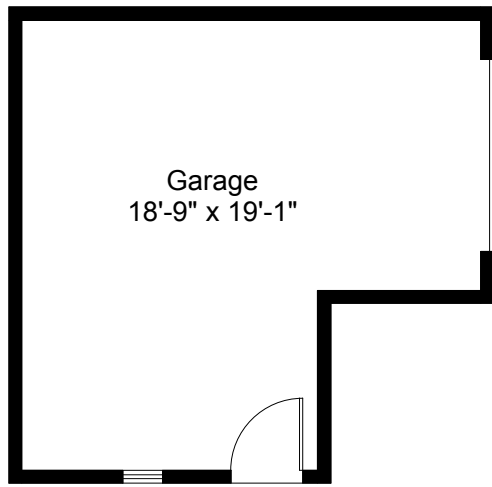
3



Completed: July 2017

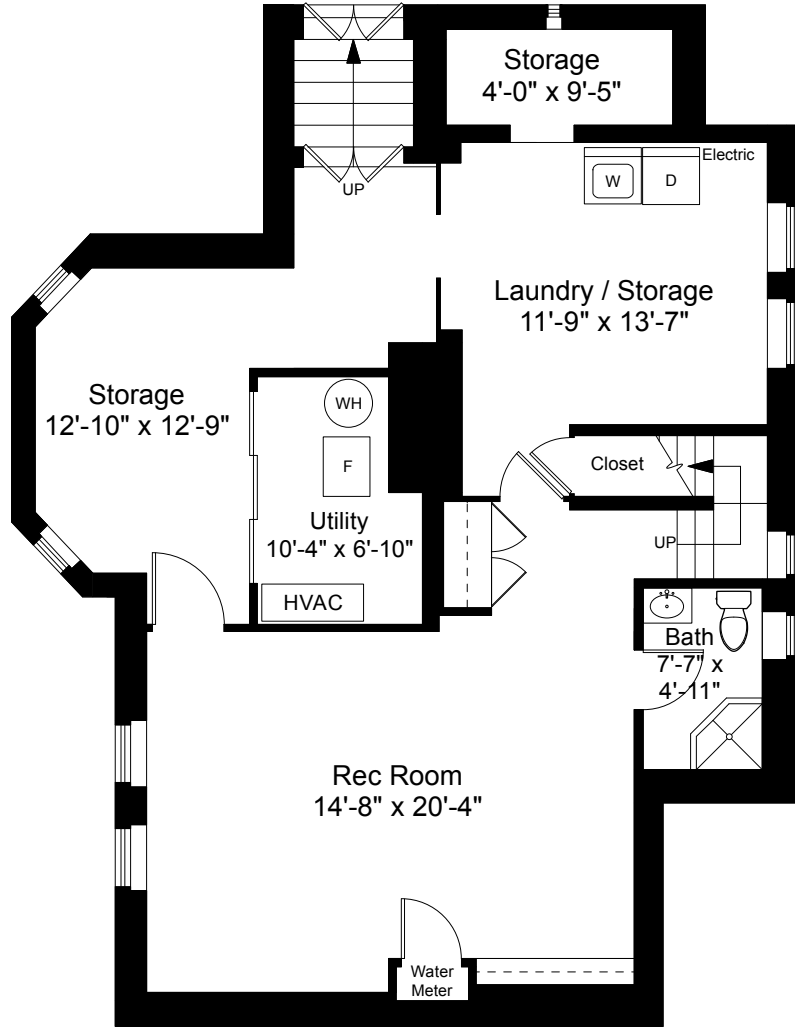
Note: Dimensions are not guaranteed and are provided for informational purposes only. Individual room dimensions are not used to calculate overall square footage.

NATIONAL
—FLOOR PLANS—
& PHOTOGRAPHY
(800) 328-0217



Garage
18'-9" x 19'-1"

Garage Plan



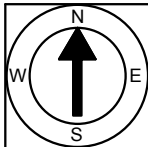
Lower Level Plan
Ceiling Height = 7'-8"



Scale 1/8" = 1'-0"

306 Olney Street
Providence, RI 02906

4



Completed: July 2017

Note: Dimensions are not guaranteed and are provided for informational purposes only. Individual room dimensions are not used to calculate overall square footage.

NATIONAL
—FLOOR PLANS—
& PHOTOGRAPHY
(800) 328-0217