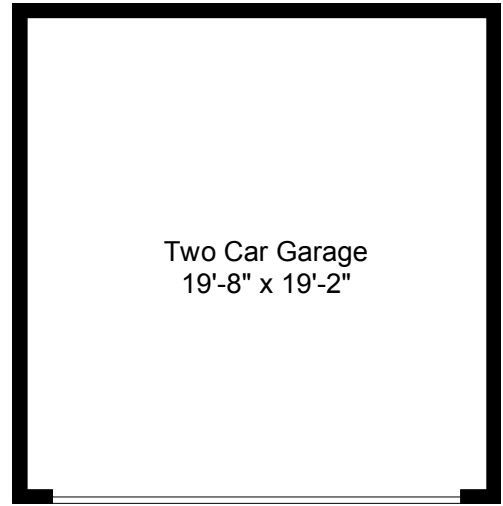
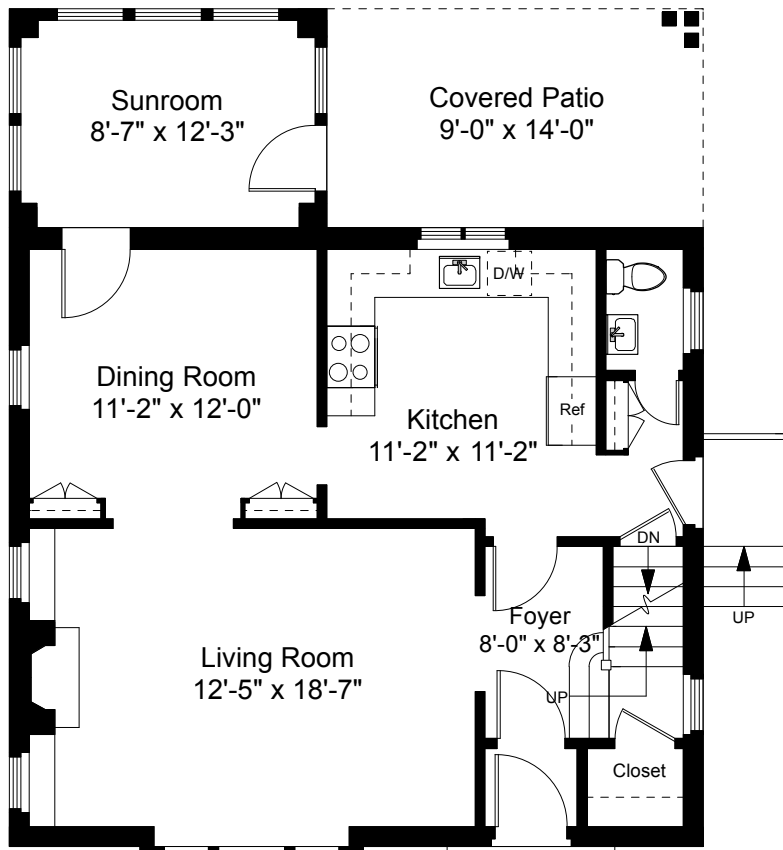


**Square Footage Calculations**

First Floor = 872 SF  
Second Floor = 714 SF  
Total Above Grade Living Area = 1,586 SF  
Lower Level Finished Area = 475 SF  
**Total Gross Living Area = 2,061 SF**



Garage Plan



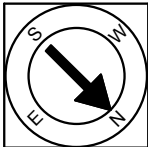
First Floor Plan  
Ceiling Height = 8'-3"

129 Woodbine Street  
Providence, RI 02906



Scale 1/8" = 1'-0"

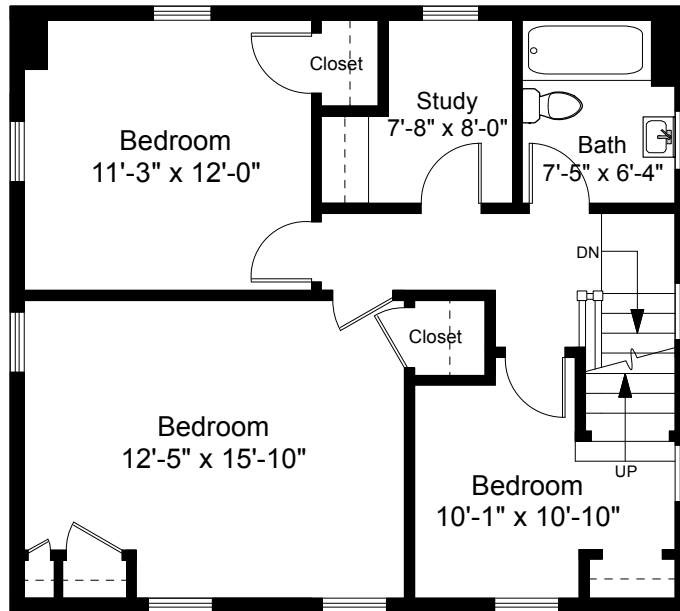
1



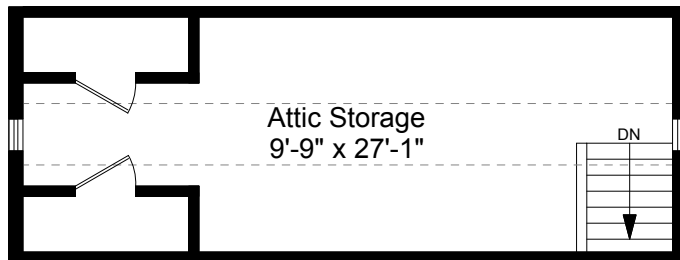
Completed: June 2017

Note: Dimensions are not guaranteed and are provided for informational purposes only. Individual room dimensions are not used to calculate overall square footage.

**NATIONAL**  
FLOOR PLANS  
& PHOTOGRAPHY  
(800) 328-0217



Second Floor Plan  
Ceiling Height = 8'-0"



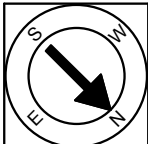
Third Floor Plan  
Ceiling Height = 6'-3"

129 Woodbine Street  
Providence, RI 02906



Scale 1/8" = 1'-0"

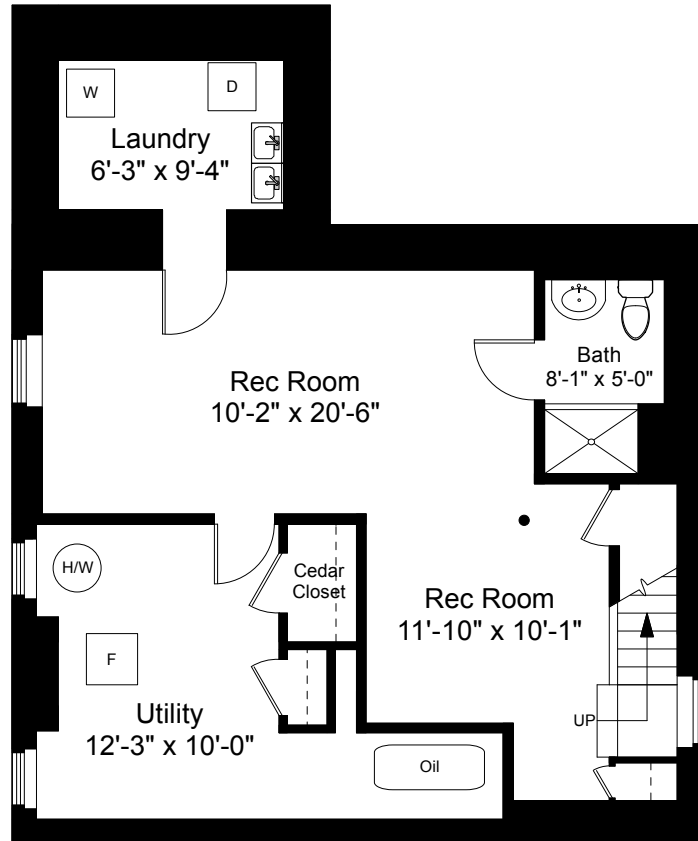
2



Completed: June 2017

Note: Dimensions are not guaranteed and are provided for informational purposes only. Individual room dimensions are not used to calculate overall square footage.

**NATIONAL**  
— FLOOR PLANS —  
& PHOTOGRAPHY  
(800) 328-0217



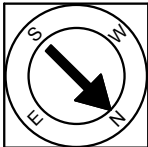
Lower Level Plan  
Ceiling Height = 7'-6"

129 Woodbine Street  
Providence, RI 02906



Scale 1/8" = 1'-0"

3



Completed: June 2017

Note: Dimensions are not guaranteed and are provided for informational purposes only. Individual room dimensions are not used to calculate overall square footage.

**NATIONAL**  
—FLOOR PLANS—  
& PHOTOGRAPHY  
(800) 328-0217