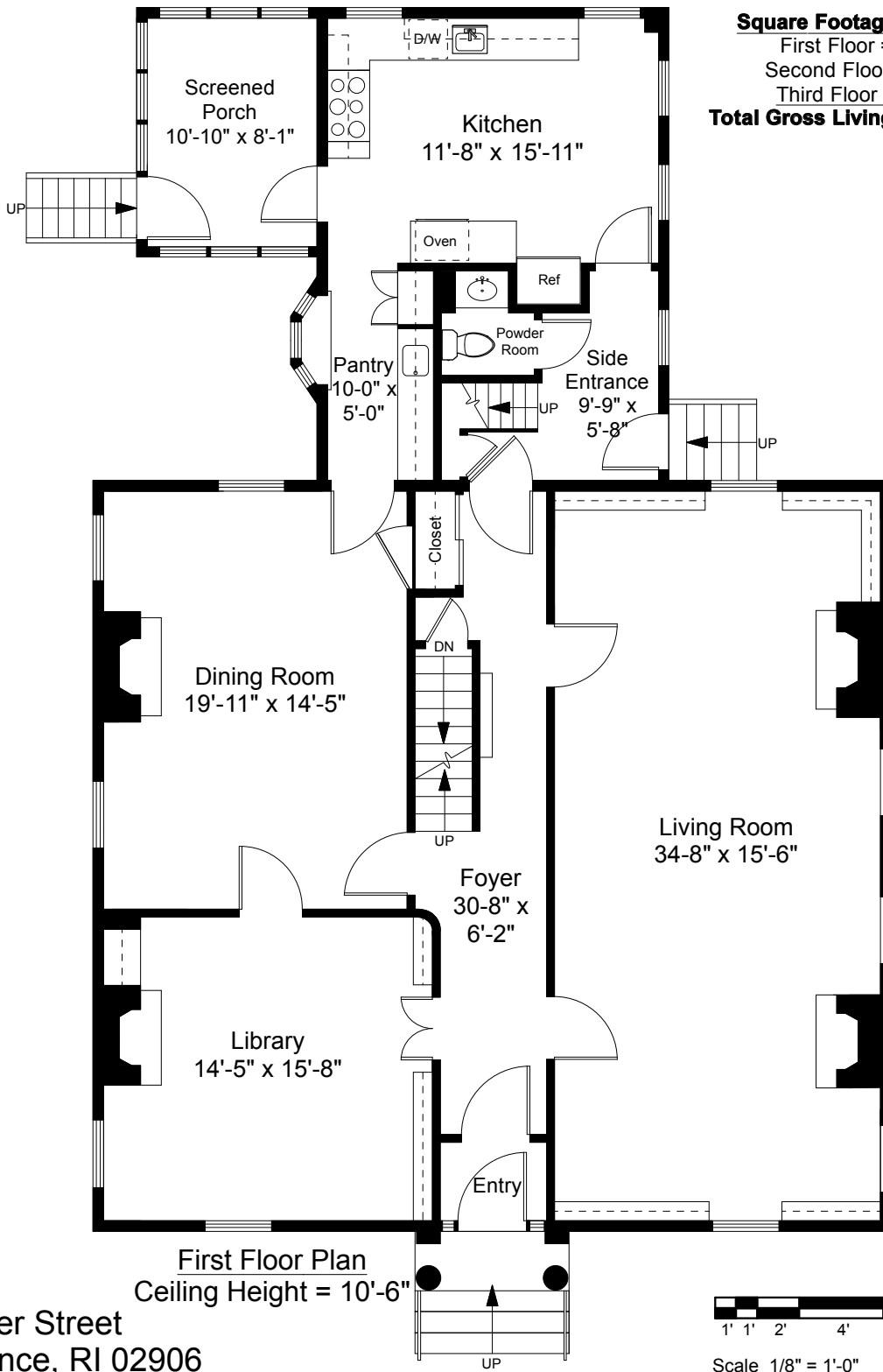


Square Footage Calculations
 First Floor = 1,734 SF
 Second Floor = 1,734 SF
 Third Floor = 1,110 SF
Total Gross Living Area = 4,578 SF



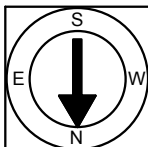
First Floor Plan
 Ceiling Height = 10'-6"

85 Power Street
 Providence, RI 02906



Scale 1/8" = 1'-0"

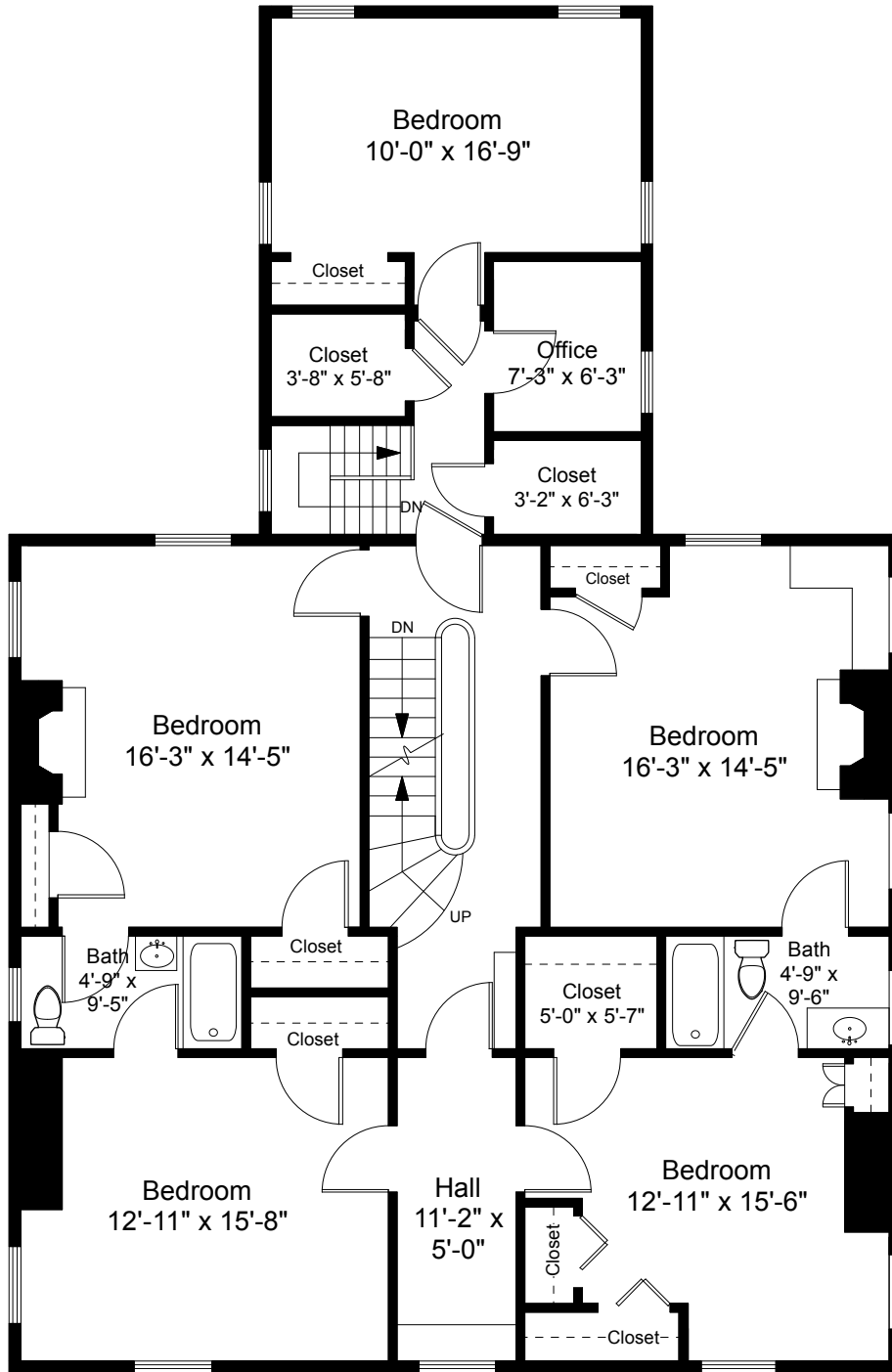
1



Completed: June 2017

Note: Dimensions are not guaranteed and are provided for informational purposes only. Individual room dimensions are not used to calculate overall square footage.

NATIONAL
 FLOOR PLANS
 & PHOTOGRAPHY
 (800) 328-0217



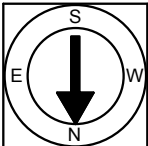
Second Floor Plan
Ceiling Height = 10'-5"

85 Power Street
Providence, RI 02906



Scale 1/8" = 1'-0"

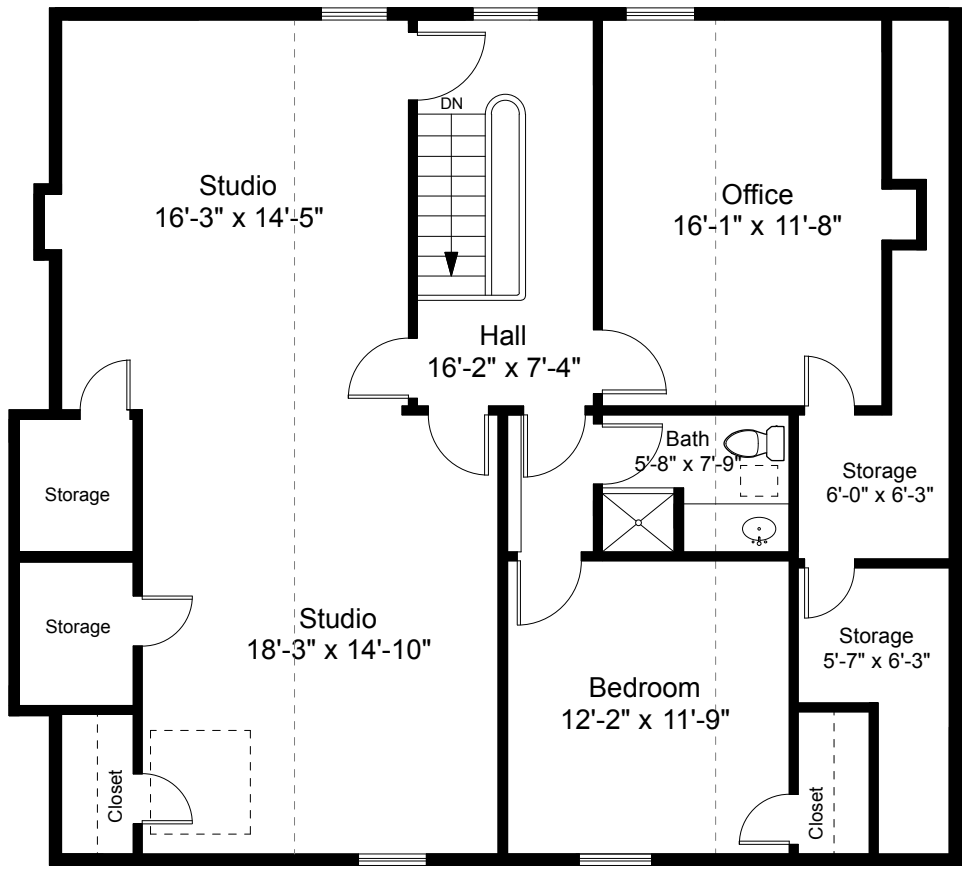
2



Completed: June 2017

Note: Dimensions are not guaranteed and are provided for informational purposes only. Individual room dimensions are not used to calculate overall square footage.

NATIONAL
FLOOR PLANS
& PHOTOGRAPHY
(800) 328-0217



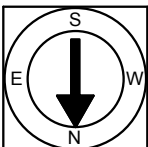
Third Floor Plan
Ceiling Height = 8'-3"

85 Power Street
Providence, RI 02906



Scale 1/8" = 1'-0"

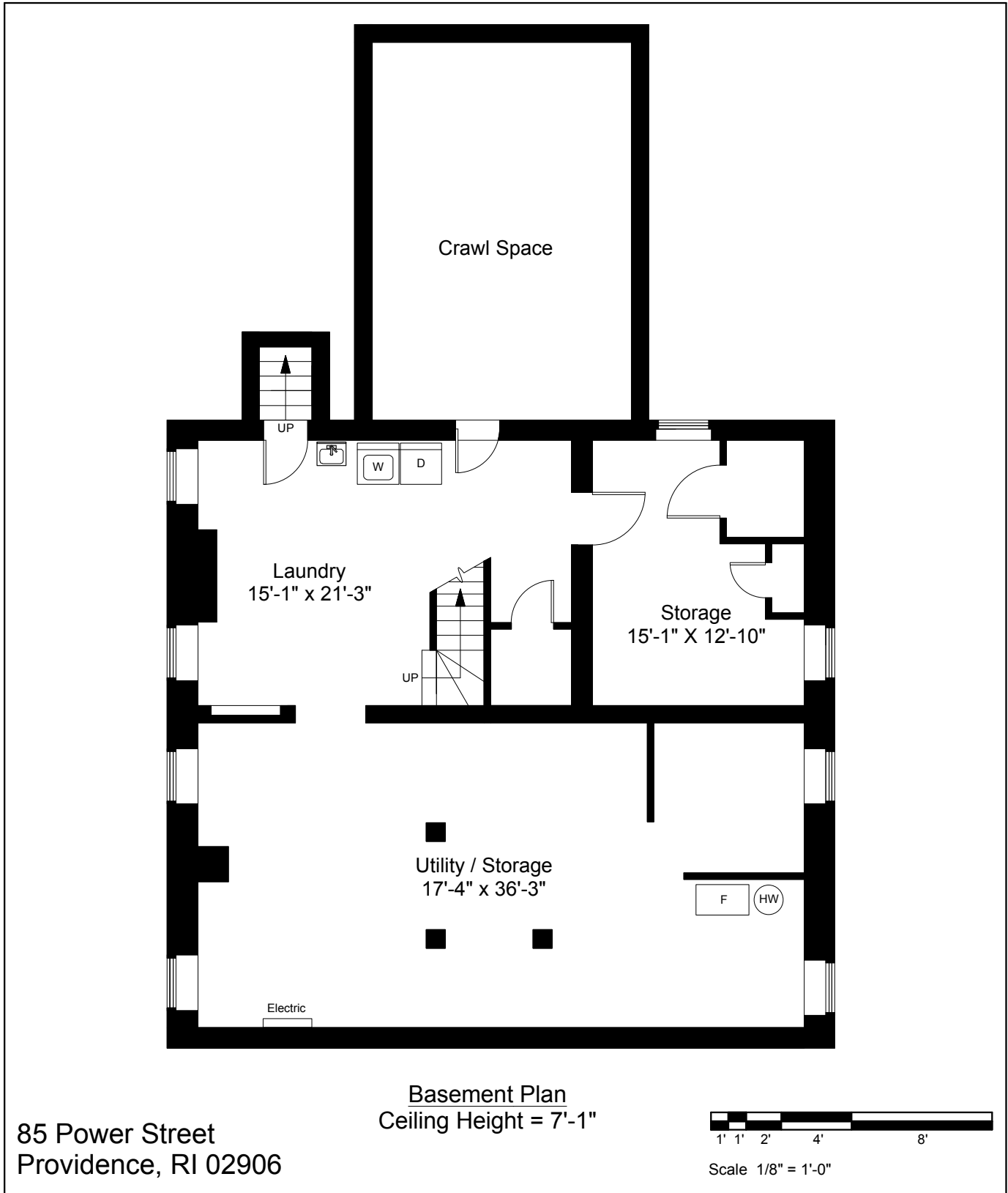
3



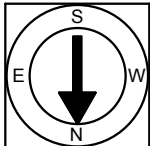
Completed: June 2017

Note: Dimensions are not guaranteed and are provided for informational purposes only. Individual room dimensions are not used to calculate overall square footage.





4



Completed: June 2017

Note: Dimensions are not guaranteed and are provided for informational purposes only. Individual room dimensions are not used to calculate overall square footage.

NATIONAL
FLOOR PLANS
& PHOTOGRAPHY
(800) 328-0217