

Square Footage Calculations

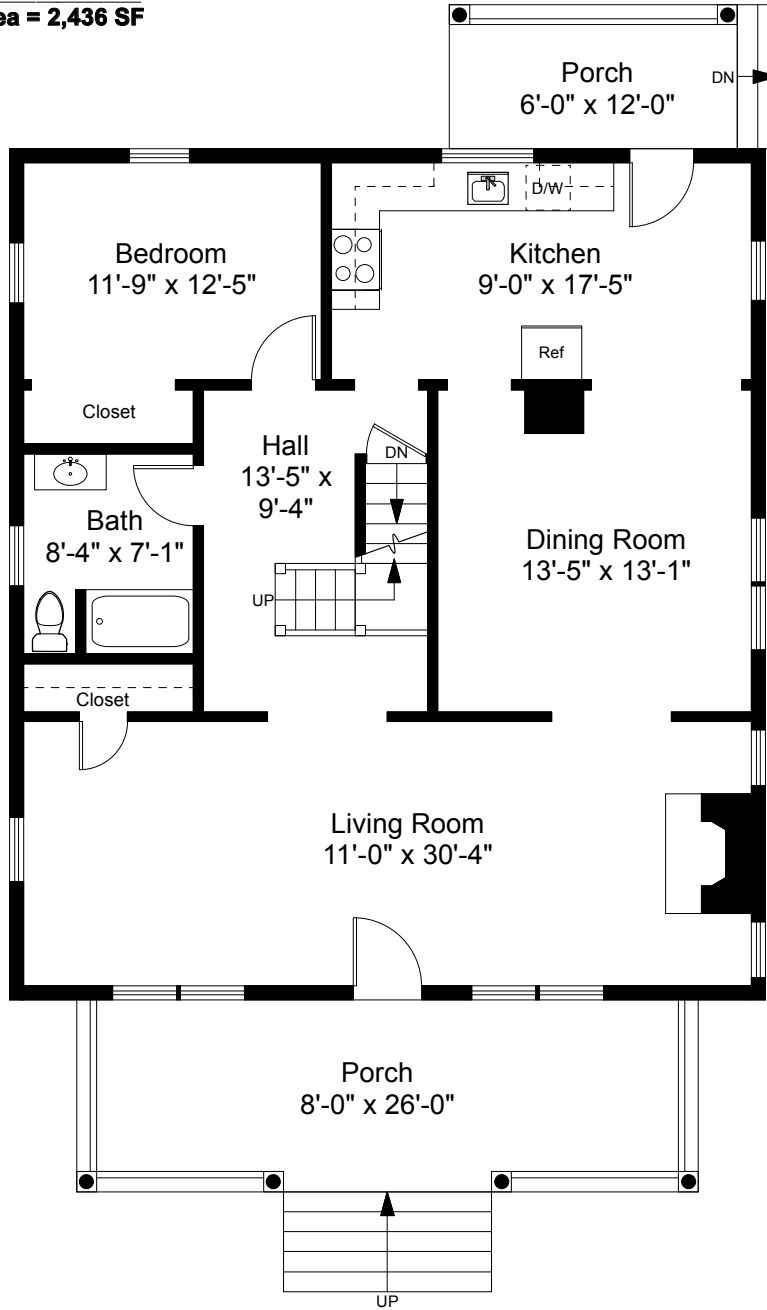
First Floor = 1,116 SF

Second Floor = 905 SF

Total Above Grade Living Area = 2,021 SF

Lower Level Finished Area = 415 SF

Total Gross Living Area = 2,436 SF



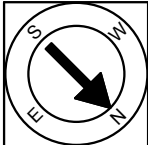
First Floor Plan
Ceiling Height = 9'-0"



Scale 1/8" = 1'-0"

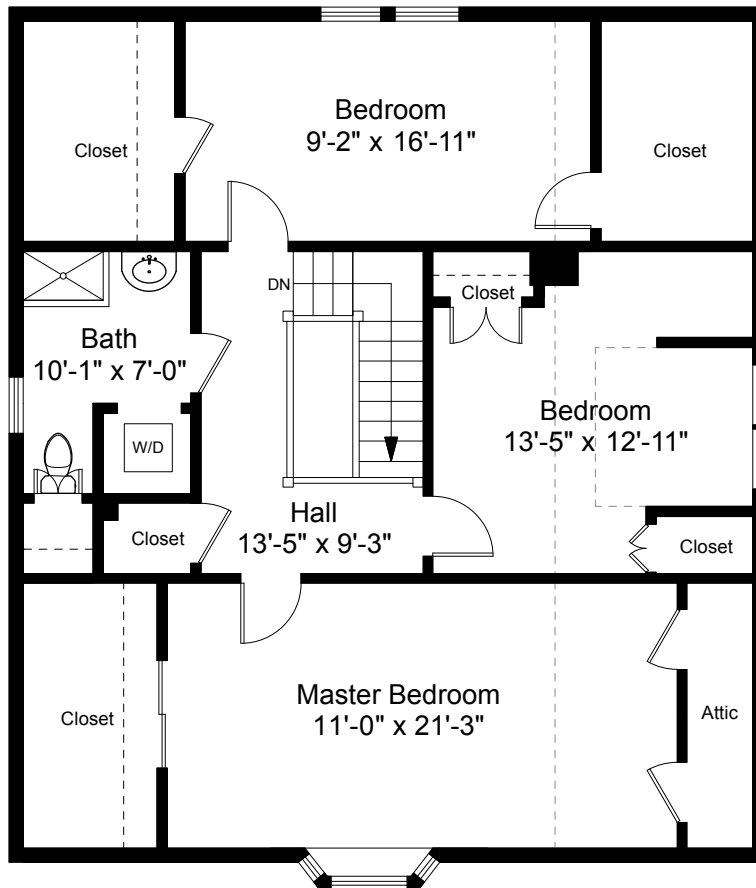
61 Overhill Road
Providence, RI 02906

1



Completed: November 2017
Note: Dimensions are not guaranteed and are provided for informational purposes only. Individual room dimensions are not used to calculate overall square footage.

NATIONAL
FLOOR PLANS
& PHOTOGRAPHY
(800) 328-0217



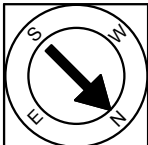
Second Floor Plan
Ceiling Height = 8'-4"

61 Overhill Road
Providence, RI 02906



Scale 1/8" = 1'-0"

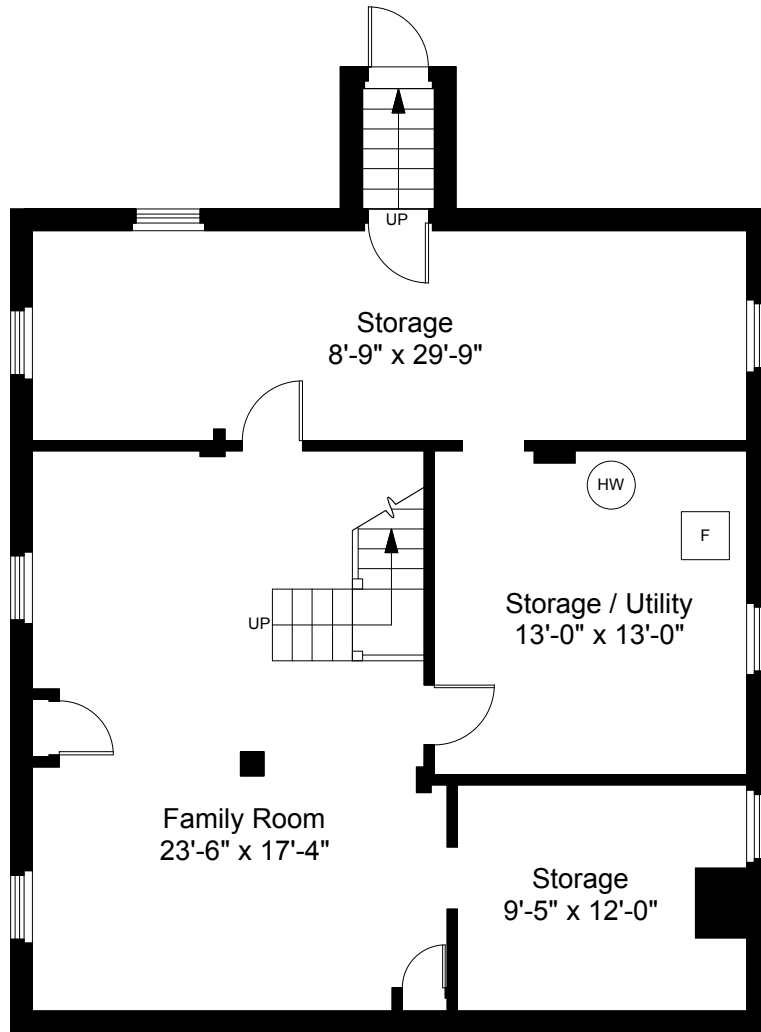
2



Completed: November 2017

Note: Dimensions are not guaranteed and are provided for informational purposes only. Individual room dimensions are not used to calculate overall square footage.

NATIONAL
—FLOOR PLANS—
& PHOTOGRAPHY
(800) 328-0217



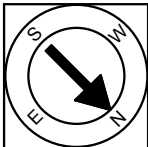
Lower Level Plan
Ceiling Height = 7'-0"

61 Overhill Road
Providence, RI 02906



Scale 1/8" = 1'-0"

3



Completed: November 2017

Note: Dimensions are not guaranteed and are provided for informational purposes only. Individual room dimensions are not used to calculate overall square footage.

NATIONAL
— FLOOR PLANS —
& PHOTOGRAPHY
(800) 328-0217