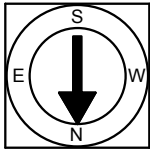


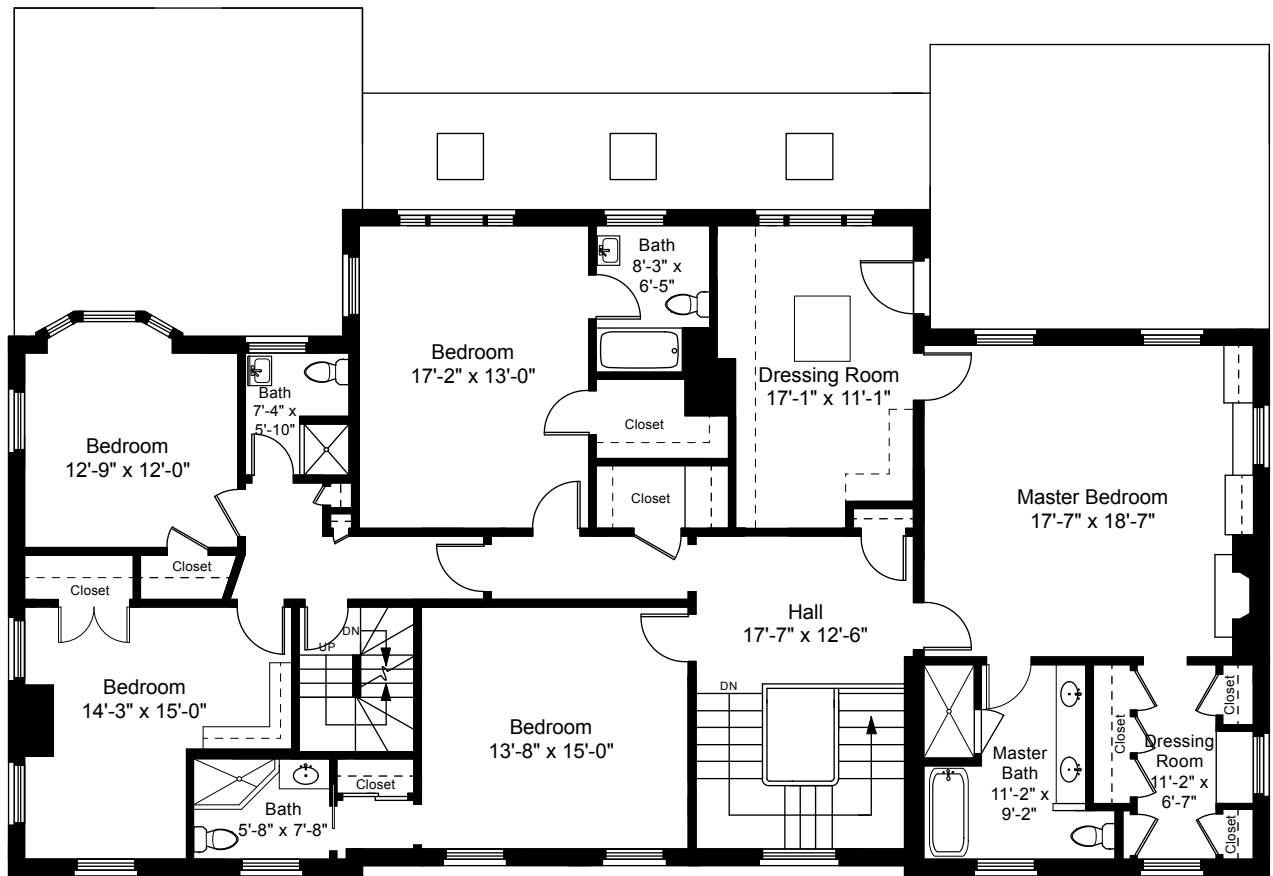
1



Completed: February 2018

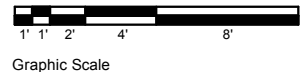
Note: Dimensions are not guaranteed and are provided for informational purposes only. Individual room dimensions are not used to calculate overall square footage.

NATIONAL
FLOOR PLANS
& PHOTOGRAPHY
(800) 328-0217

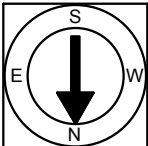


Second Floor Plan
Ceiling Height = 8'-8"

59 Manning Street
Providence, RI 02906



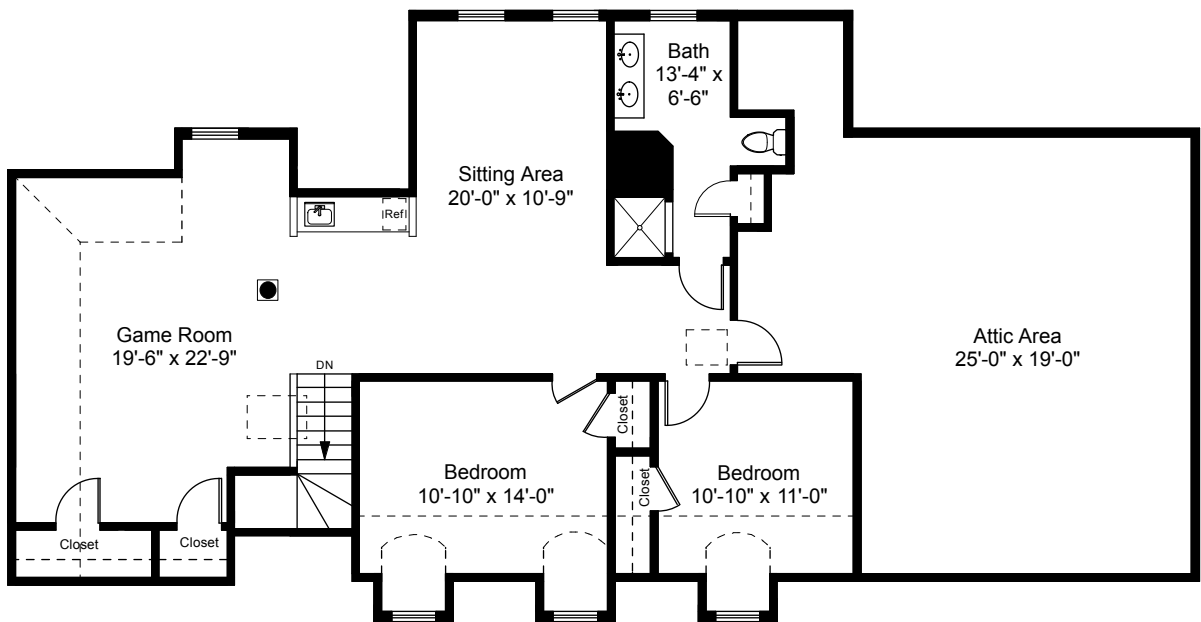
2



Completed: February 2018

Note: Dimensions are not guaranteed and are provided for informational purposes only. Individual room dimensions are not used to calculate overall square footage.

NATIONAL
FLOOR PLANS
& PHOTOGRAPHY
(800) 328-0217



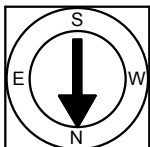
Third Floor Plan
Ceiling Height = 7'-6"

59 Manning Street
Providence, RI 02906



Graphic Scale

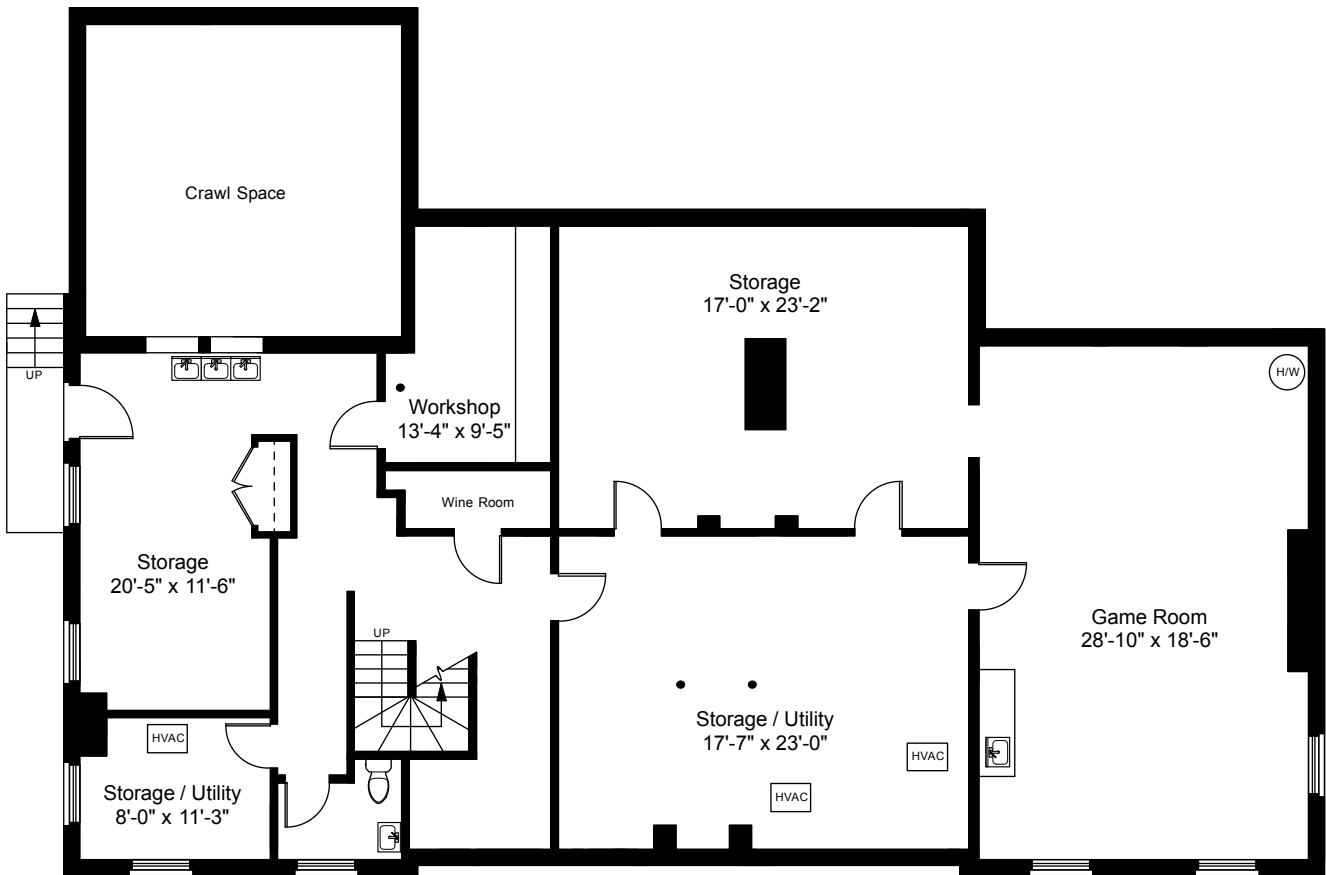
3



Completed: February 2018

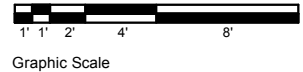
Note: Dimensions are not guaranteed and are provided for informational purposes only. Individual room dimensions are not used to calculate overall square footage.

NATIONAL
FLOOR PLANS
& PHOTOGRAPHY
(800) 328-0217

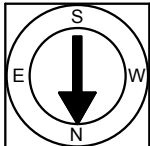


Basement Plan
Ceiling Height = 7'-2"

59 Manning Street
Providence, RI 02906



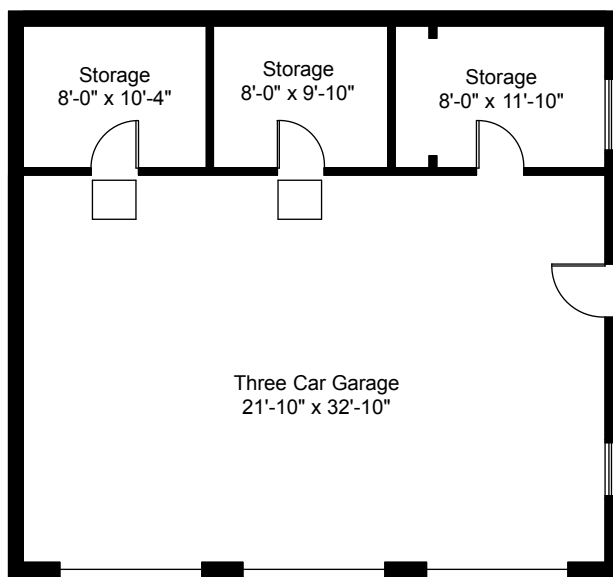
4



Completed: February 2018

Note: Dimensions are not guaranteed and are provided for informational purposes only. Individual room dimensions are not used to calculate overall square footage.

NATIONAL
FLOOR PLANS
& PHOTOGRAPHY
(800) 328-0217



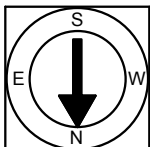
Garage Floor Plan
Ceiling Height = 11'-8"

59 Manning Street
Providence, RI 02906



Graphic Scale

5



Completed: February 2018

Note: Dimensions are not guaranteed and are provided for informational purposes only. Individual room dimensions are not used to calculate overall square footage.

NATIONAL
FLOOR PLANS
& PHOTOGRAPHY
(800) 328-0217