

Square Footage Calculations

First Floor = 2,725 SF

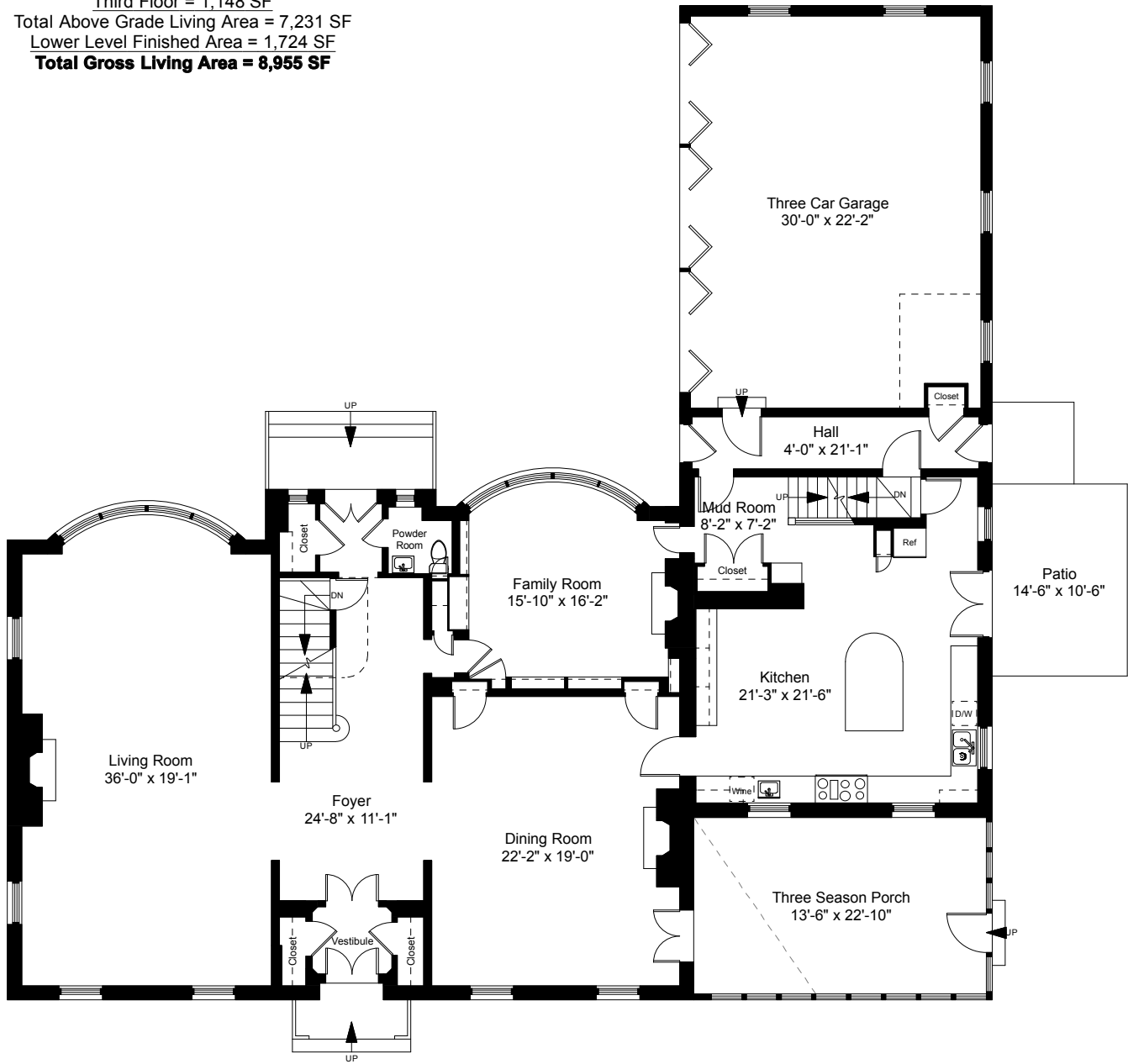
Second Floor = 3,358 SF

Third Floor = 1,148 SF

Total Above Grade Living Area = 7,231 SF

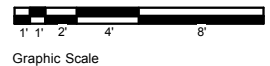
Lower Level Finished Area = 1,724 SF

Total Gross Living Area = 8,955 SF

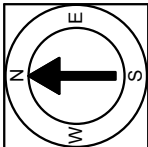


First Floor Plan
Ceiling Height = 10'-6"

45 Balton Road
Providence, RI 02906



1



Completed: July 2018

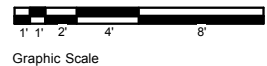
Note: Dimensions are not guaranteed and are provided for informational purposes only. Individual room dimensions are not used to calculate overall square footage.

NATIONAL
—FLOOR PLANS—
& PHOTOGRAPHY
(800) 328-0217

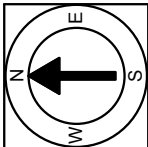


Second Floor Plan
Ceiling Height = 9'-6"

45 Balton Road
Providence, RI 02906



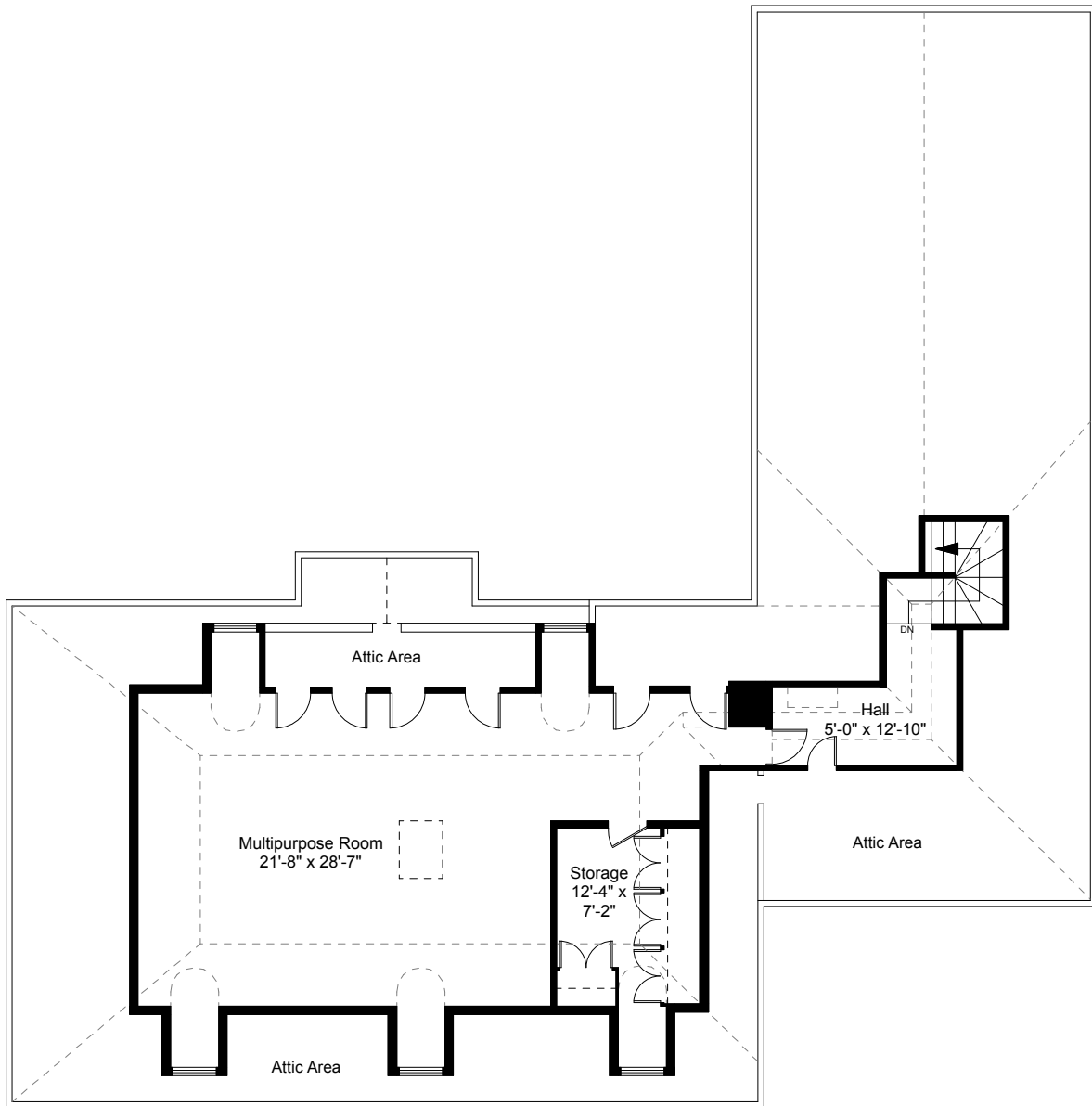
2



Completed: July 2018

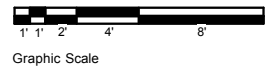
Note: Dimensions are not guaranteed and are provided for informational purposes only. Individual room dimensions are not used to calculate overall square footage.

NATIONAL
FLOOR PLANS
& PHOTOGRAPHY
(800) 328-0217

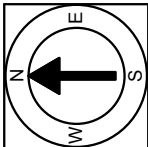


Third Floor Plan
 Ceiling Height = 8'-10"

45 Balton Road
 Providence, RI 02906



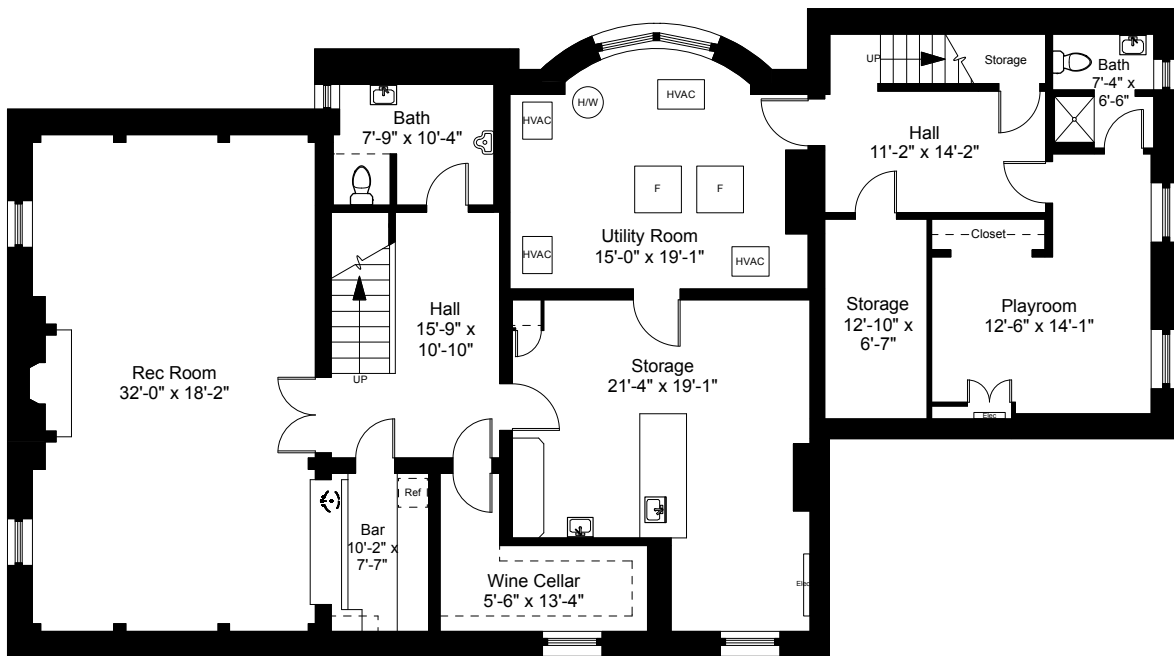
3



Completed: July 2018

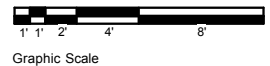
Note: Dimensions are not guaranteed and are provided for informational purposes only. Individual room dimensions are not used to calculate overall square footage.

NATIONAL
 FLOOR PLANS
 & PHOTOGRAPHY
 (800) 328-0217

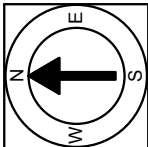


Lower Level Plan
Ceiling Height = 9'-3"

45 Balton Road
Providence, RI 02906



4



Completed: July 2018

Note: Dimensions are not guaranteed and are provided for informational purposes only. Individual room dimensions are not used to calculate overall square footage.

NATIONAL
FLOOR PLANS
& PHOTOGRAPHY
(800) 328-0217