

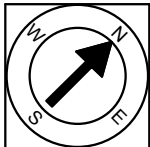
First Floor Plan
Ceiling Height = 7'-4"

44 Narragansett Road
Portsmouth, RI 02871



Scale 1/8" = 1'-0"

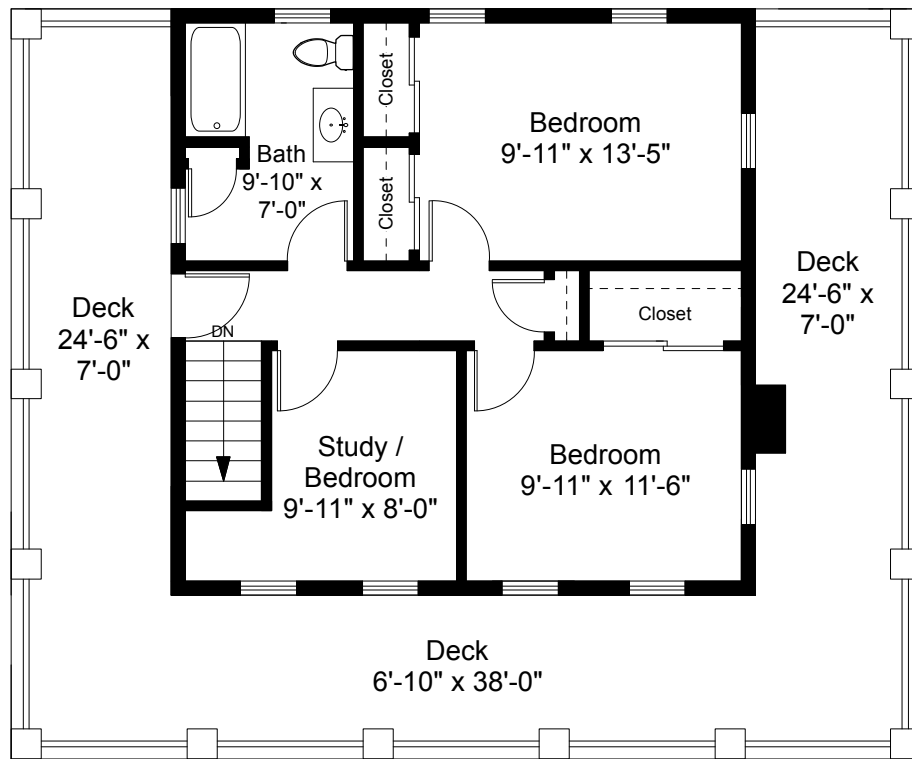
1



Completed: April 2016

Note: Dimensions are not guaranteed and are provided for informational purposes only. Individual room dimensions are not used to calculate overall square footage.

NATIONAL
—FLOOR PLANS—
& PHOTOGRAPHY
(800) 328-0217



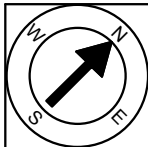
Second Floor Plan
Ceiling Height = 7'-1"

44 Narragansett Road
Portsmouth, RI 02871



Scale 1/8" = 1'-0"

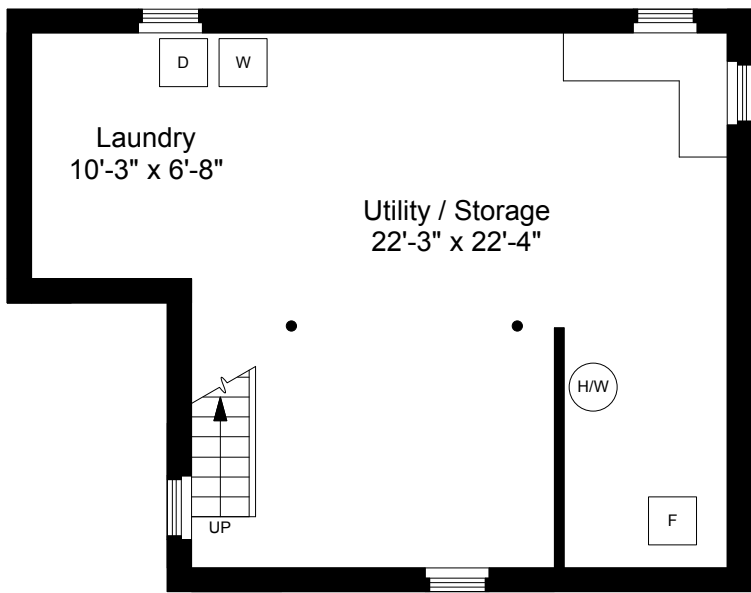
2



Completed: April 2016

Note: Dimensions are not guaranteed and are provided for informational purposes only. Individual room dimensions are not used to calculate overall square footage.

NATIONAL
—FLOOR PLANS—
& PHOTOGRAPHY
(800) 328-0217



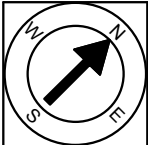
Basement Plan
Ceiling Height = 6'-11"

44 Narragansett Road
Portsmouth, RI 02871



Scale 1/8" = 1'-0"

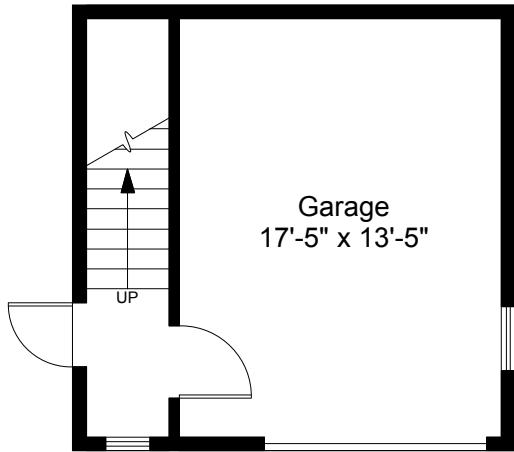
3



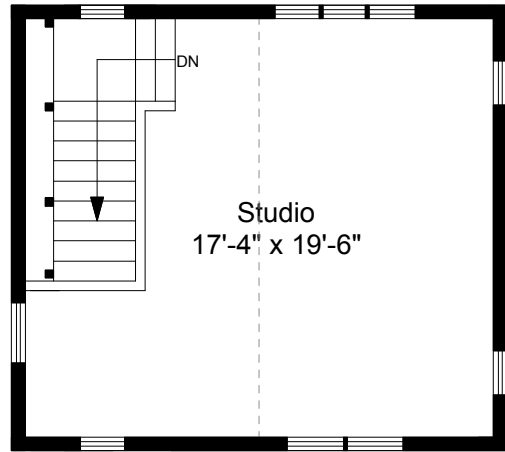
Completed: April 2016

Note: Dimensions are not guaranteed and are provided for informational purposes only. Individual room dimensions are not used to calculate overall square footage.

NATIONAL
—FLOOR PLANS—
& PHOTOGRAPHY
(800) 328-0217



Garage - First Floor Plan
Ceiling Height = 8'-2"



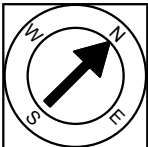
Garage - Second Floor Plan
Ceiling Height = 9'-8"

44 Narragansett Road
Portsmouth, RI 02871



Scale 1/8" = 1'-0"

4



Completed: April 2016

Note: Dimensions are not guaranteed and are provided for informational purposes only. Individual room dimensions are not used to calculate overall square footage.

NATIONAL
—FLOOR PLANS—
& PHOTOGRAPHY
(800) 328-0217