

**Square Footage Calculations**

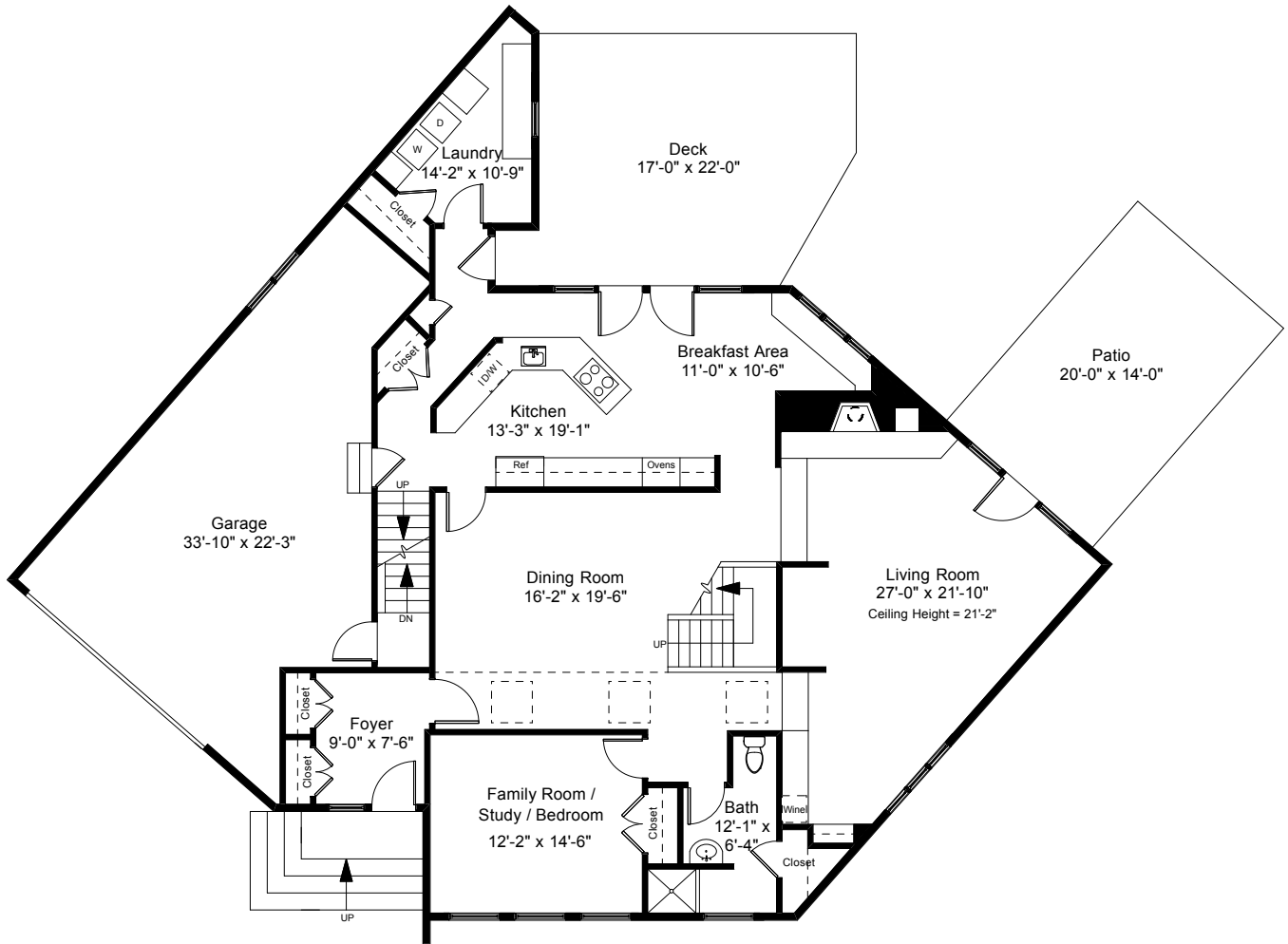
First Floor = 1,916 SF

Second Floor = 1,556 SF

Total Above Grade Living Area = 3,472 SF

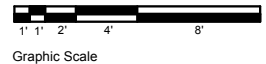
Lower Level Finished Area = 580 SF

**Total Gross Living Area = 4,052 SF**

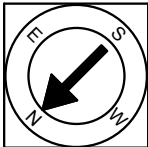


First Floor Plan  
Ceiling Height = 9'-0"

27 Loring Avenue  
Providence, RI 02906



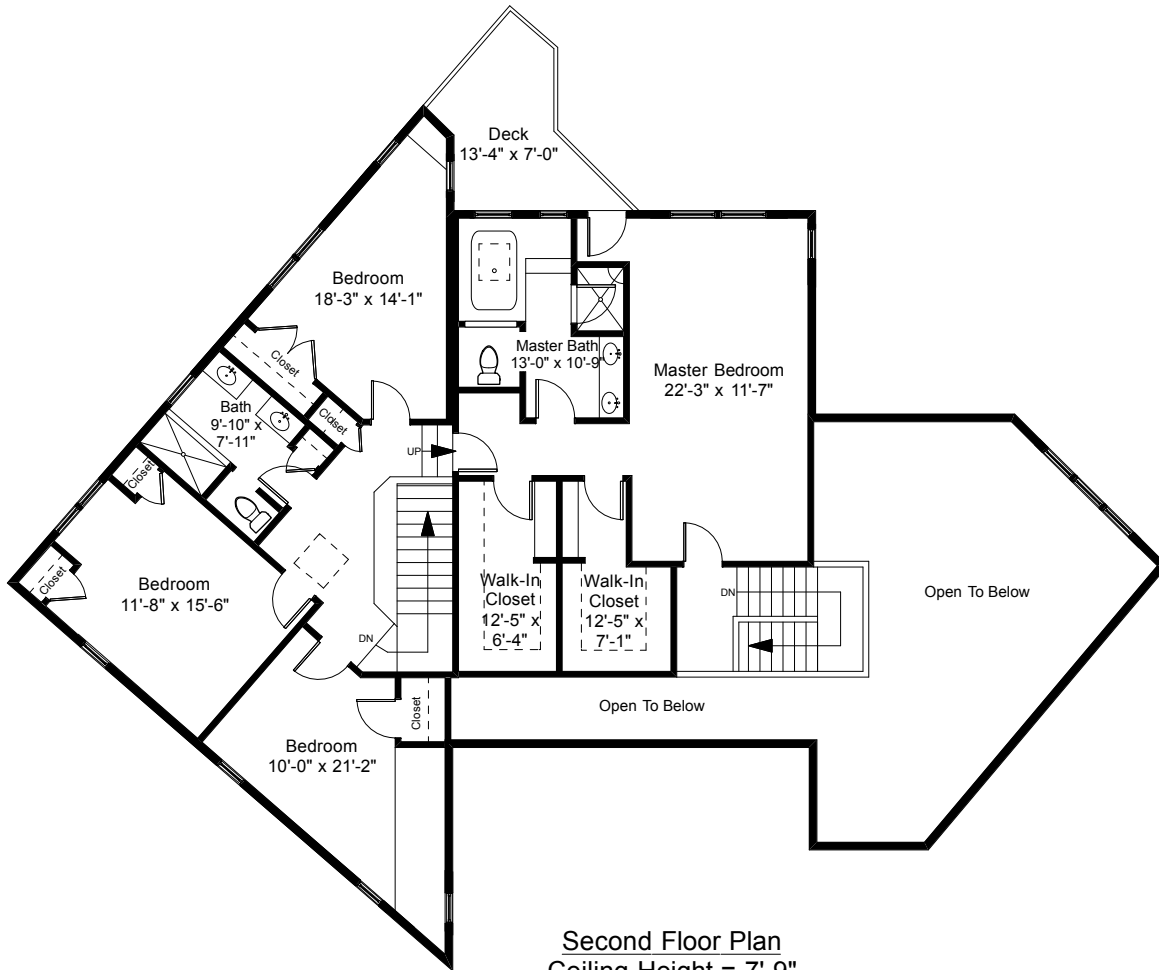
1



Completed: August 2018

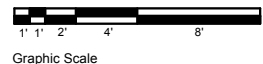
Note: Dimensions are not guaranteed and are provided for informational purposes only. Individual room dimensions are not used to calculate overall square footage.

**NATIONAL**  
FLOOR PLANS  
& PHOTOGRAPHY  
(800) 328-0217

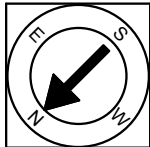


Second Floor Plan  
Ceiling Height = 7'-9"

27 Loring Avenue  
Providence, RI 02906

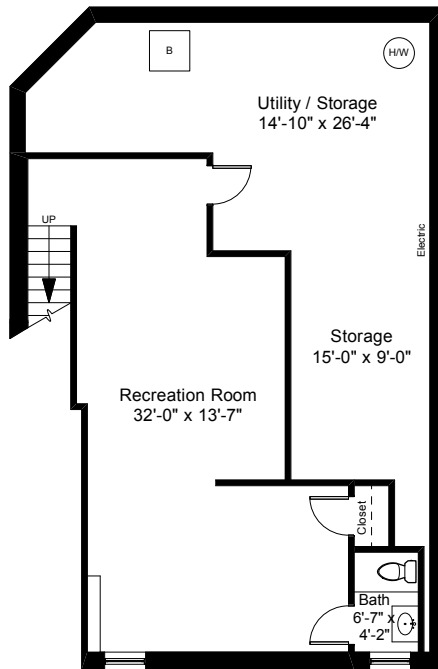


2



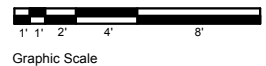
Completed: August 2018  
 Note: Dimensions are not guaranteed and are provided for informational purposes only. Individual room dimensions are not used to calculate overall square footage.

NATIONAL  
FLOOR PLANS  
& PHOTOGRAPHY  
(800) 328-0217

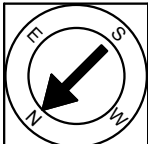


Lower Level Plan  
Ceiling Height = 7'-2"

27 Loring Avenue  
Providence, RI 02906



3



Completed: August 2018

Note: Dimensions are not guaranteed and are provided for informational purposes only. Individual room dimensions are not used to calculate overall square footage.

NATIONAL  
— FLOOR PLANS —  
& PHOTOGRAPHY  
(800) 328-0217