

Square Footage Calculations
 First Floor = 1,052 SF
 Second Floor = 670 SF
Total Gross Living Area = 1,722 SF

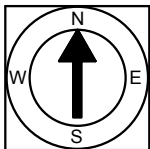


Scale 1/8" = 1'-0"

65 Waite Avenue
 Cranston, RI 02905

First Floor Plan
 Ceiling Height = 7'-10"

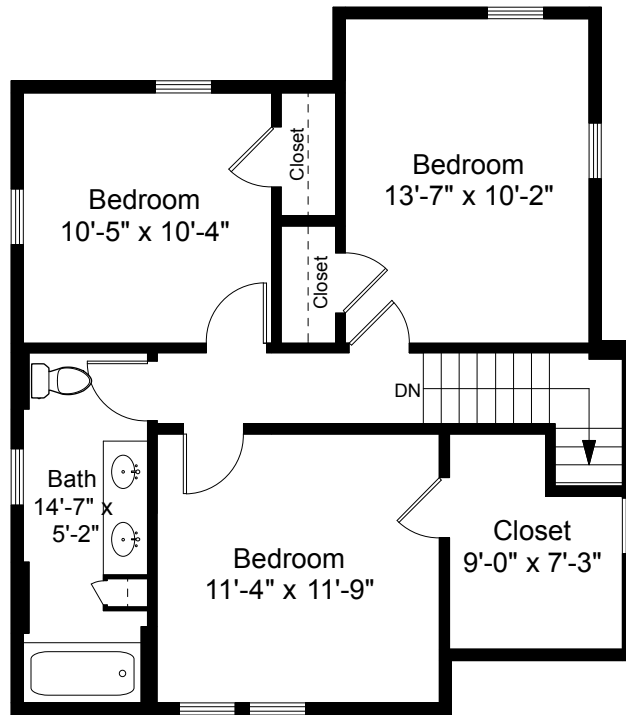
1



Completed: August 2018

Note: Dimensions are not guaranteed and are provided for informational purposes only. Individual room dimensions are not used to calculate overall square footage.

NATIONAL
 FLOOR PLANS
 & PHOTOGRAPHY
 (800) 328-0217



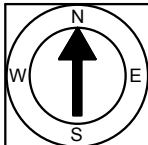
Second Floor Plan
Ceiling Height = 7'-11"

65 Waite Avenue
Cranston, RI 02905



Scale 1/8" = 1'-0"

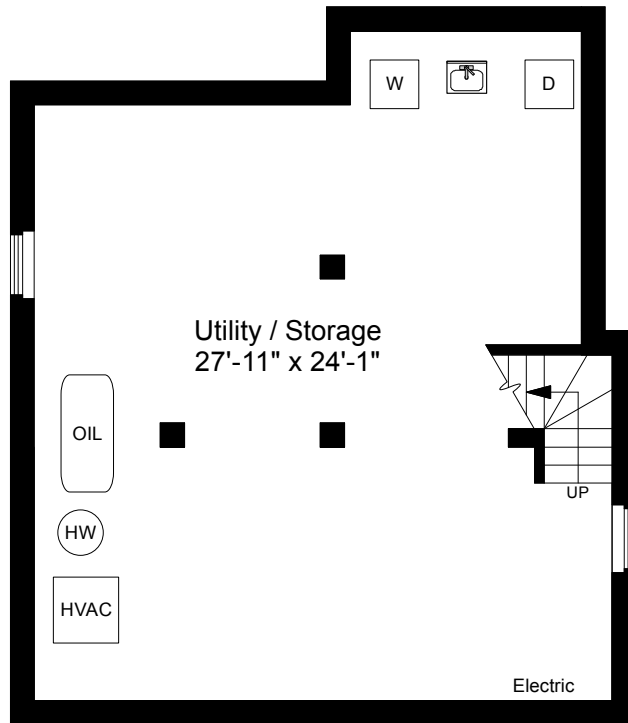
2



Completed: August 2018

Note: Dimensions are not guaranteed and are provided for informational purposes only. Individual room dimensions are not used to calculate overall square footage.

NATIONAL
—FLOOR PLANS—
& PHOTOGRAPHY
(800) 328-0217



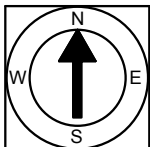
Basement Plan
 Ceiling Height = 6'-11"

65 Waite Avenue
 Cranston, RI 02905



Scale 1/8" = 1'-0"

3



Completed: August 2018

Note: Dimensions are not guaranteed and are provided for informational purposes only. Individual room dimensions are not used to calculate overall square footage.

NATIONAL
 FLOOR PLANS
 & PHOTOGRAPHY
 (800) 328-0217