

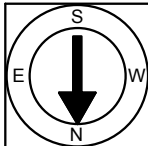
First Floor Plan
 Ceiling Height = 8'-0"
 Total Gross Living Area = 1,607 SF

40 Wriston Drive
 Providence, RI 02906



Scale 1" = 10'-0"

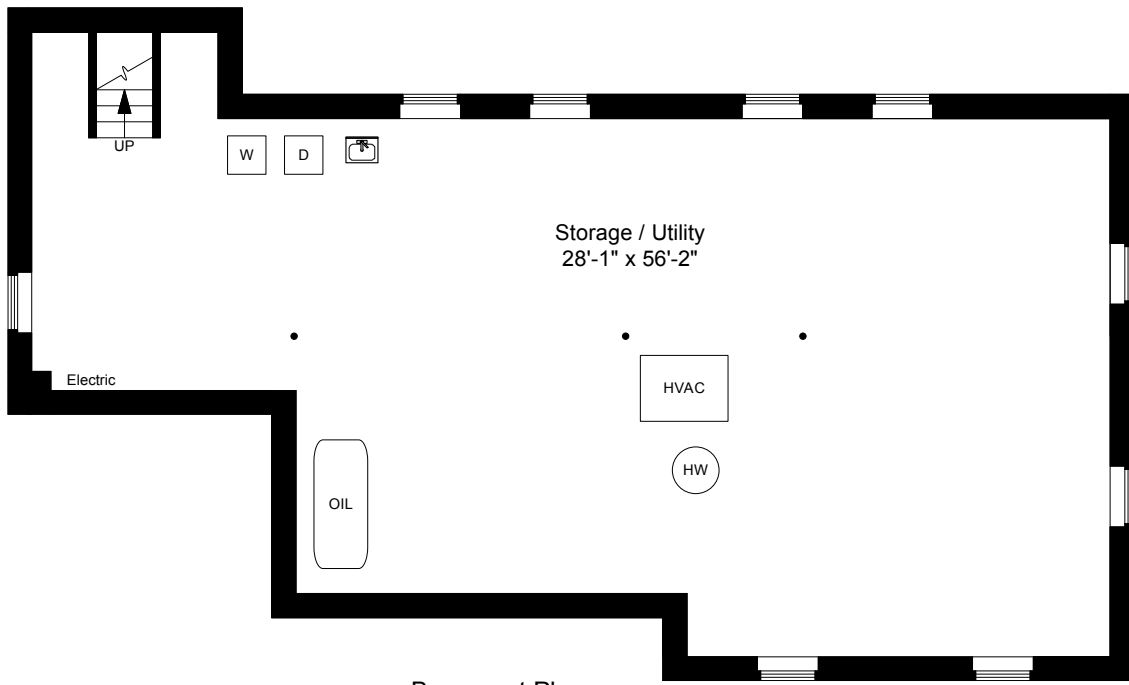
1



Completed: October 2018

Note: Dimensions are not guaranteed and are provided for informational purposes only. Individual room dimensions are not used to calculate overall square footage.

NATIONAL
 FLOOR PLANS
 & PHOTOGRAPHY
 (800) 328-0217



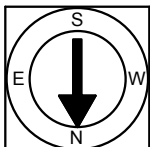
Basement Plan
Ceiling Height = 7'-5"

40 Wriston Drive
Providence, RI 02906



Scale 1" = 10'-0"

2



Completed: October 2018

Note: Dimensions are not guaranteed and are provided for informational purposes only. Individual room dimensions are not used to calculate overall square footage.

NATIONAL
FLOOR PLANS
& PHOTOGRAPHY
(800) 328-0217