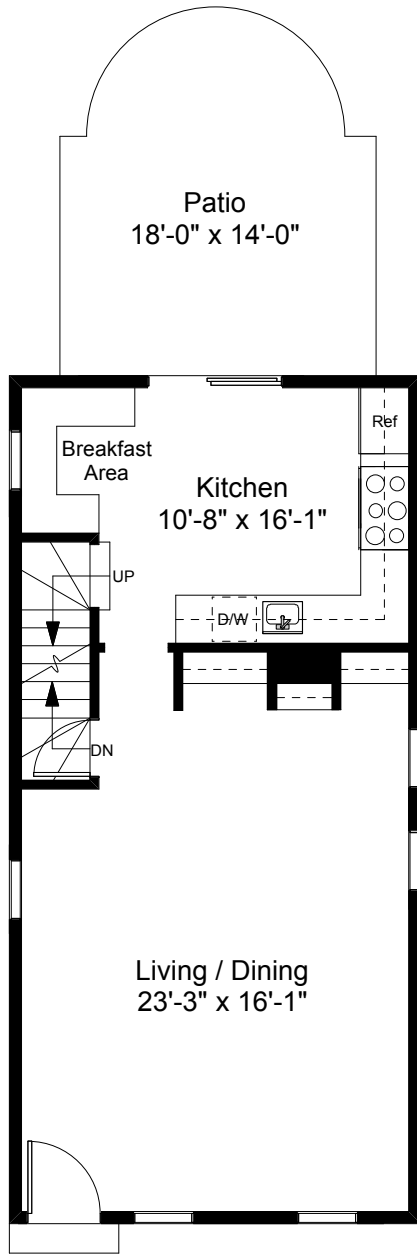
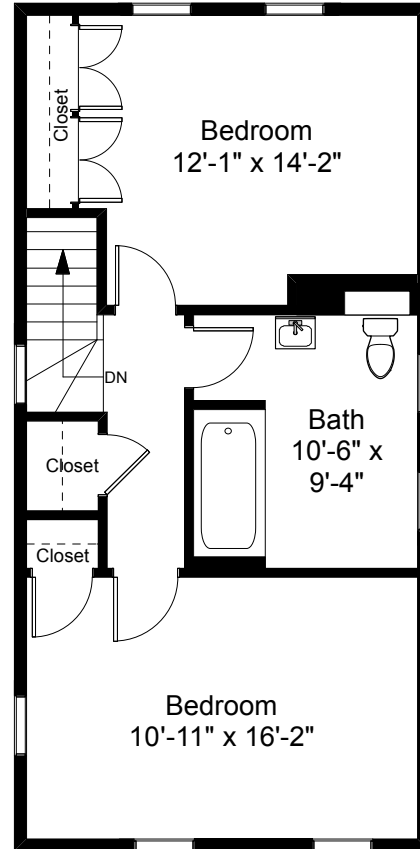


**Square Footage Calculations**  
 First Floor = 608 SF  
 Second Floor = 608 SF  
**Total Gross Living Area = 1,216 SF**



**First Floor Plan**  
 Ceiling Height = 8'-11"



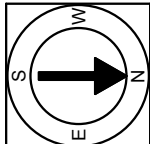
**Second Floor Plan**  
 Ceiling Height = 7'-10"

26 Thayer Street  
 Providence, RI 02906



Scale 1/8" = 1'-0"

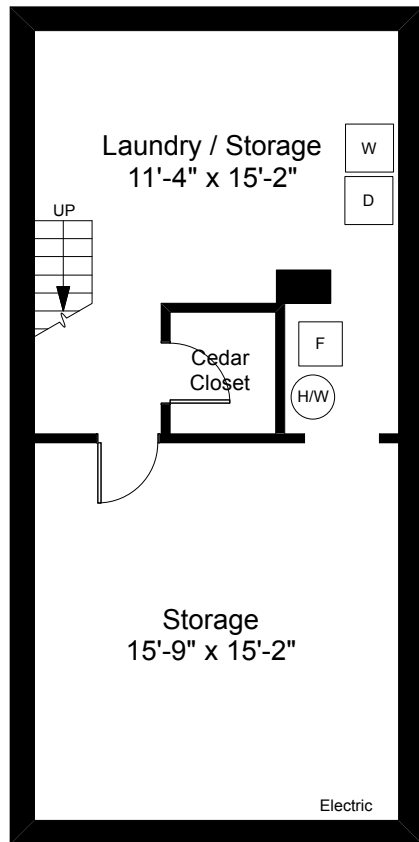
1



**Completed: January 2019**

**Note:** Dimensions are not guaranteed and are provided for informational purposes only. Individual room dimensions are not used to calculate overall square footage.

**NATIONAL**  
 FLOOR PLANS  
 & PHOTOGRAPHY  
 (800) 328-0217



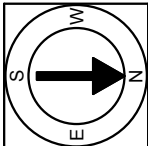
**Basement Plan**  
Ceiling Height = 6'-1"

26 Thayer Street  
Providence, RI 02906



Scale 1/8" = 1'-0"

2



Completed: January 2019

Note: Dimensions are not guaranteed and are provided for informational purposes only. Individual room dimensions are not used to calculate overall square footage.

**NATIONAL**  
—FLOOR PLANS—  
& PHOTOGRAPHY  
(800) 328-0217