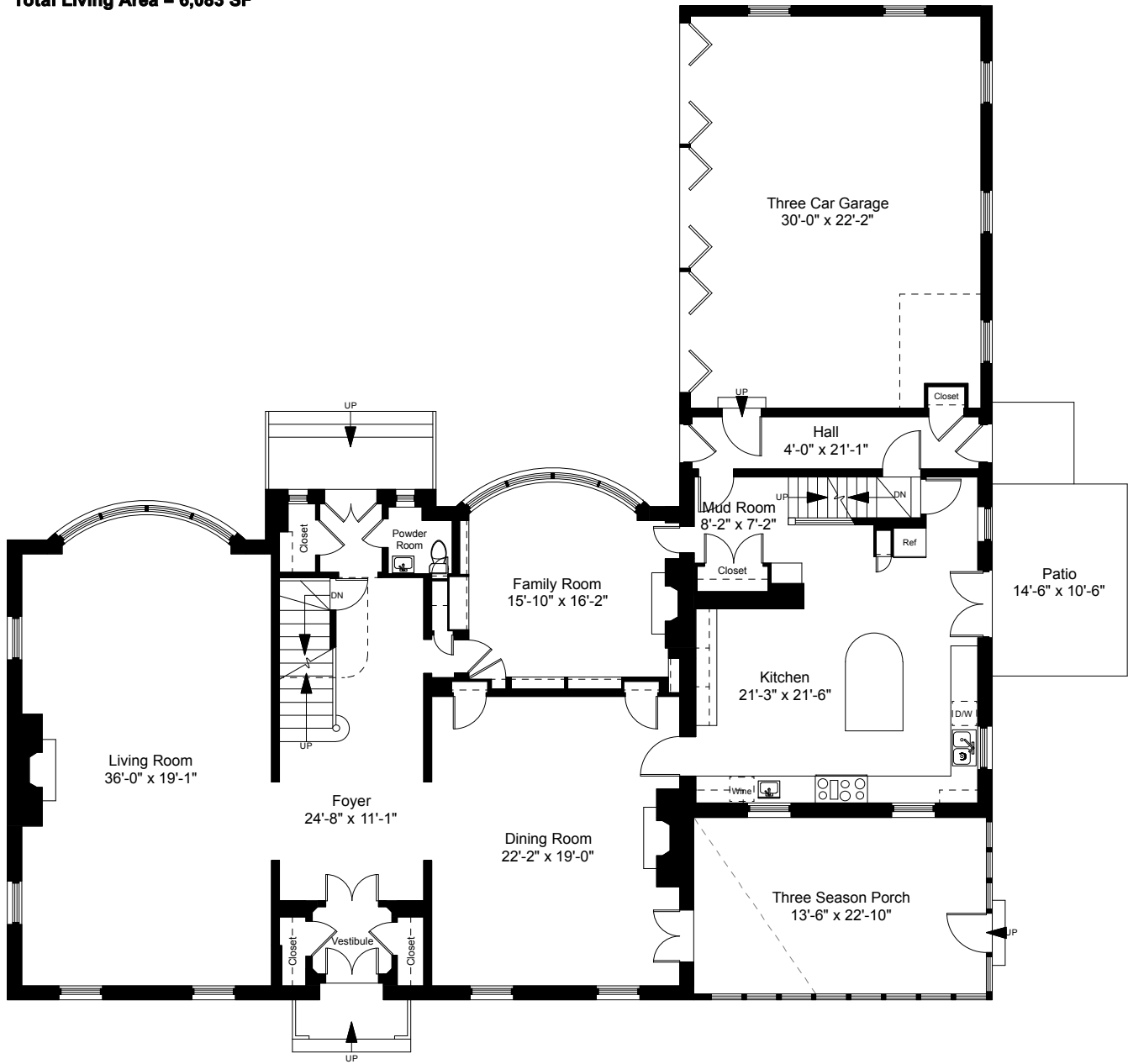


Square Footage Calculations

First Floor = 2,725 SF

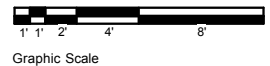
Second Floor = 3,358 SF

Total Living Area = 6,083 SF

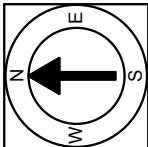


First Floor Plan
Ceiling Height = 10'-6"

45 Balton Road
Providence, RI 02906



1



Completed: July 2018

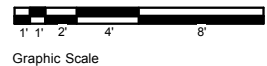
Note: Dimensions are not guaranteed and are provided for informational purposes only. Individual room dimensions are not used to calculate overall square footage.

NATIONAL
FLOOR PLANS
& PHOTOGRAPHY
(800) 328-0217

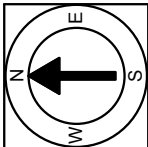


Second Floor Plan
Ceiling Height = 9'-6"

45 Balton Road
Providence, RI 02906



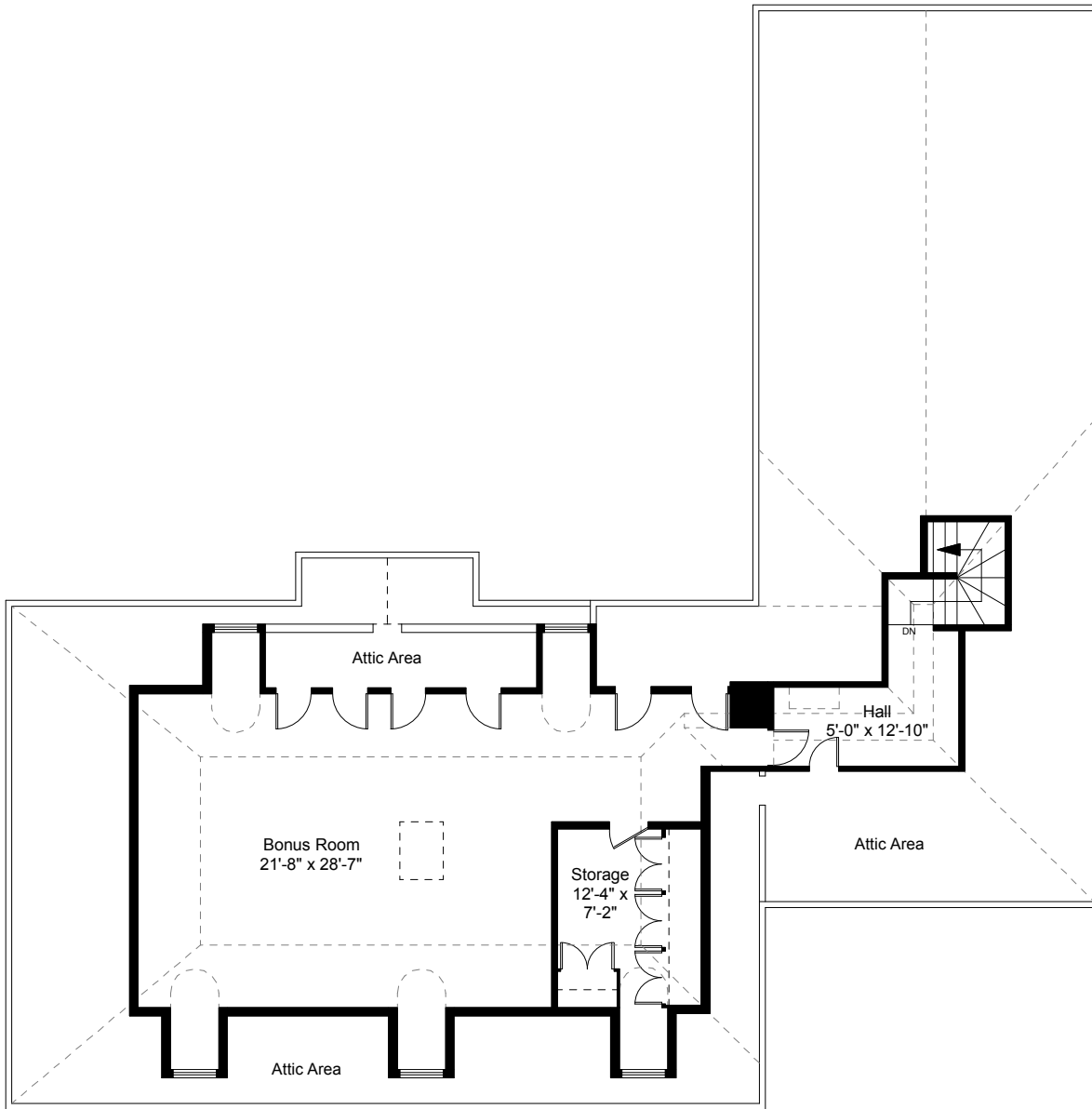
2



Completed: July 2018

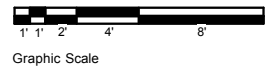
Note: Dimensions are not guaranteed and are provided for informational purposes only. Individual room dimensions are not used to calculate overall square footage.

NATIONAL
FLOOR PLANS
& PHOTOGRAPHY
(800) 328-0217

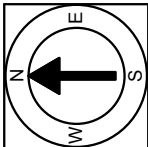


Third Floor Plan
 Ceiling Height = 8'-10"
 Total Area = 1,148 SF

45 Balton Road
 Providence, RI 02906



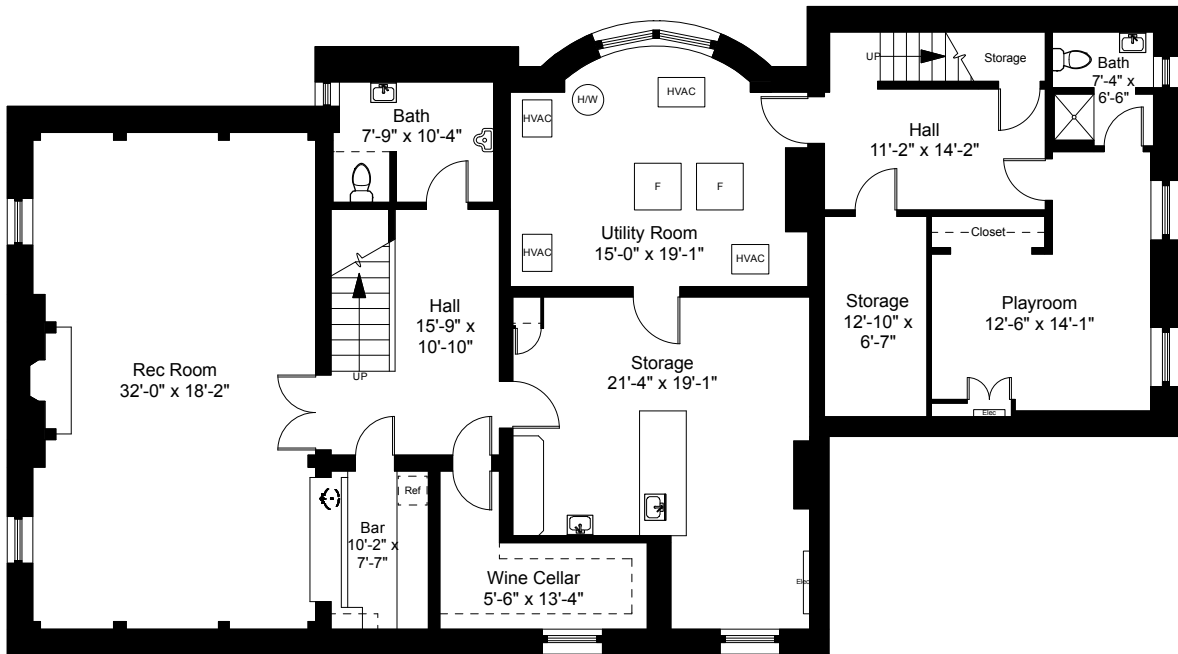
3



Completed: July 2018

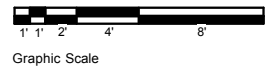
Note: Dimensions are not guaranteed and are provided for informational purposes only. Individual room dimensions are not used to calculate overall square footage.

NATIONAL
 FLOOR PLANS
 & PHOTOGRAPHY
 (800) 328-0217

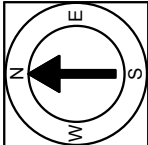


Lower Level Plan
 Ceiling Height = 9'-3"
 Total Finished Area = 1,724 SF

45 Balton Road
 Providence, RI 02906



4



Completed: July 2018
 Note: Dimensions are not guaranteed and are provided for informational purposes only. Individual room dimensions are not used to calculate overall square footage.

NATIONAL
 FLOOR PLANS
 & PHOTOGRAPHY
 (800) 328-0217