

Square Footage Calculations

First Floor = 1,213 SF

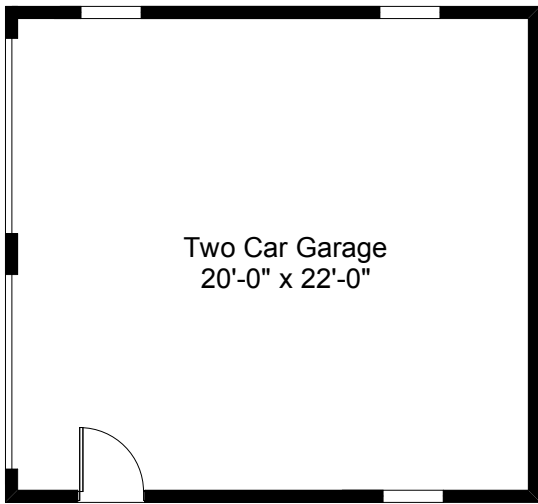
Second Floor = 1,096 SF

Third Floor = 623 SF

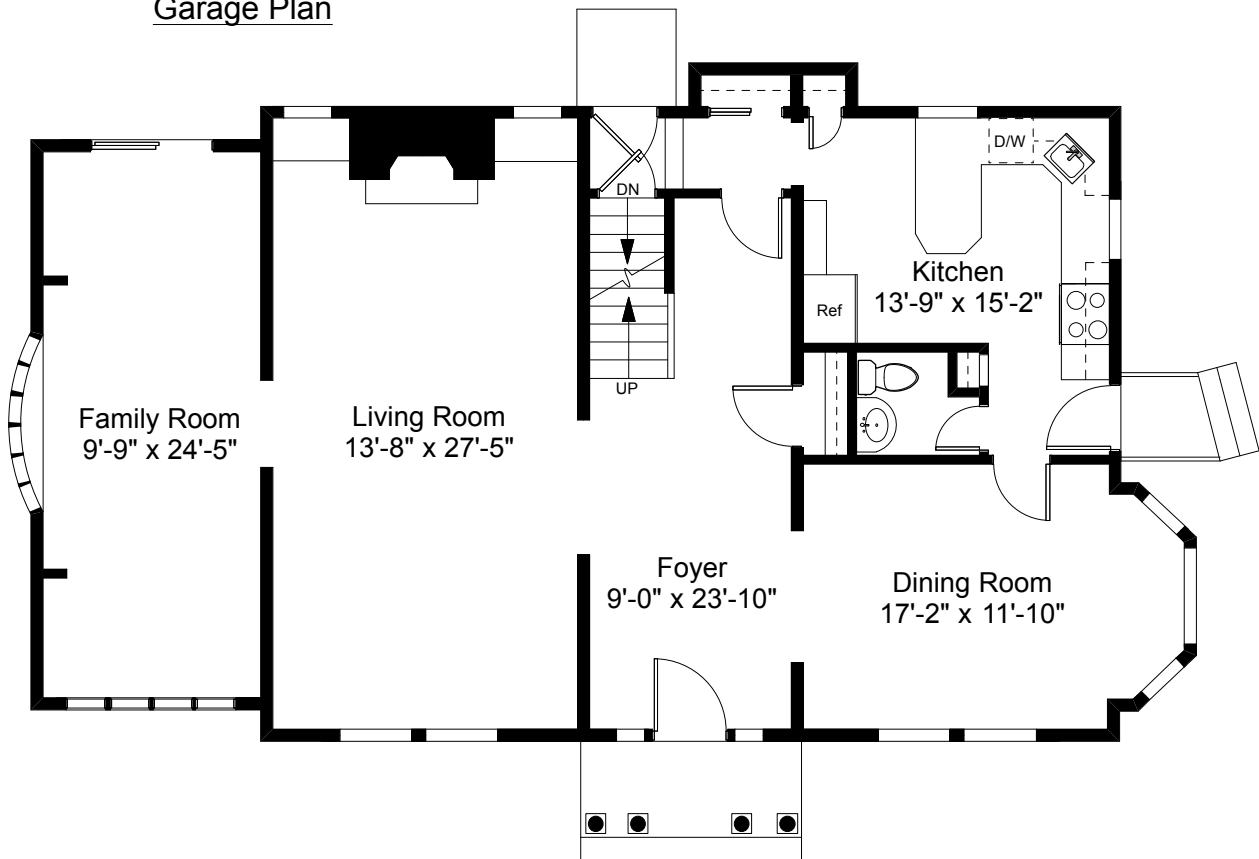
Total Above Grade Living Area = 2,932 SF

Lower Level Finished Area = 681 SF

Total Gross Living Area = 3,613 SF



Garage Plan



First Floor Plan

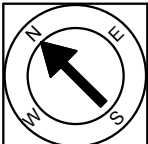
Ceiling Height = 8'-5"

185 Taber Avenue
Providence, RI 02906



Scale 1/8" = 1'-0"

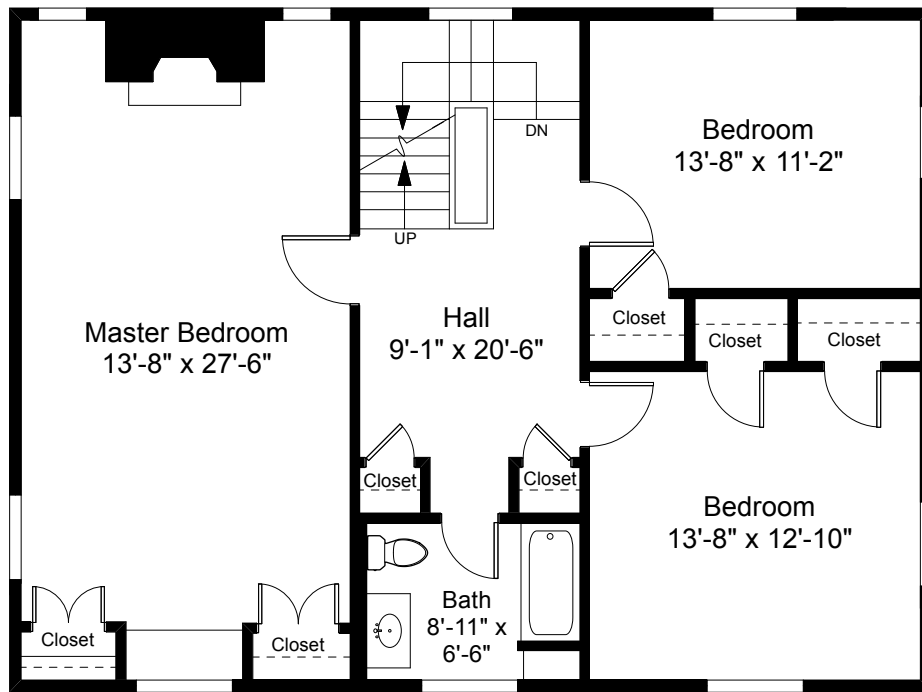
1



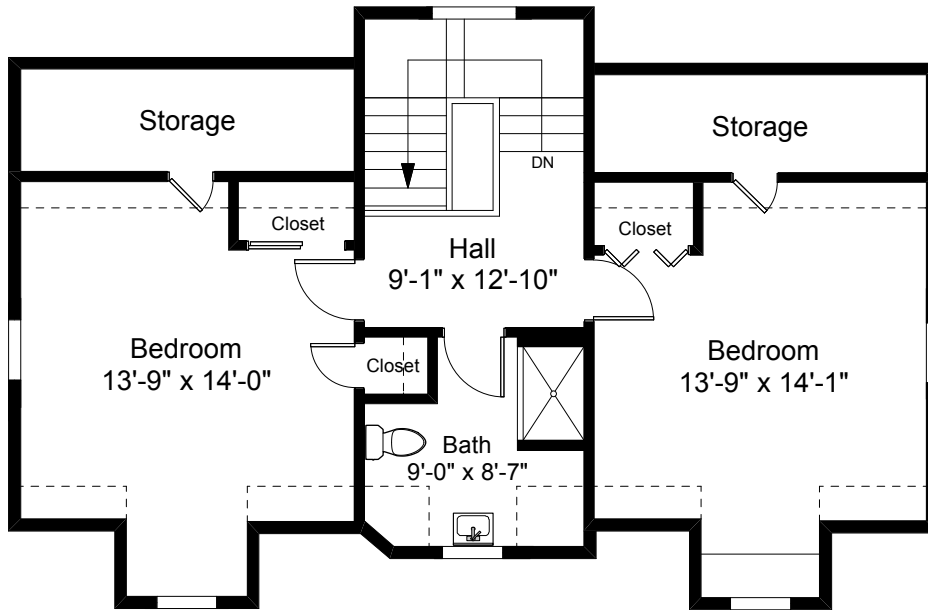
Completed: January 2019

Note: Dimensions are not guaranteed and are provided for informational purposes only. Individual room dimensions are not used to calculate overall square footage.

NATIONAL
FLOOR PLANS
& PHOTOGRAPHY
(800) 328-0217



Second Floor Plan
Ceiling Height = 8'-1"



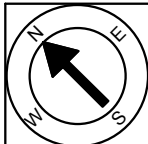
Third Floor Plan
Ceiling Height = 7'-6"

185 Taber Avenue
Providence, RI 02906



Scale 1/8" = 1'-0"

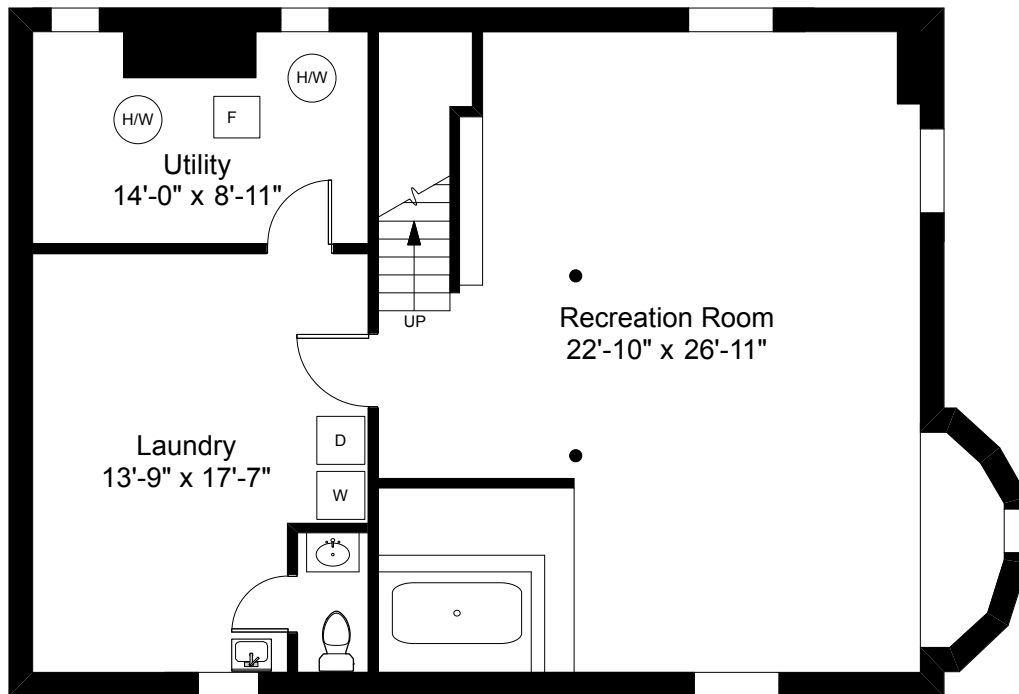
2



Completed: January 2019

Note: Dimensions are not guaranteed and are provided for informational purposes only. Individual room dimensions are not used to calculate overall square footage.

NATIONAL
FLOOR PLANS
& PHOTOGRAPHY
(800) 328-0217



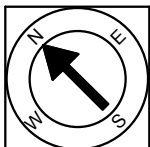
Lower Level Plan
Ceiling Height = 7'-8"

185 Taber Avenue
Providence, RI 02906



Scale 1/8" = 1'-0"

3



Completed: January 2019

Note: Dimensions are not guaranteed and are provided for informational purposes only. Individual room dimensions are not used to calculate overall square footage.

NATIONAL
—FLOOR PLANS—
& PHOTOGRAPHY
(800) 328-0217