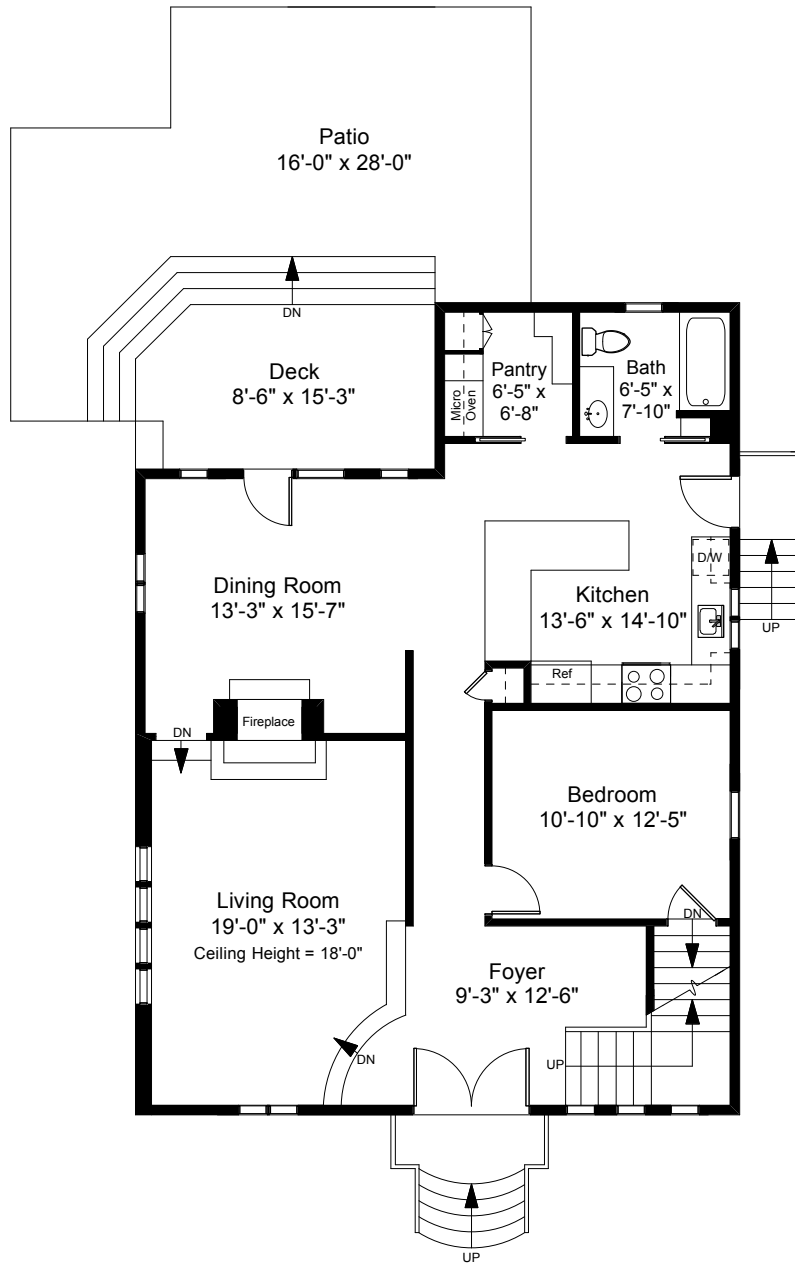


Square Footage Calculations

First Floor = 1,195 SF

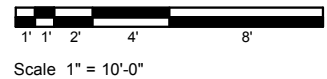
Second Floor = 774 SF

Total Gross Living Area = 1,969 SF

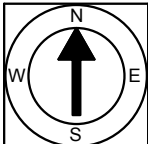


First Floor Plan
Ceiling Height = 8'-0"

224 Doyle Avenue
Providence, RI 02906



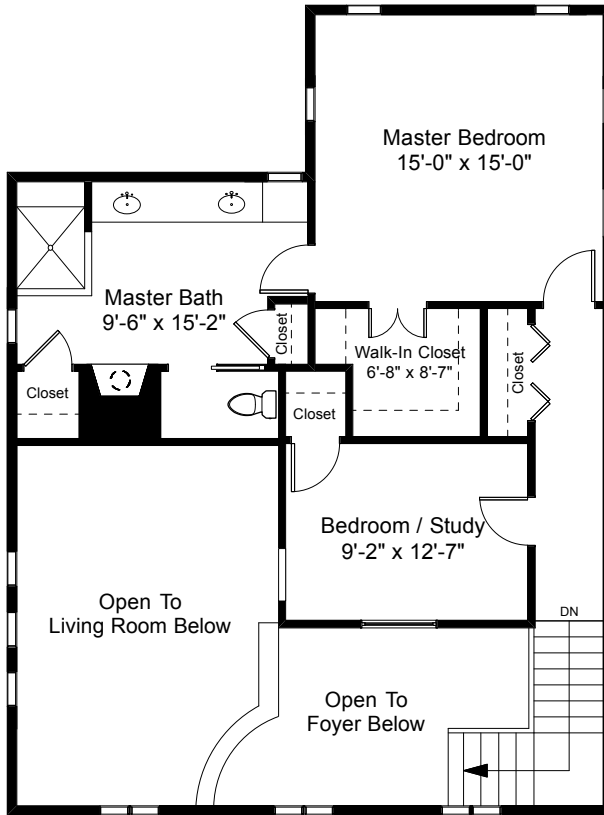
1



Completed: February 2019

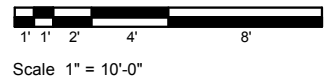
Note: Dimensions are not guaranteed and are provided for informational purposes only. Individual room dimensions are not used to calculate overall square footage.

NATIONAL
FLOOR PLANS
& PHOTOGRAPHY
(800) 328-0217

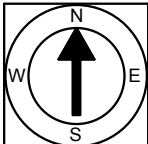


Second Floor Plan
Ceiling Height = 8'-0"

224 Doyle Avenue
Providence, RI 02906



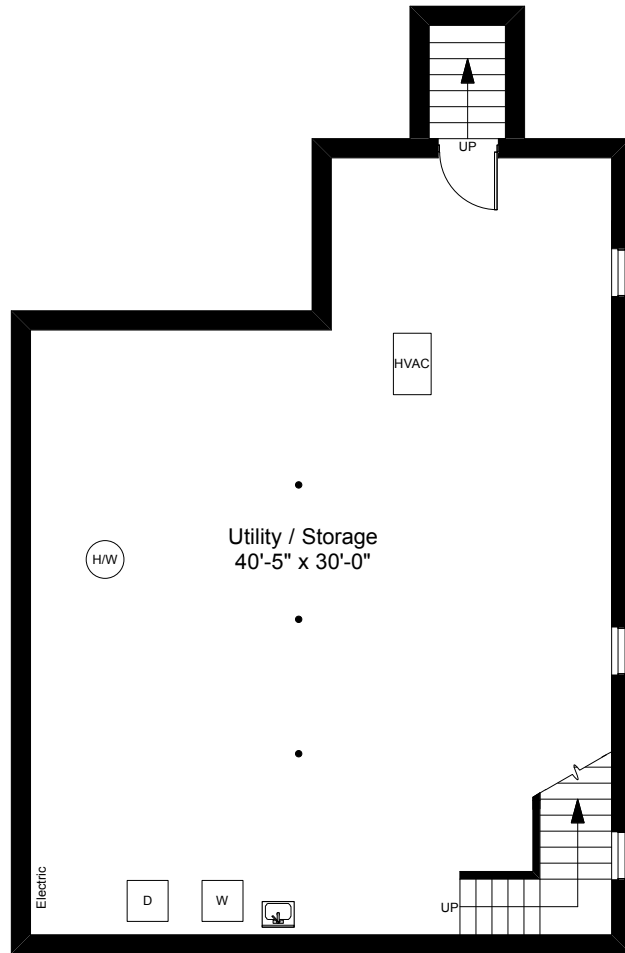
2



Completed: February 2019

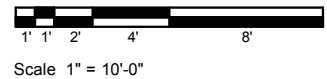
Note: Dimensions are not guaranteed and are provided for informational purposes only. Individual room dimensions are not used to calculate overall square footage.

NATIONAL
— FLOOR PLANS —
& PHOTOGRAPHY
(800) 328-0217

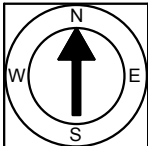


Basement Plan
Ceiling Height = 7'-7"

224 Doyle Avenue
Providence, RI 02906



3



Completed: February 2019
 Note: Dimensions are not guaranteed and are provided for informational purposes only. Individual room dimensions are not used to calculate overall square footage.

The logo features the word 'NATIONAL' in a large, blue, serif font. Below it, 'FLOOR PLANS & PHOTOGRAPHY' is written in a smaller, blue, sans-serif font. At the bottom, the phone number '(800) 328-0217' is displayed. To the left of the text is a graphic of three overlapping squares in blue, green, and red.