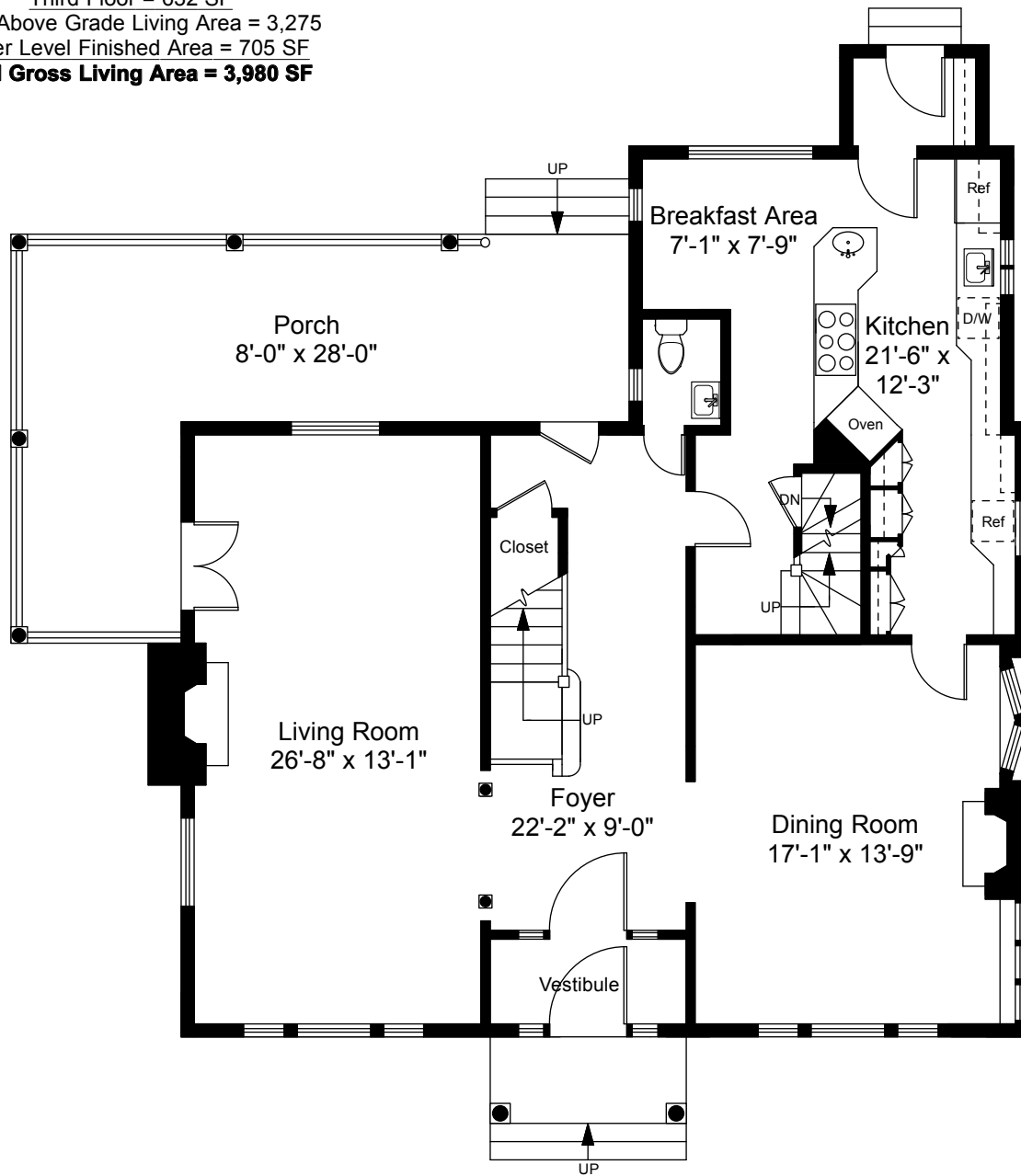


Square Footage Calculations

First Floor = 1,318 SF
Second Floor = 1,325 SF
Third Floor = 632 SF
Total Above Grade Living Area = 3,275
Lower Level Finished Area = 705 SF
Total Gross Living Area = 3,980 SF



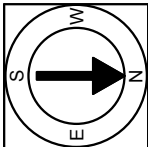
First Floor Plan
Ceiling Height = 9'-0"

36 Boylston Avenue
Providence, RI 02906



Scale 1/8" = 1'-0"

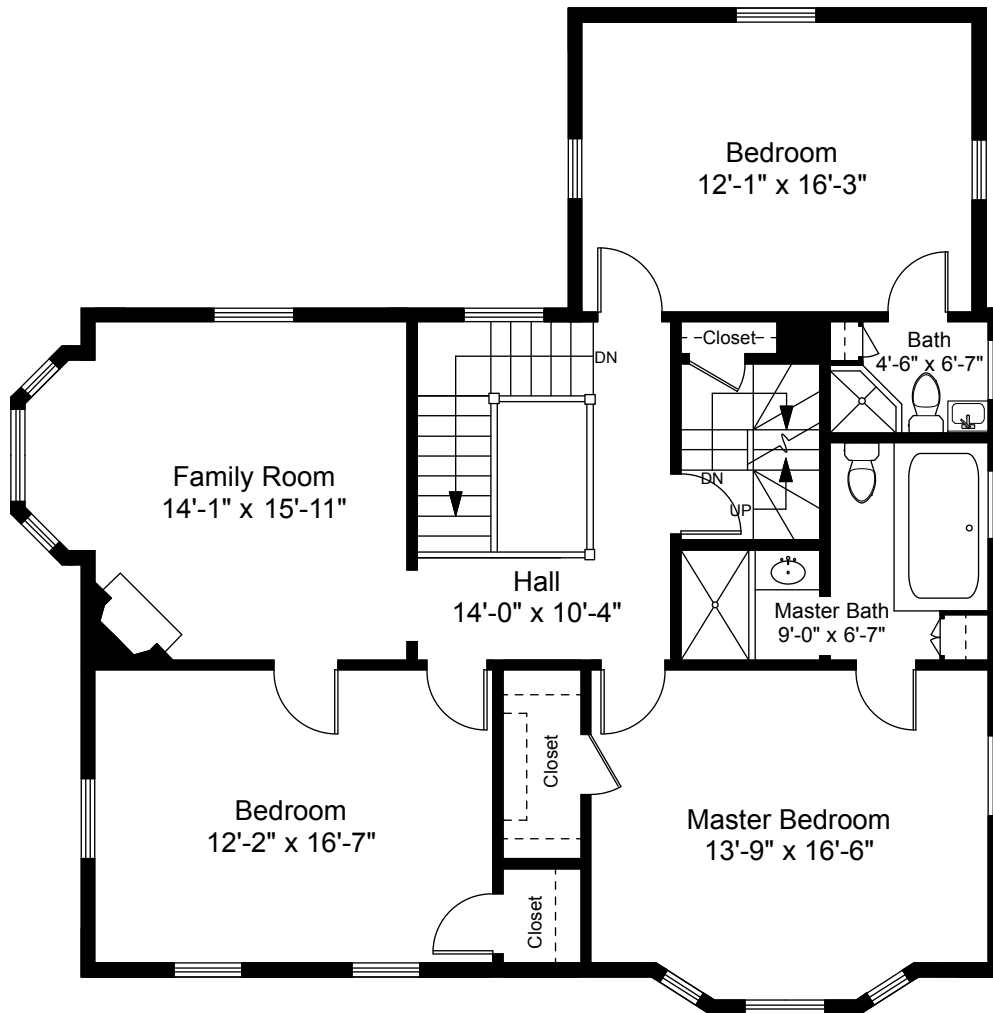
1



Completed: January 2014

Note: Dimensions are not guaranteed and are provided for informational purposes only.

NEW ENGLAND
FLOOR PLANS
& PHOTOGRAPHY
(800) 328-0217



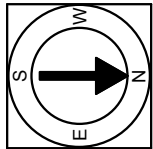
Second Floor Plan
 Ceiling Height = 8'-6"

36 Boylston Avenue
 Providence, RI 02906



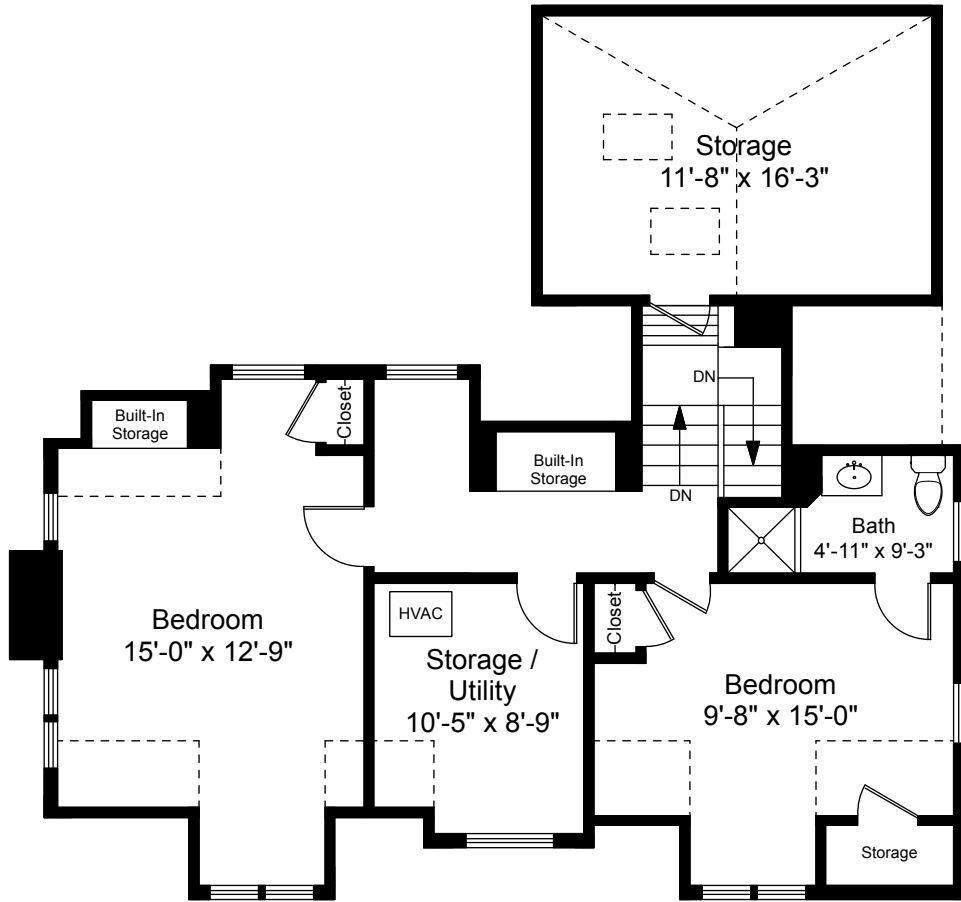
Scale 1/8" = 1'-0"

2



Completed: January 2014
 Note: Dimensions are not guaranteed and are provided for informational purposes only.


NEW ENGLAND
 FLOOR PLANS
 & PHOTOGRAPHY
 (800) 328-0217



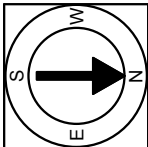
Third Floor Plan
 Ceiling Height = 7'-2"

36 Boylston Avenue
 Providence, RI 02906



Scale 1/8" = 1'-0"

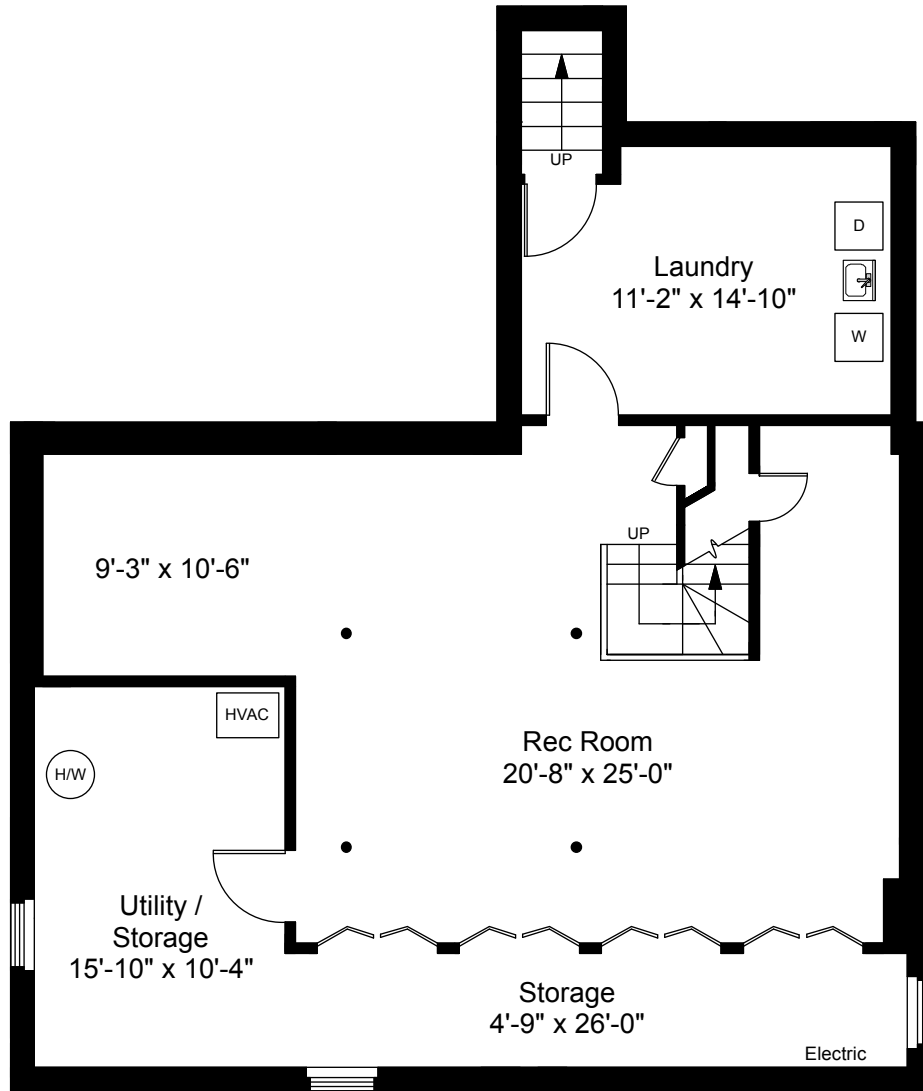
3



Completed: January 2014

Note: Dimensions are not guaranteed and are provided for informational purposes only.

NEW ENGLAND
 FLOOR PLANS
 & PHOTOGRAPHY
 (800) 328-0217



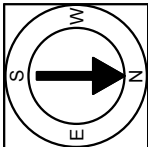
Lower Level Plan
 Ceiling Height = 7'-1"

36 Boylston Avenue
 Providence, RI 02906



Scale 1/8" = 1'-0"

4



Completed: January 2014

Note: Dimensions are not guaranteed and are provided for informational purposes only.

NEW ENGLAND
 FLOOR PLANS
 & PHOTOGRAPHY
 (800) 328-0217