

Square Footage Calculations

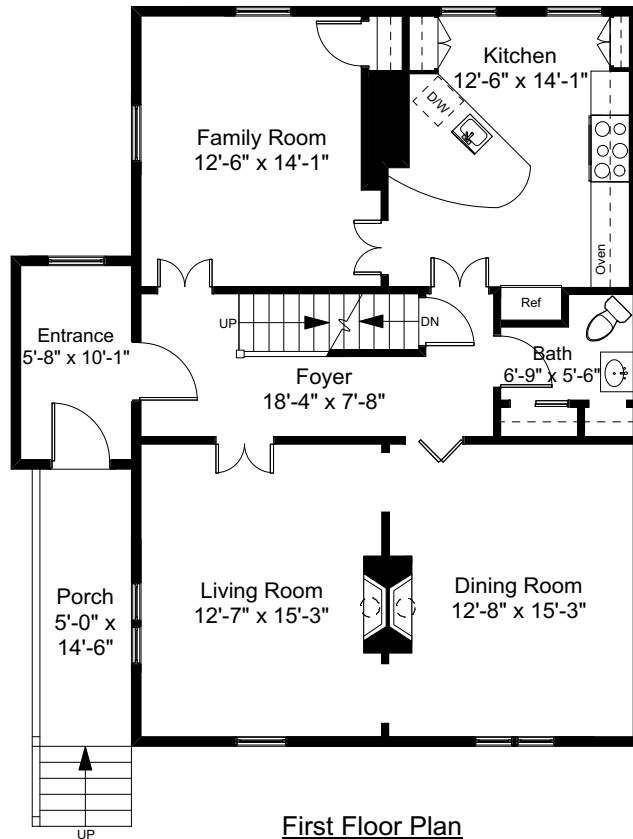
First Floor = 1,095 SF

Second Floor = 1,095 SF

Third Floor = 955 SF

Lower Level Finished Area = 594 SF

Total Gross Living Area = 3,739 SF



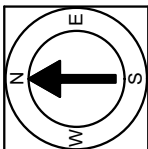
First Floor Plan
Ceiling Height = 9'-10"

49 Thayer Street
Providence, RI 02906



Scale 1" = 10'-0"

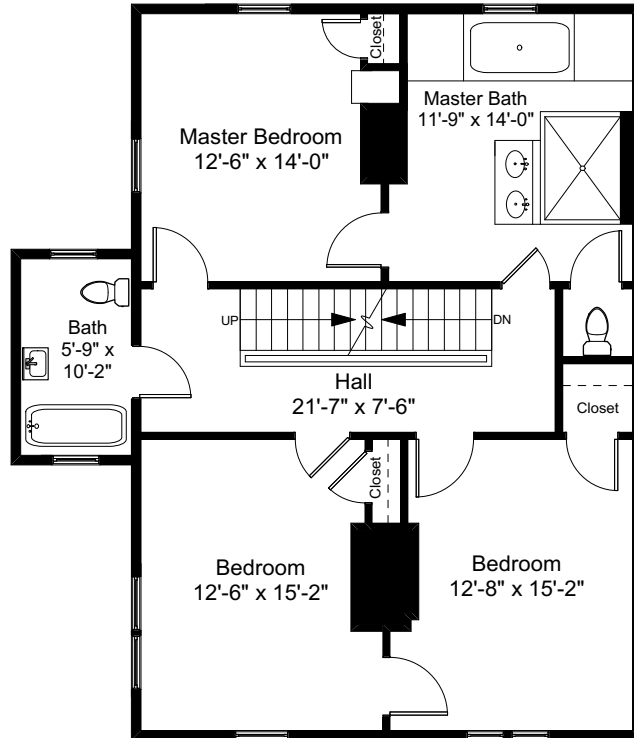
1



Completed: March 2019

Note: Dimensions are not guaranteed and are provided for informational purposes only. Individual room dimensions are not used to calculate overall square footage.

NATIONAL
—FLOOR PLANS—
& PHOTOGRAPHY
(800) 328-0217



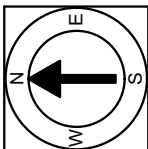
Second Floor Plan
Ceiling Height = 9'-10"

49 Thayer Street
Providence, RI 02906



Scale 1" = 10'-0"

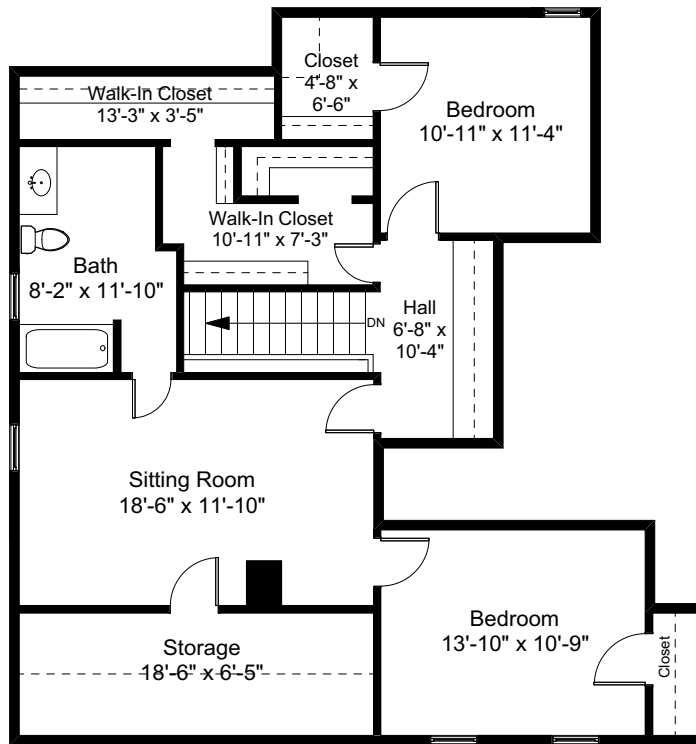
2



Completed: March 2019

Note: Dimensions are not guaranteed and are provided for informational purposes only. Individual room dimensions are not used to calculate overall square footage.

NATIONAL
—FLOOR PLANS—
& PHOTOGRAPHY
(800) 328-0217



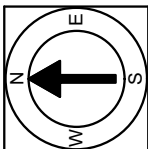
Third Floor Plan
Ceiling Height = 8'-6"

49 Thayer Street
Providence, RI 02906



Scale 1" = 10'-0"

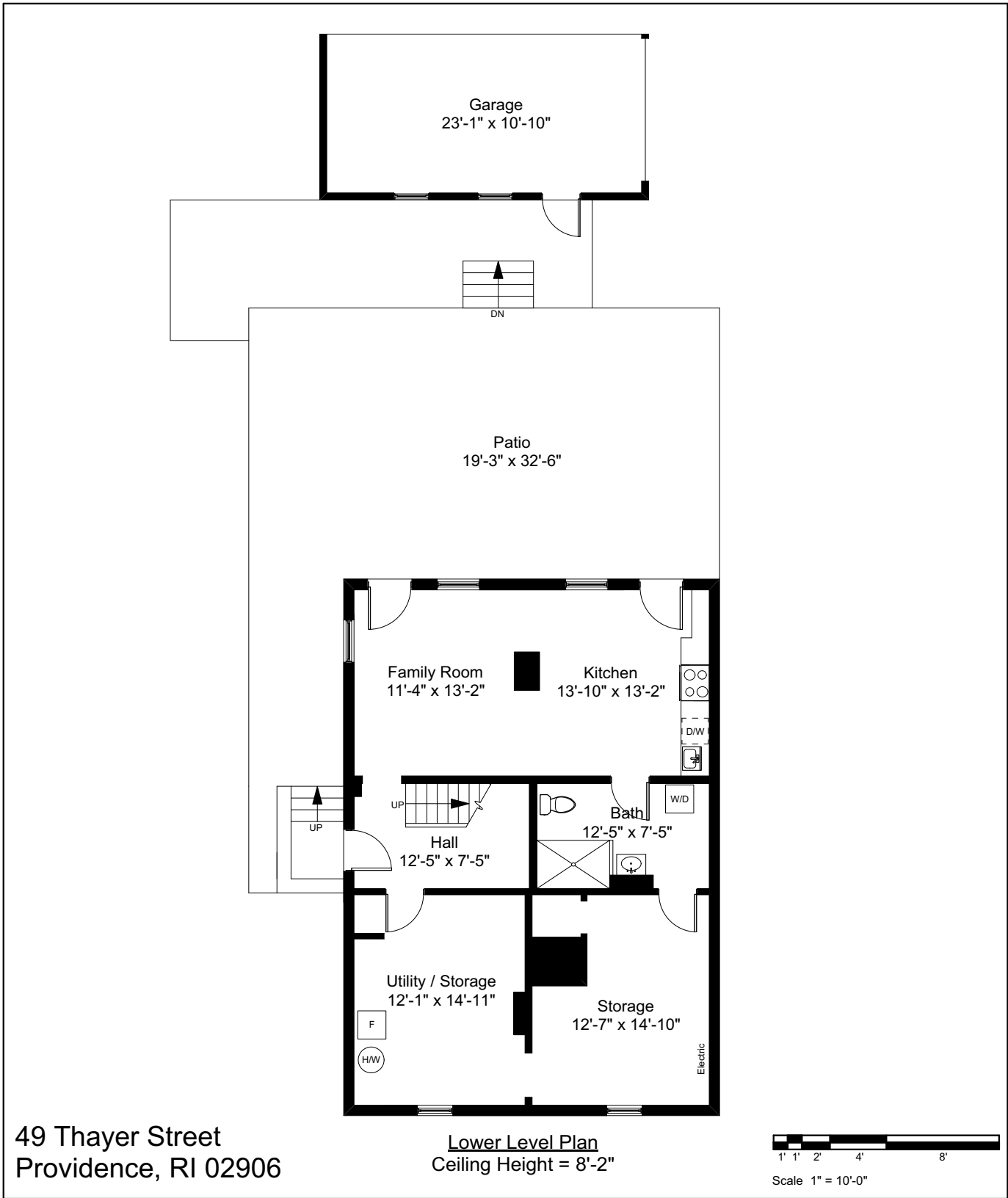
3



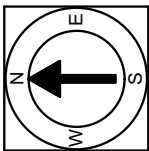
Completed: March 2019

Note: Dimensions are not guaranteed and are provided for informational purposes only. Individual room dimensions are not used to calculate overall square footage.

NATIONAL
—FLOOR PLANS—
& PHOTOGRAPHY
(800) 328-0217



4



Completed: March 2019
 Note: Dimensions are not guaranteed and are provided for informational purposes only. Individual room dimensions are not used to calculate overall square footage.

NATIONAL
 FLOOR PLANS
 & PHOTOGRAPHY
 (800) 328-0217