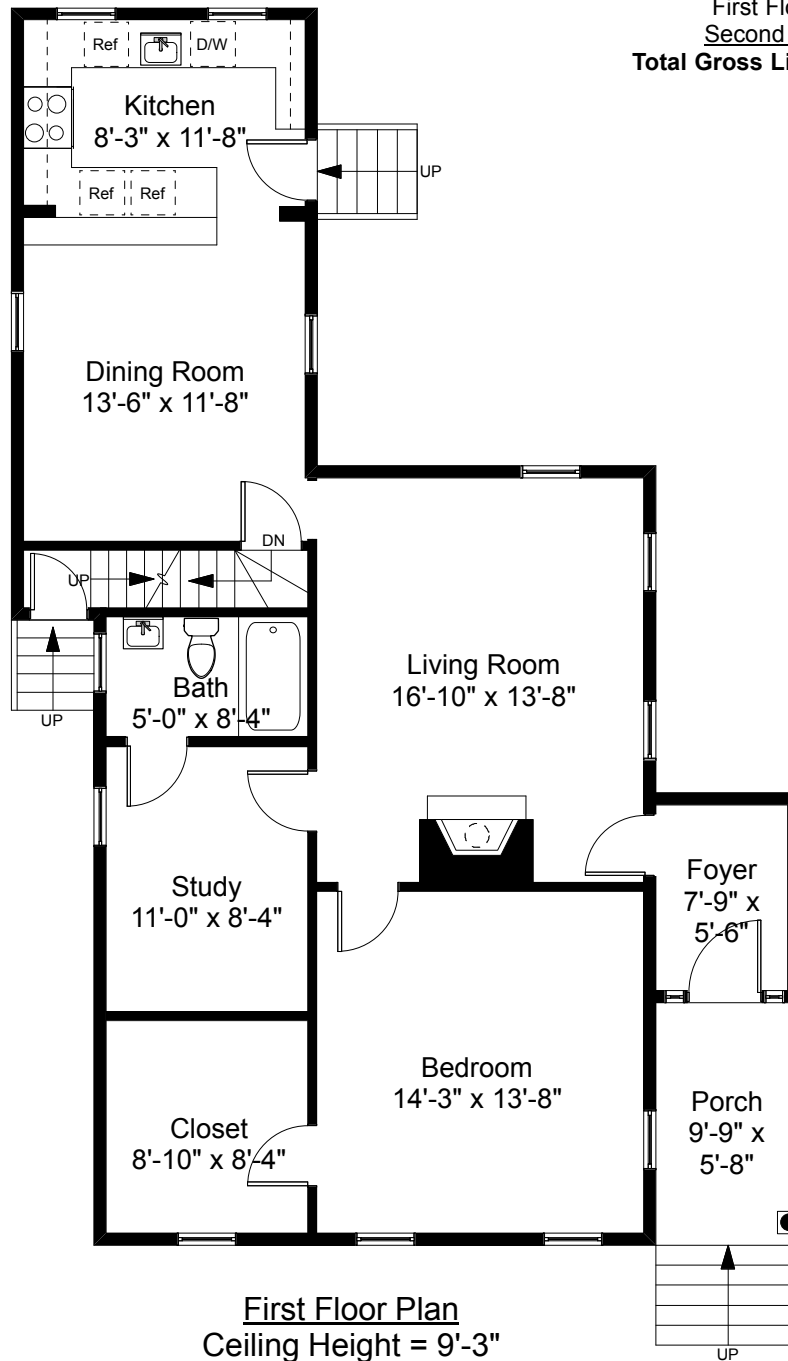


Square Footage Calculations
 First Floor = 1,077 SF
 Second Floor = 643 SF
Total Gross Living Area = 1,720 SF



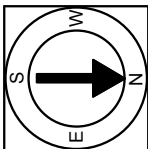
First Floor Plan
 Ceiling Height = 9'-3"

68 Governor Street
 Providence, RI 02906



Scale 1/8" = 1'-0"

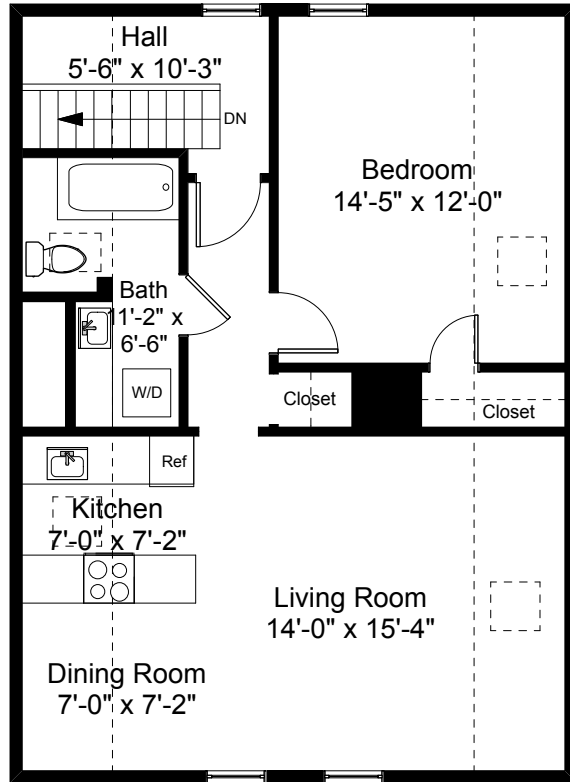
1



Completed: April 2019

Note: Dimensions are not guaranteed and are provided for informational purposes only. Individual room dimensions are not used to calculate overall square footage.

NATIONAL
 FLOOR PLANS
 & PHOTOGRAPHY
 (800) 328-0217



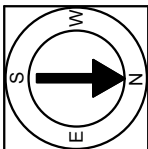
Second Floor Plan
Ceiling Height = 7'-2"

68 Governor Street
Providence, RI 02906



Scale 1/8" = 1'-0"

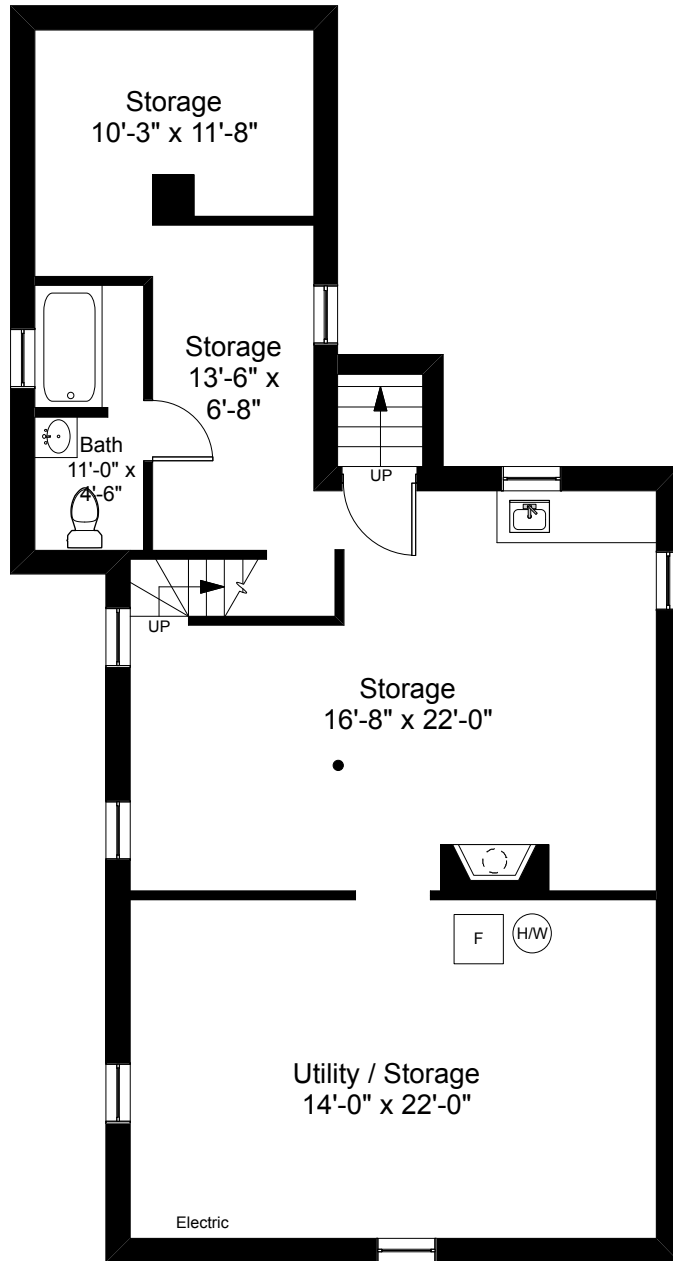
2



Completed: April 2019

Note: Dimensions are not guaranteed and are provided for informational purposes only. Individual room dimensions are not used to calculate overall square footage.


NATIONAL
—FLOOR PLANS—
& PHOTOGRAPHY
(800) 328-0217



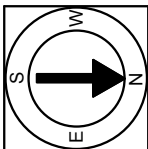
Basement Plan
Ceiling Height = 6'-10"

68 Governor Street
Providence, RI 02906



Scale 1/8" = 1'-0"

3



Completed: April 2019

Note: Dimensions are not guaranteed and are provided for informational purposes only. Individual room dimensions are not used to calculate overall square footage.

NATIONAL
—FLOOR PLANS—
& PHOTOGRAPHY
(800) 328-0217