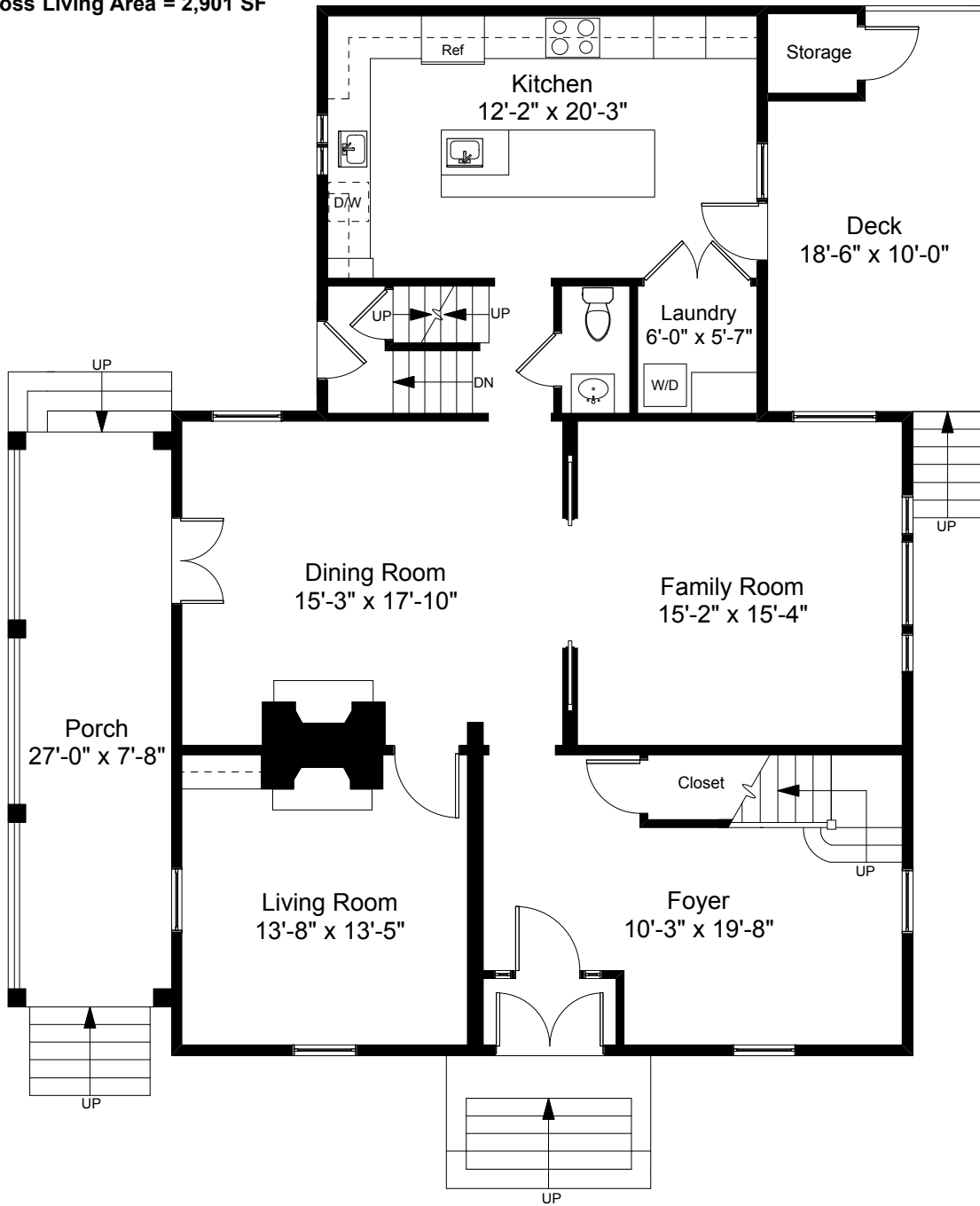


Square Footage Calculations

First Floor = 1,458 SF

Second Floor = 1,443 SF

Total Gross Living Area = 2,901 SF



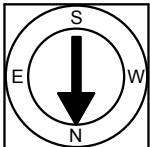
315 Olney Street
Providence, RI 02906

First Floor Plan
Ceiling Height = 8'-11"



Scale 1/8" = 1'-0"

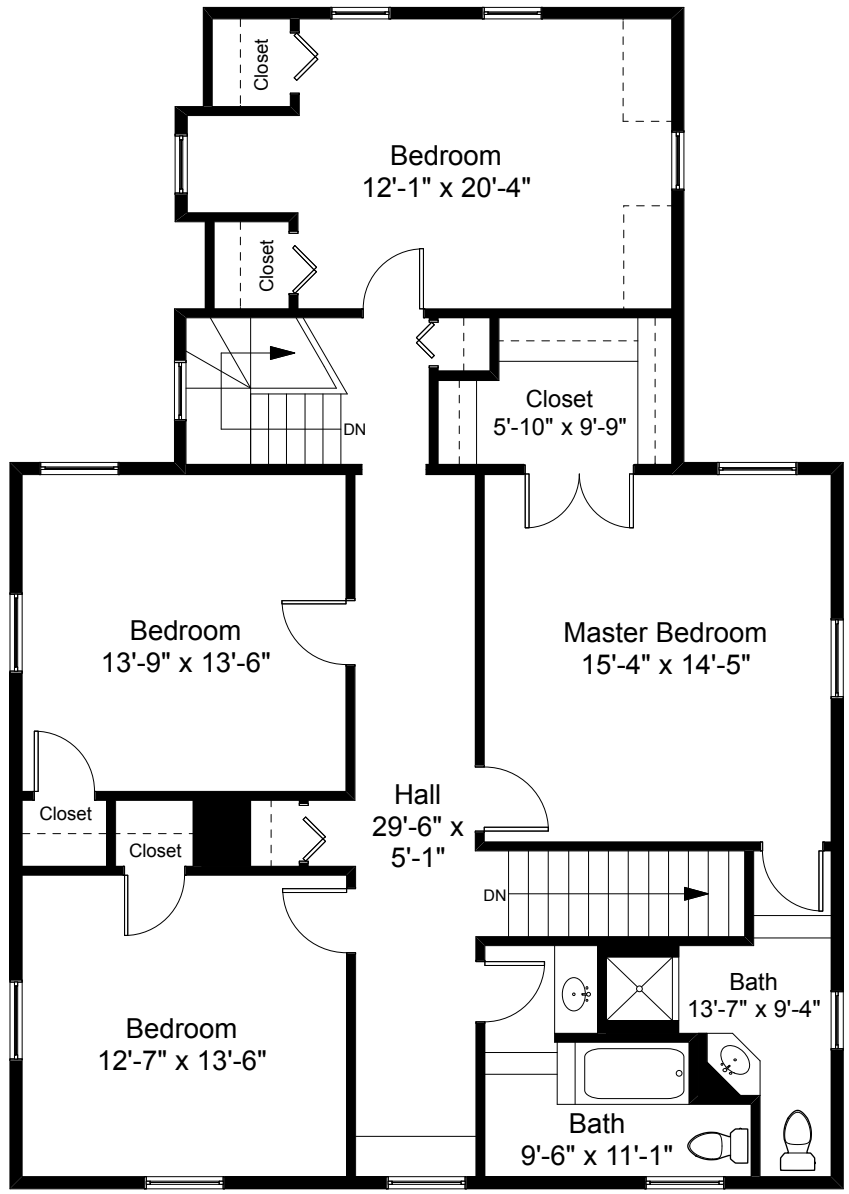
1



Completed: April 2019

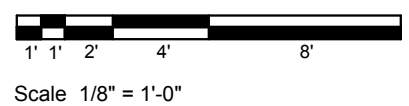
Note: Dimensions are not guaranteed and are provided for informational purposes only. Individual room dimensions are not used to calculate overall square footage.

NATIONAL
—FLOOR PLANS—
& PHOTOGRAPHY
(800) 328-0217

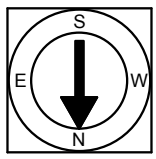


Second Floor Plan
Ceiling Height = 8'-5"

315 Olney Street
Providence, RI 02906

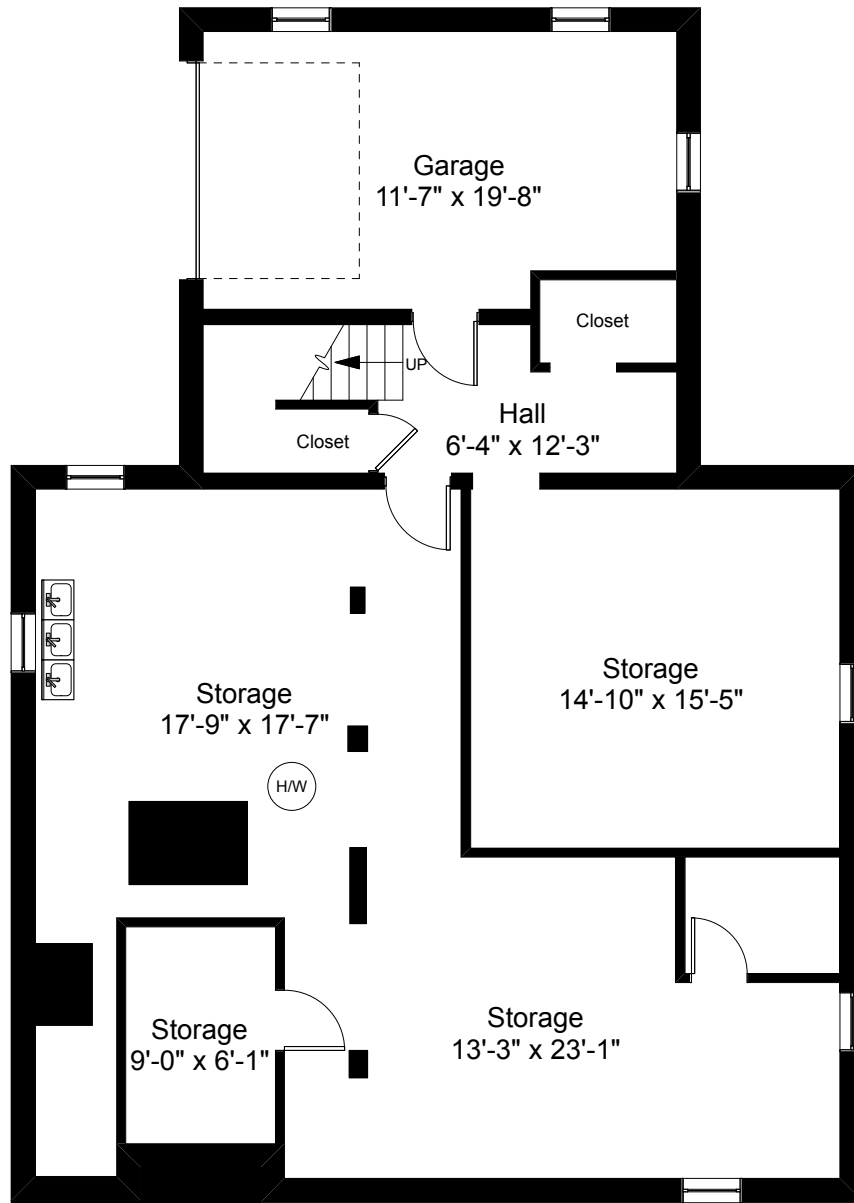


2



Completed: April 2019
Note: Dimensions are not guaranteed and are provided for informational purposes only. Individual room dimensions are not used to calculate overall square footage.





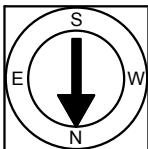
Basement Plan
 Ceiling Height = 7'-7"

315 Olney Street
 Providence, RI 02906



Scale 1/8" = 1'-0"

3



Completed: April 2019

Note: Dimensions are not guaranteed and are provided for informational purposes only. Individual room dimensions are not used to calculate overall square footage.

NATIONAL
 FLOOR PLANS
 & PHOTOGRAPHY
 (800) 328-0217