

Square Footage Calculations

First Floor = 2,121 SF

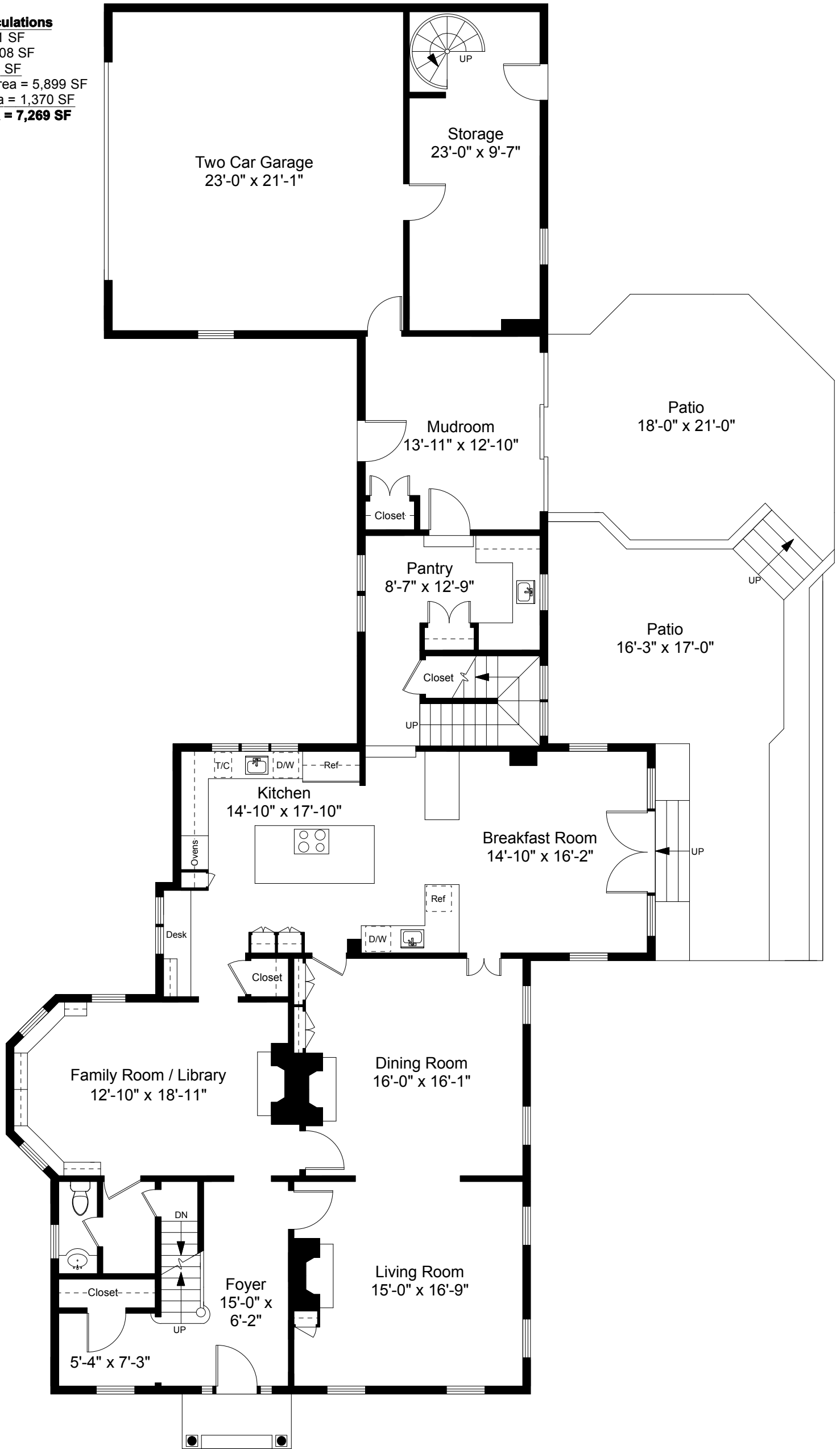
Second Floor = 2,908 SF

Third Floor = 870 SF

Total Above Grade Living Area = 5,899 SF

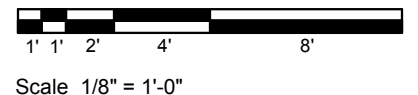
Lower Level Finished Area = 1,370 SF

Total Gross Living Area = 7,269 SF

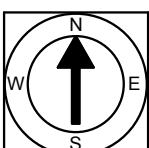


104 Bowen Street
Providence, RI 02906

First Floor Plan
Ceiling Height = 9'-0"



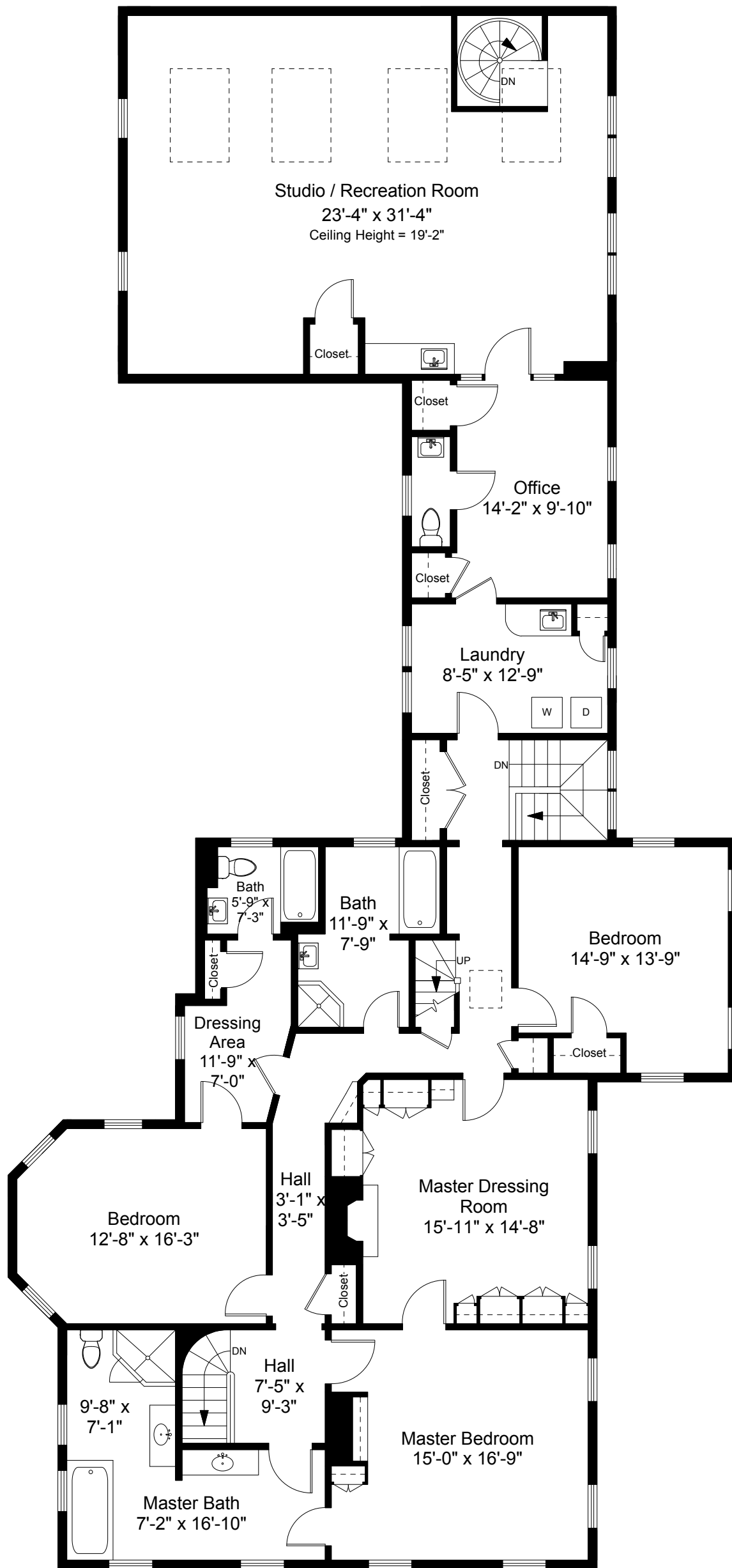
1



Note: Dimensions are not guaranteed and are provided for informational purposes only.

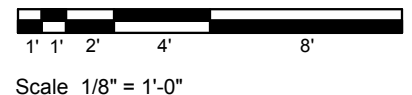
NATIONAL
FLOOR PLANS
& PHOTOGRAPHY
(800) 328-0217

Completed: March 2016

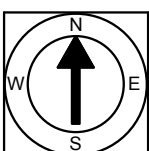


Second Floor Plan
Ceiling Height = 8'-6"

104 Bowen Street
Providence, RI 02906



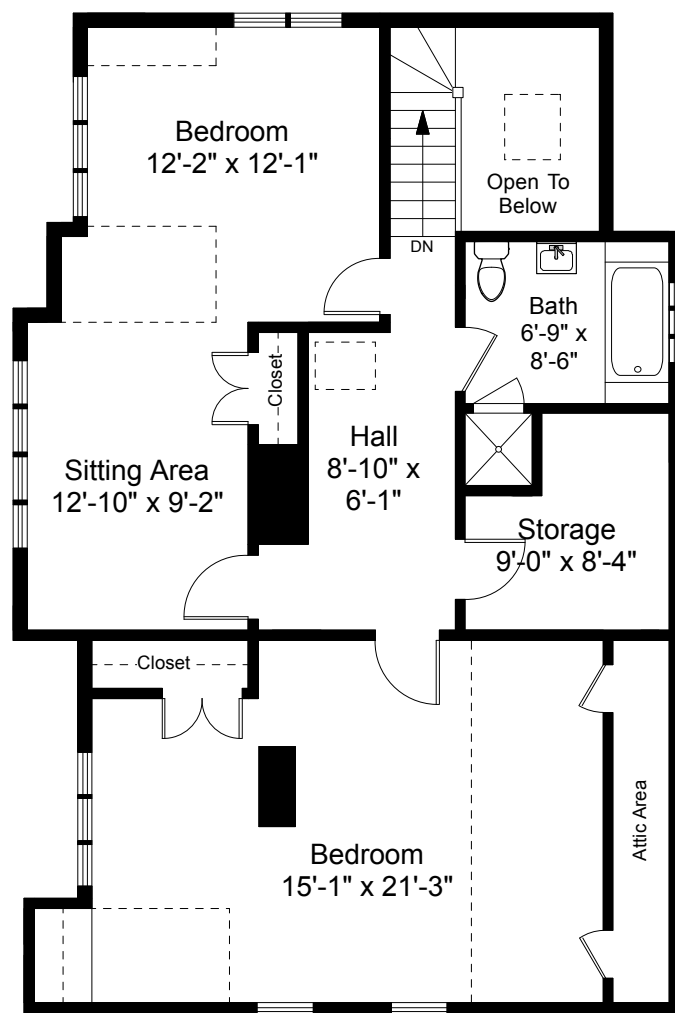
2



Note: Dimensions are not guaranteed and are provided for informational purposes only.

NATIONAL
FLOOR PLANS
& PHOTOGRAPHY
(800) 328-0217

Completed: March 2016



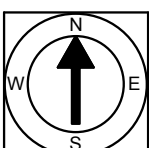
Third Floor Plan
Ceiling Height = 8'-4"

104 Bowen Street
Providence, RI 02906



Scale 1/8" = 1'-0"

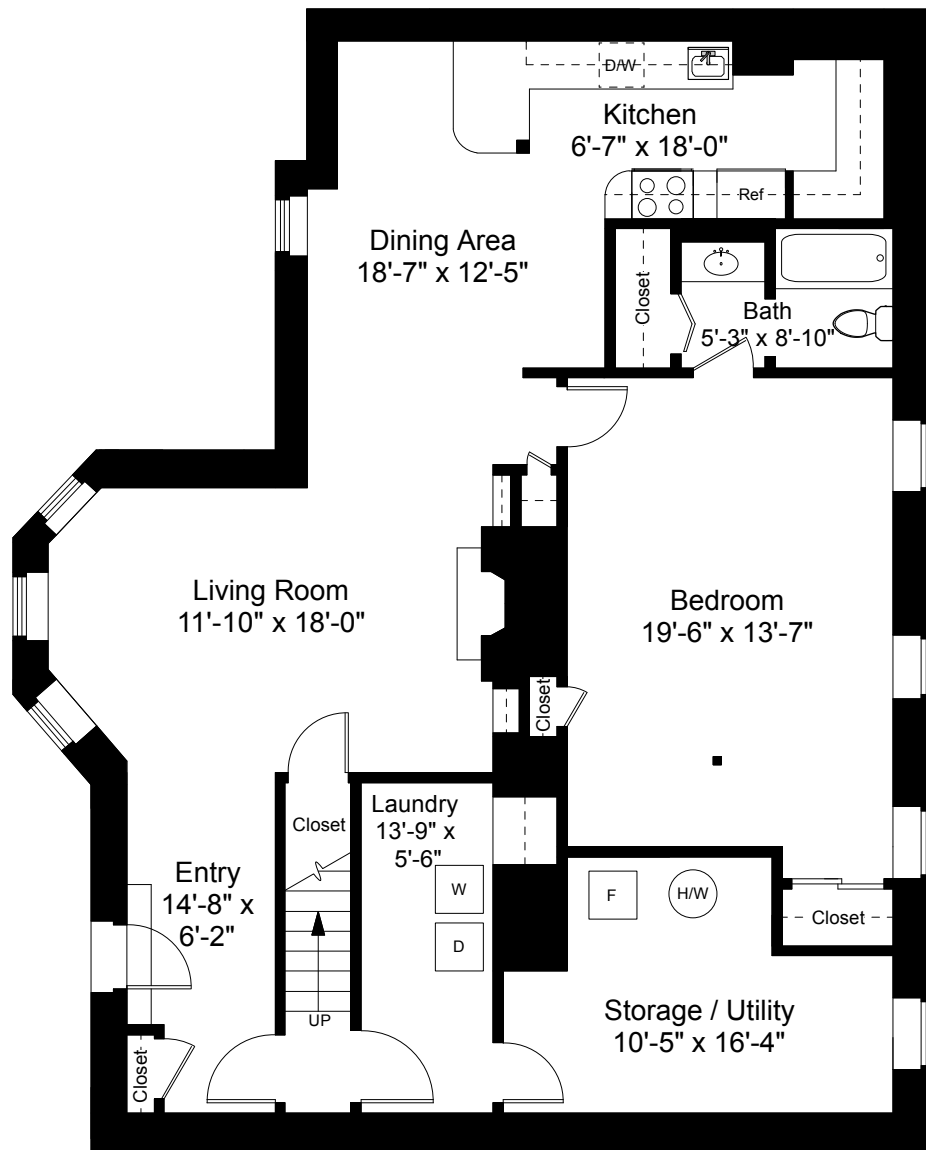
3



Note: Dimensions are not guaranteed and are provided for informational purposes only.

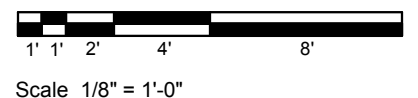
NATIONAL
FLOOR PLANS
& PHOTOGRAPHY
(800) 328-0217

Completed: March 2016

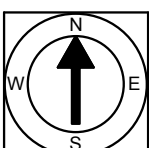


Lower Level Plan
Ceiling Height = 7'-0"

104 Bowen Street
Providence, RI 02906



4



Note: Dimensions are not guaranteed and are provided for informational purposes only.

NATIONAL
FLOOR PLANS
& PHOTOGRAPHY
(800) 328-0217

Completed: March 2016