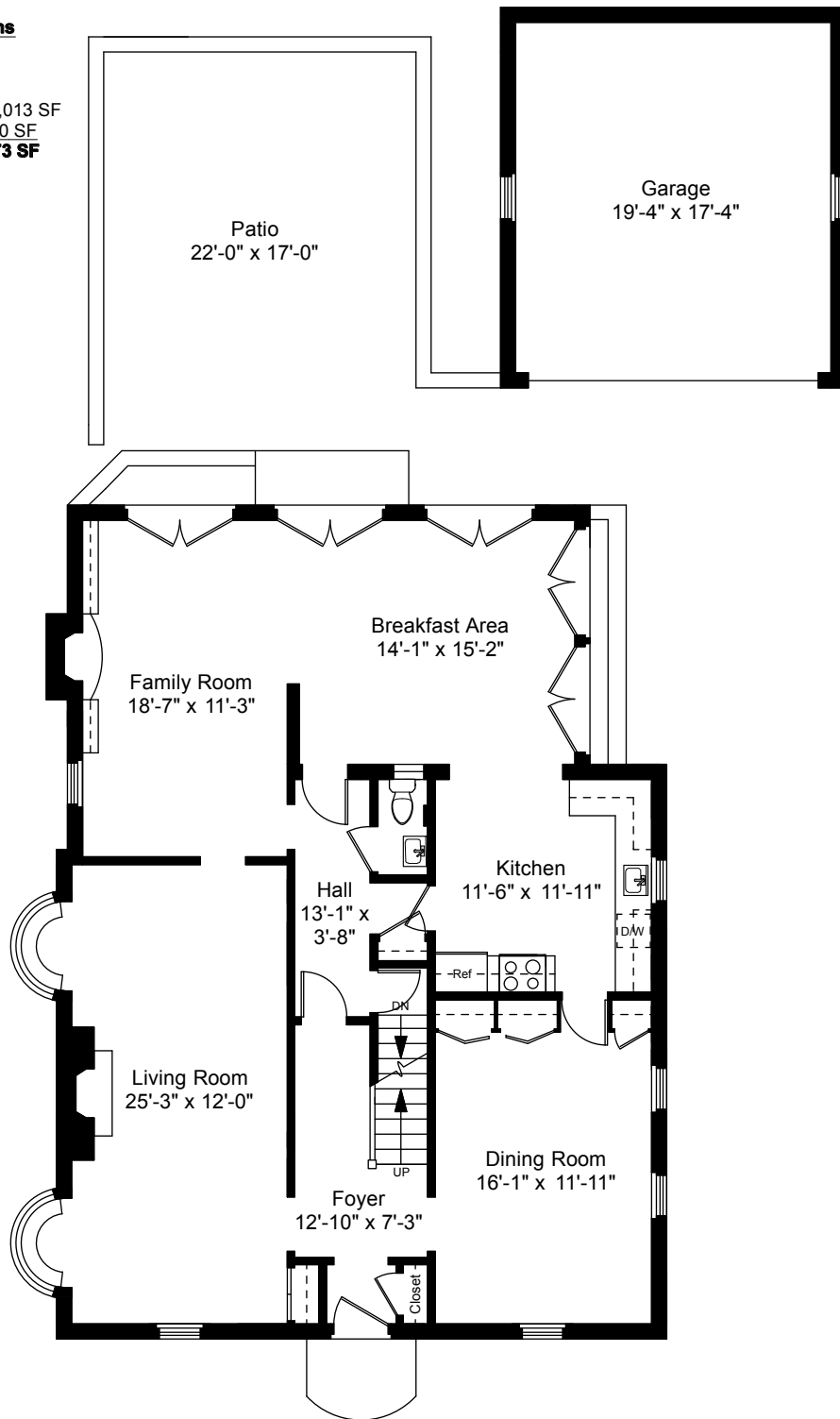


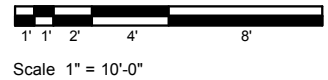
**Square Footage Calculations**

First Floor = 1,477 SF  
Second Floor = 1,041 SF  
Third Floor = 495 SF  
Total Above Grade Living Area = 3,013 SF  
Lower Level Finished Area = 460 SF  
**Total Gross Living Area = 3,473 SF**

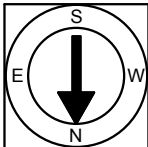


11 Gorton Street  
Providence, RI 02906

First Floor Plan  
Ceiling Height = 8'-4"



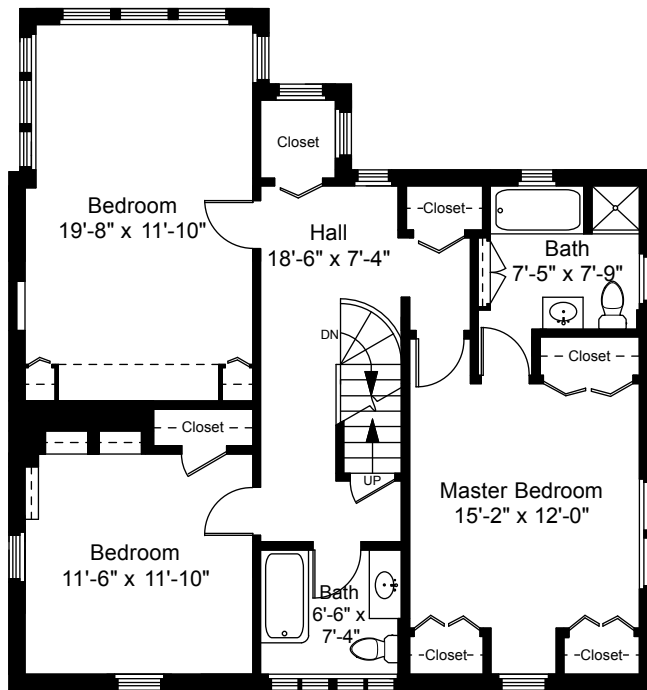
1



Completed: November 2014

Note: Dimensions are not guaranteed and are provided for informational purposes only.

**NEW ENGLAND**  
— FLOOR PLANS —  
& PHOTOGRAPHY  
(800) 328-0217



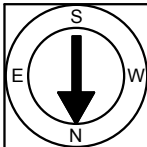
Second Floor Plan  
Ceiling Height = 8'-2"

11 Gorton Street  
Providence, RI 02906



Scale 1" = 10'-0"

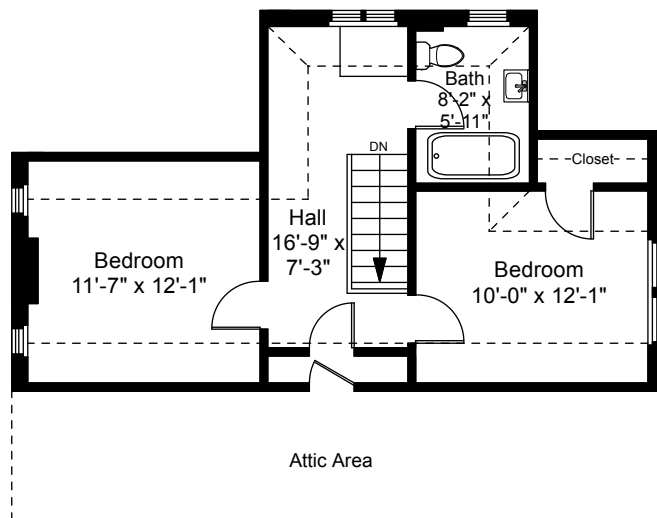
2



Completed: November 2014

Note: Dimensions are not guaranteed and are provided for informational purposes only.

NEW ENGLAND  
—FLOOR PLANS—  
& PHOTOGRAPHY  
(800) 328-0217



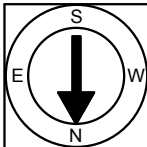
Third Floor Plan  
Ceiling Height = 7'-0"

11 Gorton Street  
Providence, RI 02906



Scale 1" = 10'-0"

3

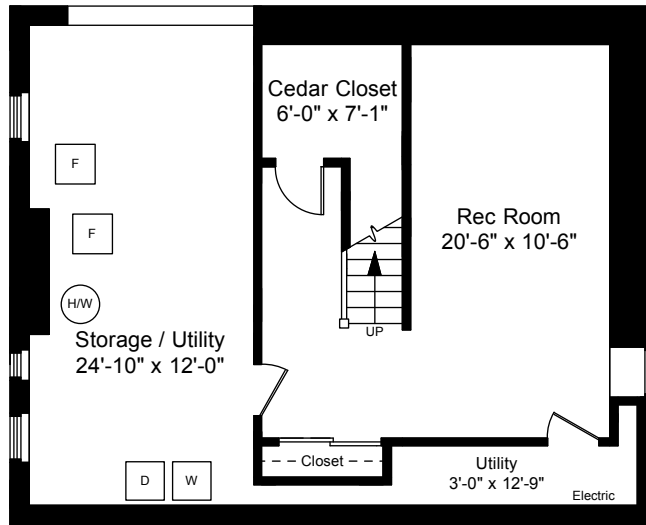


Completed: November 2014

Note: Dimensions are not guaranteed and are provided for informational purposes only.

  
NEW ENGLAND  
— FLOOR PLANS —  
& PHOTOGRAPHY  
(800) 328-0217

Crawl Space



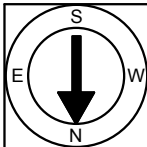
Lower Level Plan  
Ceiling Height = 6'-10"

11 Gorton Street  
Providence, RI 02906



Scale 1" = 10'-0"

4



Completed: November 2014

Note: Dimensions are not guaranteed and are provided for informational purposes only.

  
NEW ENGLAND  
—FLOOR PLANS—  
& PHOTOGRAPHY  
(800) 328-0217