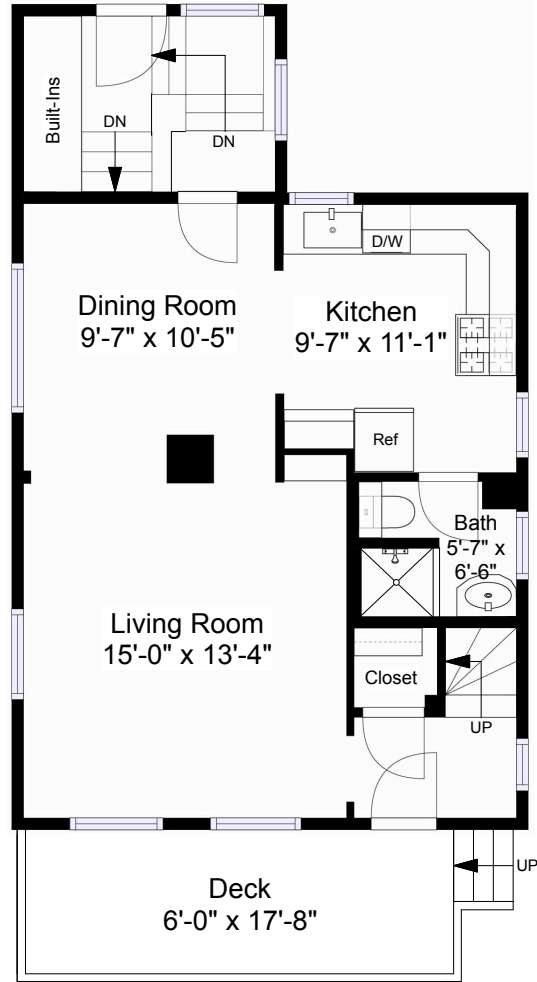
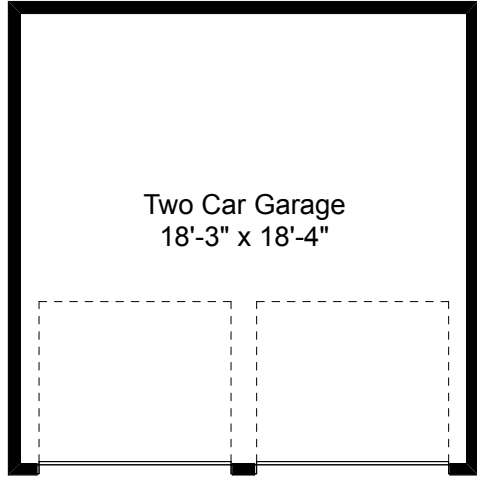


Square Footage Calculations

First Floor = 663 SF

Second Floor = 567 SF

Total Gross Living Area = 1,230 SF



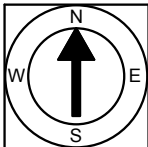
First Floor Plan
Ceiling Height = 7'-6"



Scale 1/8" = 1'-0"

20 Lincoln Avenue
Providence, RI 02906

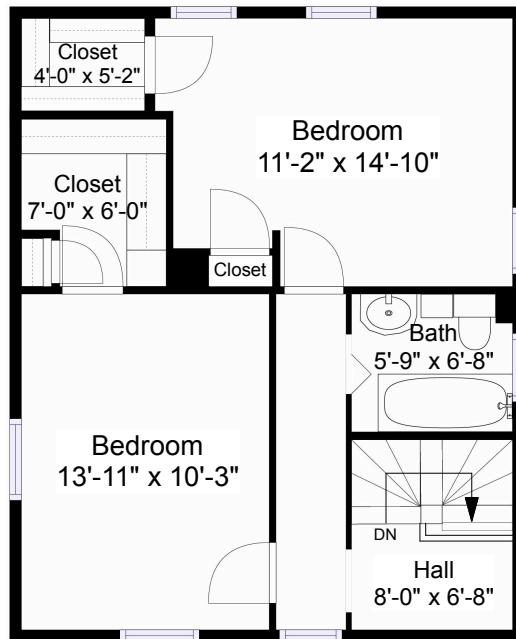
1



Completed: August 2019

Note: Dimensions are not guaranteed and are provided for informational purposes only. Individual room dimensions are not used to calculate overall square footage.

NATIONAL
FLOOR PLANS
& PHOTOGRAPHY
(800) 328-0217



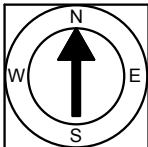
Second Floor Plan
Ceiling Height = 7'-8"

20 Lincoln Avenue
Providence, RI 02906



Scale 1/8" = 1'-0"

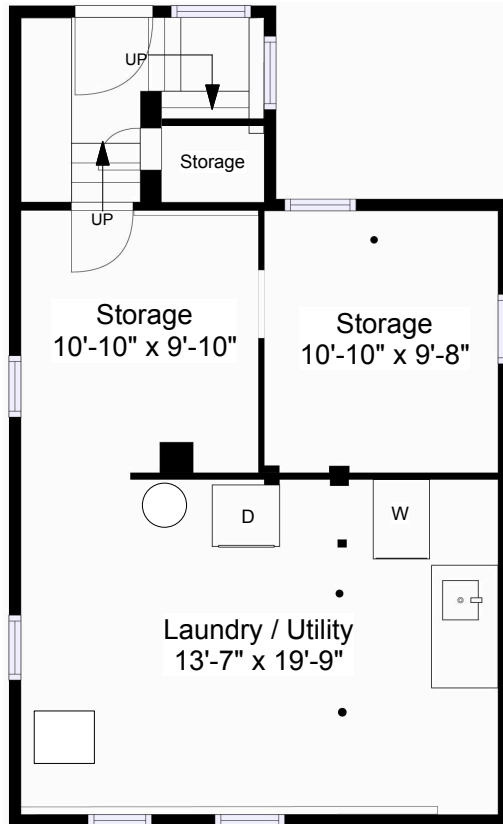
2



Completed: August 2019

Note: Dimensions are not guaranteed and are provided for informational purposes only. Individual room dimensions are not used to calculate overall square footage.

NATIONAL
FLOOR PLANS
& PHOTOGRAPHY
(800) 328-0217



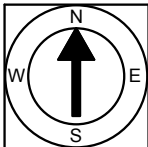
Basement Plan
Ceiling Height = 6'-0"

20 Lincoln Avenue
Providence, RI 02906



Scale 1/8" = 1'-0"

3



Completed: August 2019

Note: Dimensions are not guaranteed and are provided for informational purposes only. Individual room dimensions are not used to calculate overall square footage.

NATIONAL
FLOOR PLANS
& PHOTOGRAPHY
(800) 328-0217