

Square Footage Calculations

First Floor = 1,524 SF

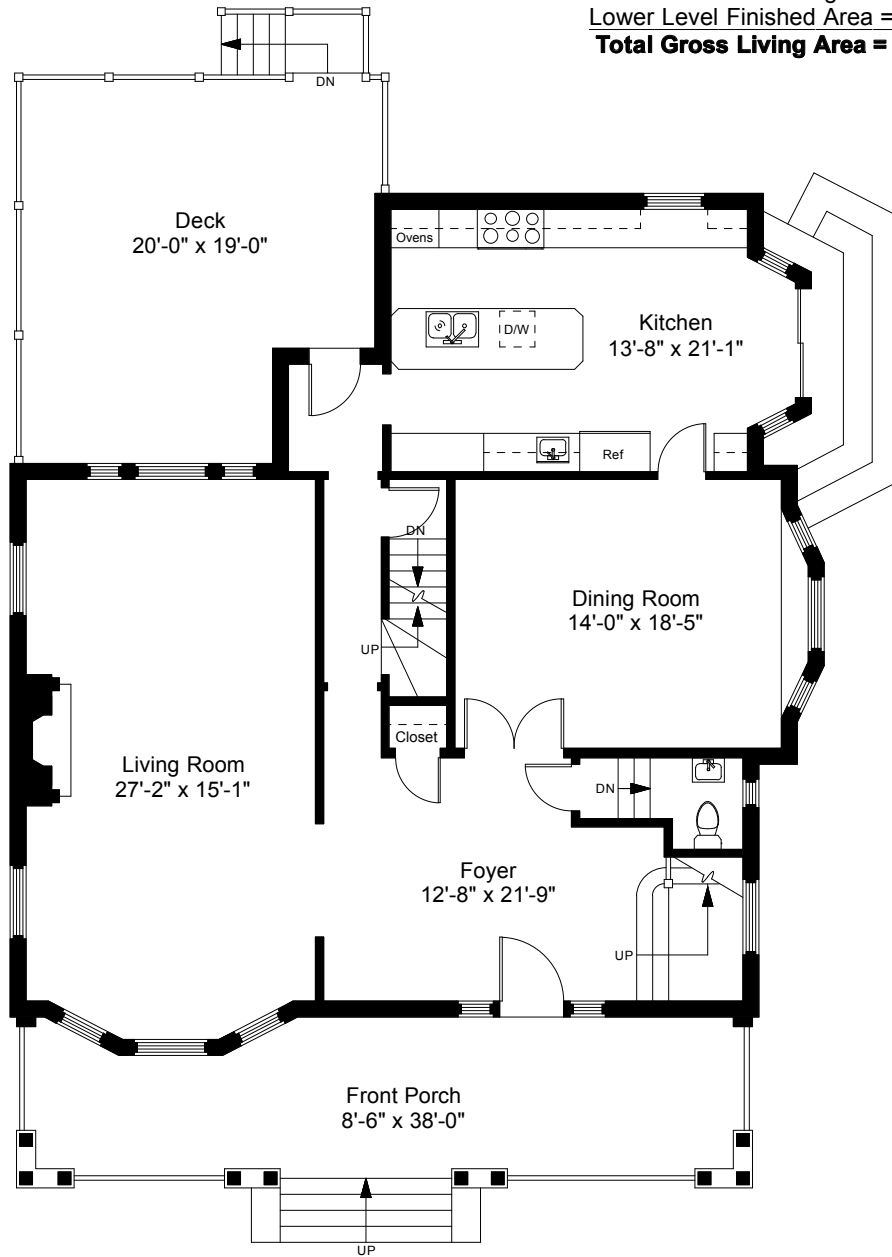
Second Floor = 1,271 SF

Third Floor = 719 SF

Total Above Grade Living Area = 3,514 SF

Lower Level Finished Area = 1,183 SF

Total Gross Living Area = 4,697 SF



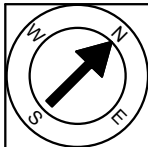
First Floor Plan
Ceiling Height = 8'-8"

288 Freeman Parkway
Providence, RI 02906



Scale 1" = 10'-0"

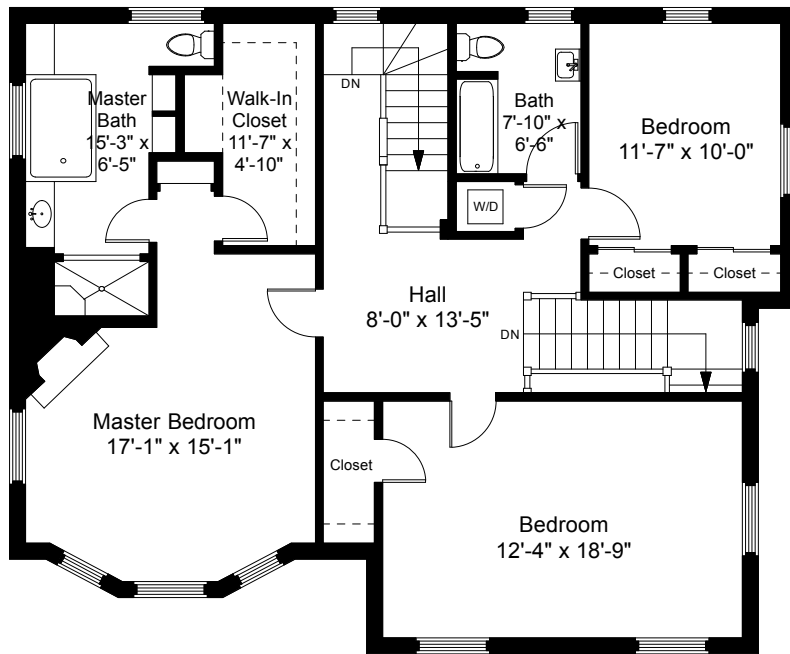
1



Completed: August 2016

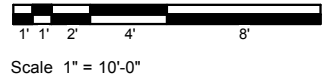
Note: Dimensions are not guaranteed and are provided for informational purposes only. Individual room dimensions are not used to calculate overall square footage.



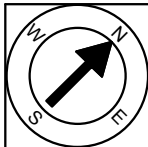


Second Floor Plan
Ceiling Height = 8'-0"

288 Freeman Parkway
Providence, RI 02906



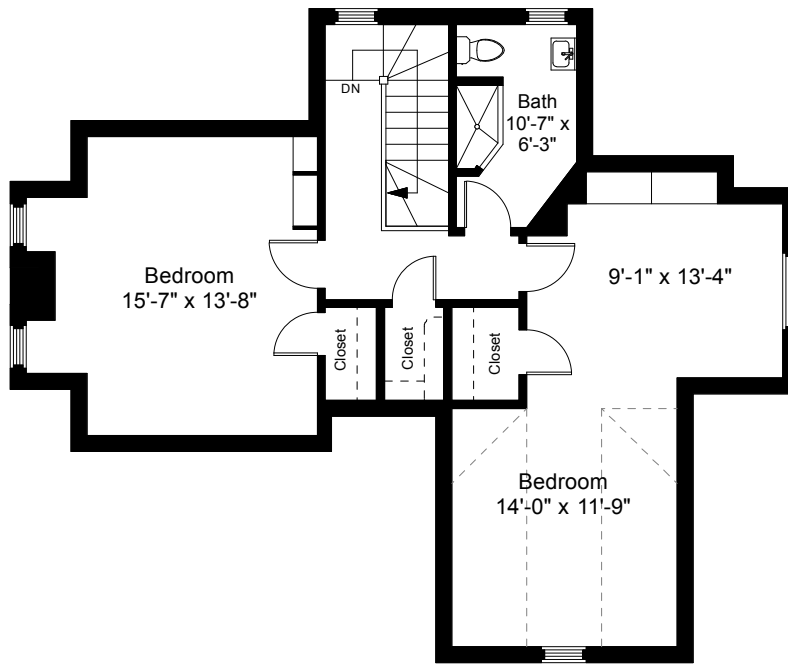
2



Completed: August 2016

Note: Dimensions are not guaranteed and are provided for informational purposes only. Individual room dimensions are not used to calculate overall square footage.

NATIONAL
—FLOOR PLANS—
& PHOTOGRAPHY
(800) 328-0217



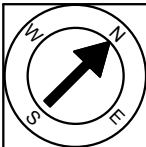
Third Floor Plan
 Ceiling Height = 6'-11"

288 Freeman Parkway
 Providence, RI 02906



Scale 1" = 10'-0"

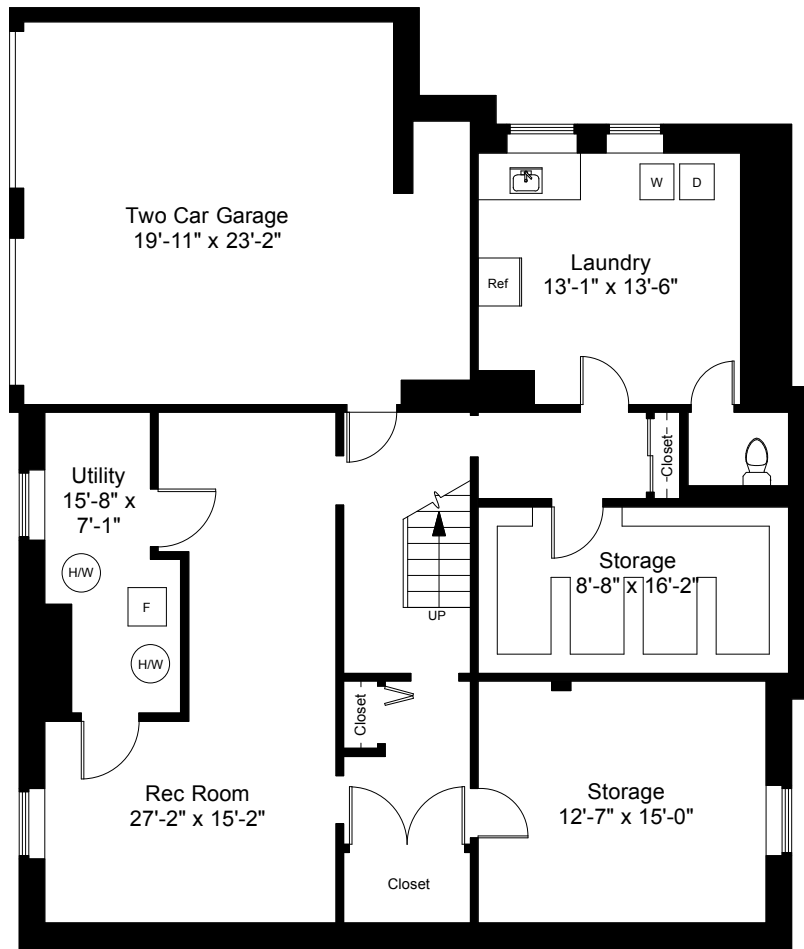
3



Completed: August 2016

Note: Dimensions are not guaranteed and are provided for informational purposes only. Individual room dimensions are not used to calculate overall square footage.

NATIONAL
 FLOOR PLANS
 & PHOTOGRAPHY
 (800) 328-0217



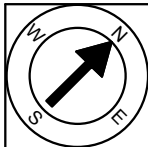
Lower Level Plan
 Ceiling Height = 7'-7"

288 Freeman Parkway
 Providence, RI 02906



Scale 1" = 10'-0"

4



Completed: August 2016

Note: Dimensions are not guaranteed and are provided for informational purposes only. Individual room dimensions are not used to calculate overall square footage.

NATIONAL
 FLOOR PLANS
 & PHOTOGRAPHY
 (800) 328-0217