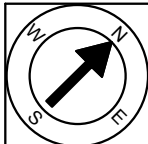


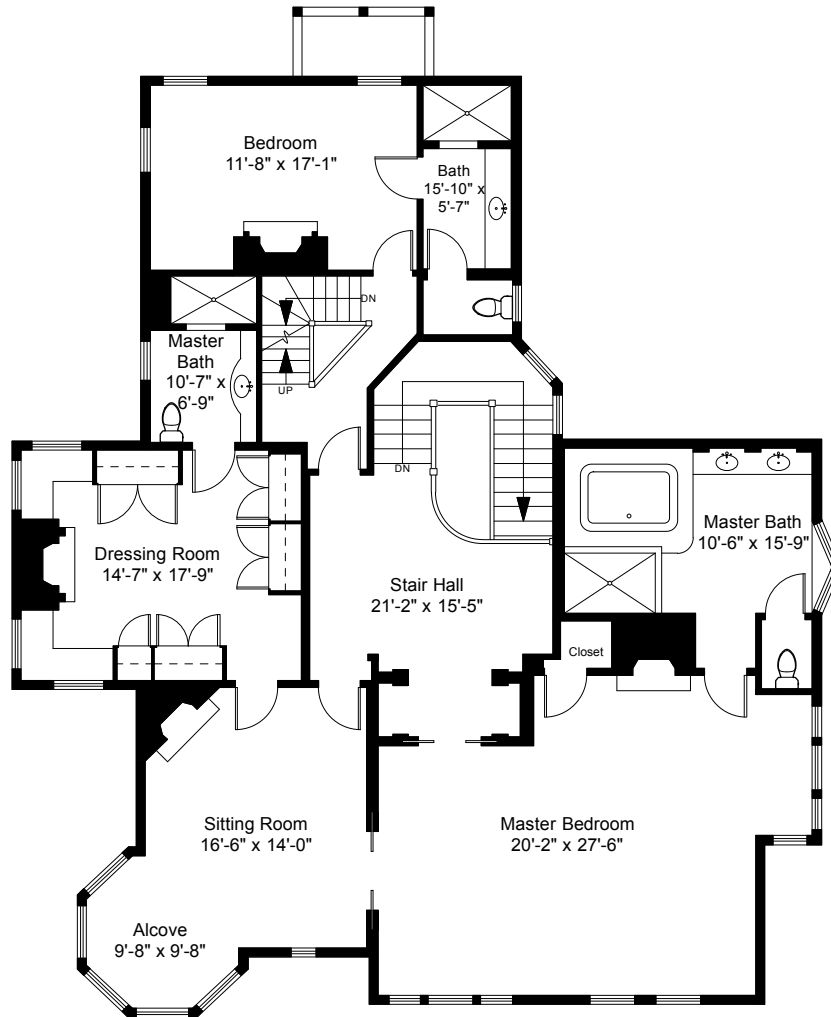
1



Completed: August 2016

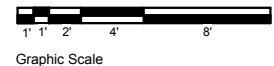
Note: Dimensions are not guaranteed and are provided for informational purposes only. Individual room dimensions are not used to calculate overall square footage.

**NATIONAL**  
FLOOR PLANS  
& PHOTOGRAPHY  
(800) 328-0217

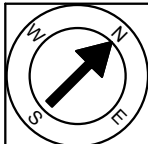


Second Floor Plan  
Ceiling Height = 9'-0"

24 Stimson Avenue  
Providence, RI 02906



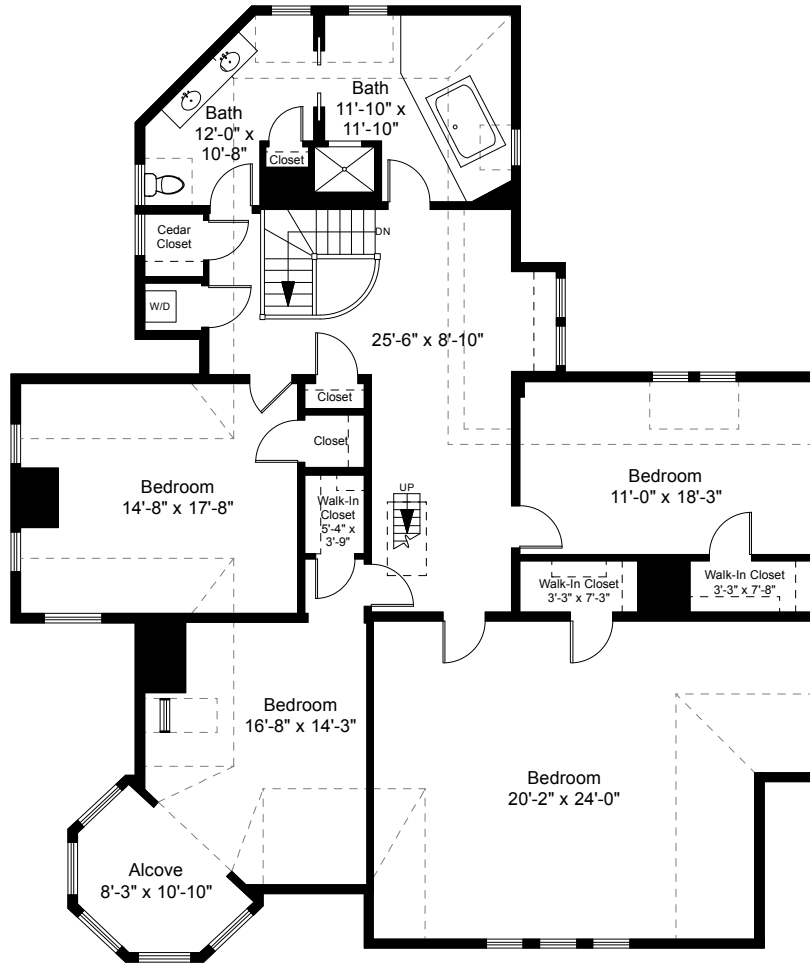
2



Completed: August 2016

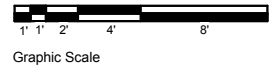
Note: Dimensions are not guaranteed and are provided for informational purposes only. Individual room dimensions are not used to calculate overall square footage.

**NATIONAL**  
FLOOR PLANS  
& PHOTOGRAPHY  
(800) 328-0217

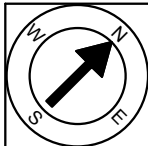


Third Floor Plan  
Ceiling Height = 9'-0"

24 Stimson Avenue  
Providence, RI 02906



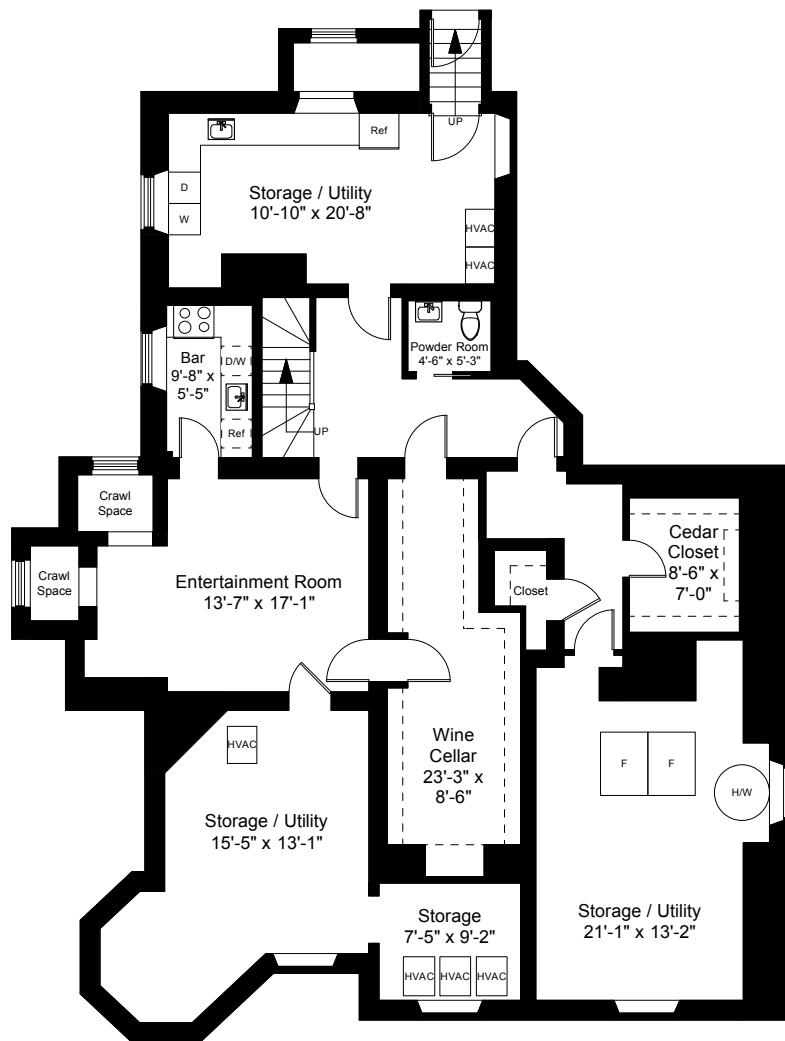
3



Completed: August 2016

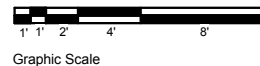
Note: Dimensions are not guaranteed and are provided for informational purposes only. Individual room dimensions are not used to calculate overall square footage.

**NATIONAL**  
FLOOR PLANS  
& PHOTOGRAPHY  
(800) 328-0217

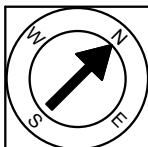


Lower Level Plan  
Ceiling Height = 7'-8"

24 Stimson Avenue  
Providence, RI 02906



4



Completed: August 2016

Note: Dimensions are not guaranteed and are provided for informational purposes only. Individual room dimensions are not used to calculate overall square footage.

NATIONAL  
FLOOR PLANS  
& PHOTOGRAPHY  
(800) 328-0217